



---

# NOCTURNO

D E S I G N B L O G

ÚNICAMENTE PARA USO PERSONAL  
CAMISA OXFORD



ESTE MOLDE NO ES PARA USO COMERCIAL.  
SI DESEAS UTILIZAR ESTE MOLDE PARA TU MARCA, PUEDES  
COMPRAR UNA LICENCIA COMERCIAL EN LA TIENDA ONLINE.  
ESTE MOLDE ES PROPIEDAD DE NOCTURNO DESIGN BLOG  
Y ESTÁ PROHIBIDA SU VENTA Y REPRODUCCIÓN.  
CONSULTA LOS TÉRMINOS Y CONDICIONES EN EL SIGUIENTE LINK:  
[HTTPS://NOCTURNODESIGNBLOG.COM/TERMINOS-Y-CONDICIONES/](https://nocturnodesignblog.com/terminos-y-condiciones/)

VERSIÓN 3.0 AGOSTO 2020



# NOCTURNO DESIGN BLOG

## MOLDE CAMISA OXFORD

Camisa amplia silueta recta

### CÓMO ARMAR EL MOLDE:

1. Imprime las hojas en tamaño carta, A4 o legal con el formato de impresión tamaño real.
2. Reorta por la línea punteada.
3. Pega las hojas según el diagrama.
4. Utiliza la guía de color para recortar la talla que quieras.

Puedes ver más indicaciones de cómo imprimir y armar los moldes en el siguiente link:

<https://www.youtube.com/watch?v=jkp7BbnbBZ8>

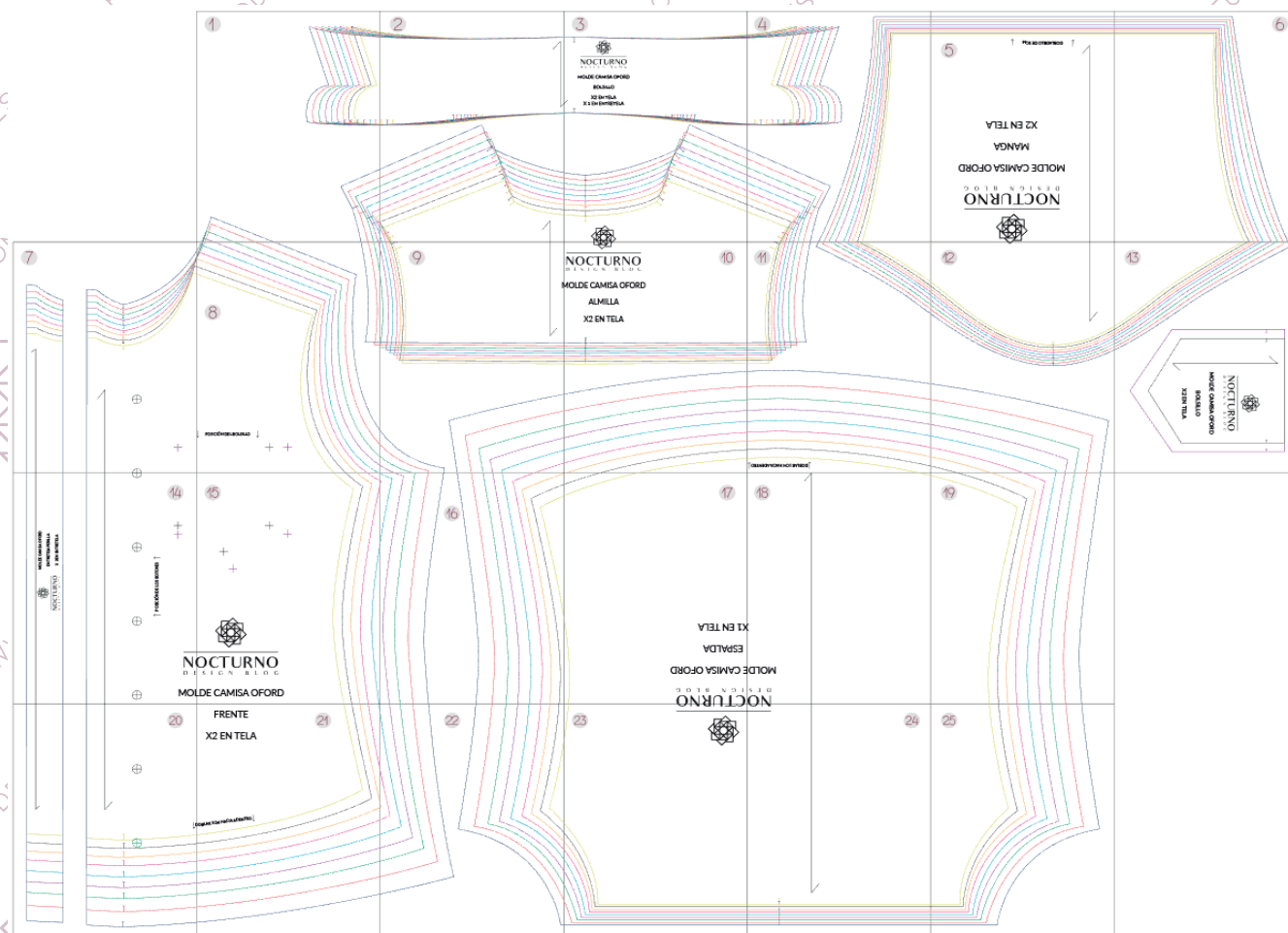
Puedes ver más indicaciones de cómo tomarte las medidas en el siguiente link:

<https://nocturnodesignblog.com/2018/11/30/como-tomar-las-medidas-del-cuerpo/>

- Talla XXS
- Talla XS
- Talla S
- Talla M
- Talla L
- Talla XL
- Talla XXL
- Talla 3XL
- Talla 4XL

### TABLA DE TALLAS MUJER CENTÍMETROS

TALLA	XXS	XS	S	M	L	XL	XXL	3XL	4XL
CIRC. BUSTO	83 - 85	86 - 89	90 - 93	94 - 97	98 - 102	103 - 107	108 - 112	113 - 118	119 - 124
CIRC. CADERA	88 - 90	91 - 94	95 - 98	99 - 102	103 - 107	108 - 112	113 - 118	119 - 124	125 - 131
ESTATURA	150 - 165								



**Importante:** El margen de costura de este molde es de 1cm y todas las piezas ya lo incluyen.

## ANTES DE IMPRIMIR EL MOLDE:

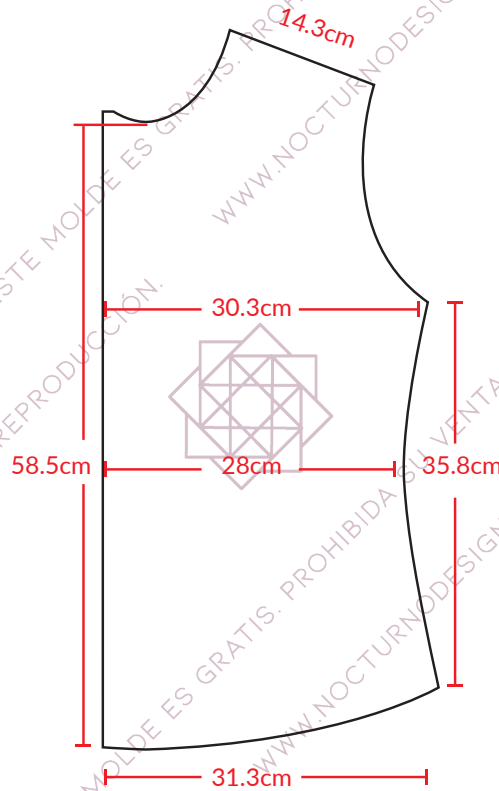
Antes de imprimir todo el molde realiza la siguiente prueba de impresión. Si el cuadrado no mide 5cm X 5cm, debes cambiar los ajustes de impresión para que el molde quede impreso con las medidas correctas.

PRUEBA DE IMPRESIÓN:  
ESTE CUADRADO DEBE  
MEDIR 5CM X 5CM

## ¿CÓMO SÉ QUE IMPRIMÍ BIEN EL MOLDE?

Una vez que imprimas el molde, puedes verificar las medidas de éste para saber que si quedó bien impreso. Debes imprimir el molde en tamaño real, en hoja carta, A4 o legal. Si las medidas coinciden, entonces quedó bien impreso. Si no, debes verificar el formato de impresión. Las medidas para la talla XS son las siguientes:

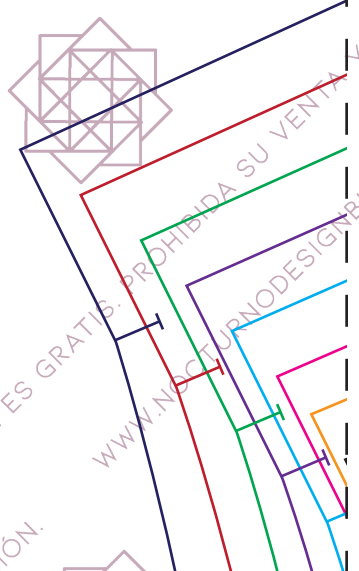
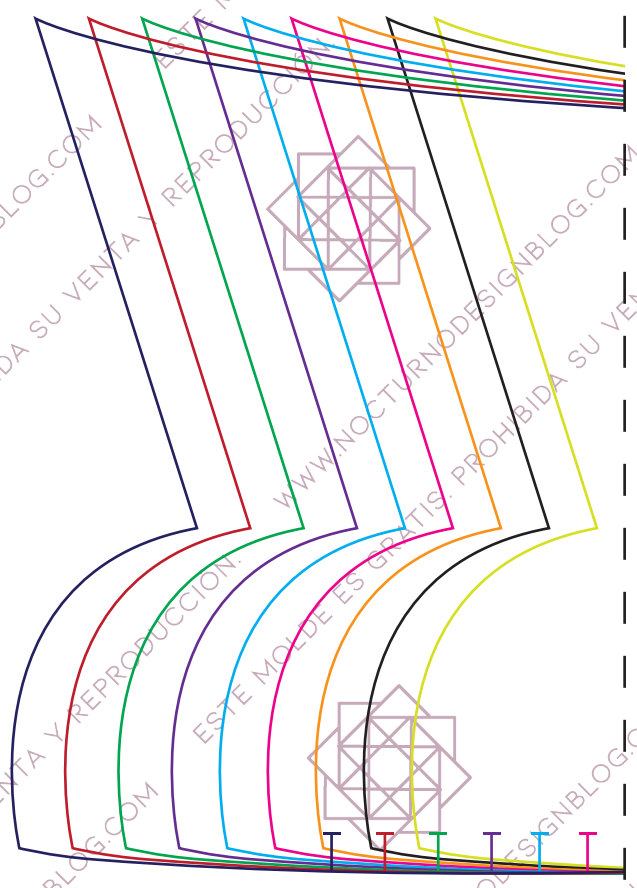
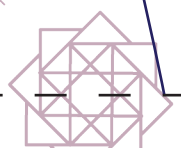
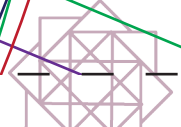
FRENTE XS



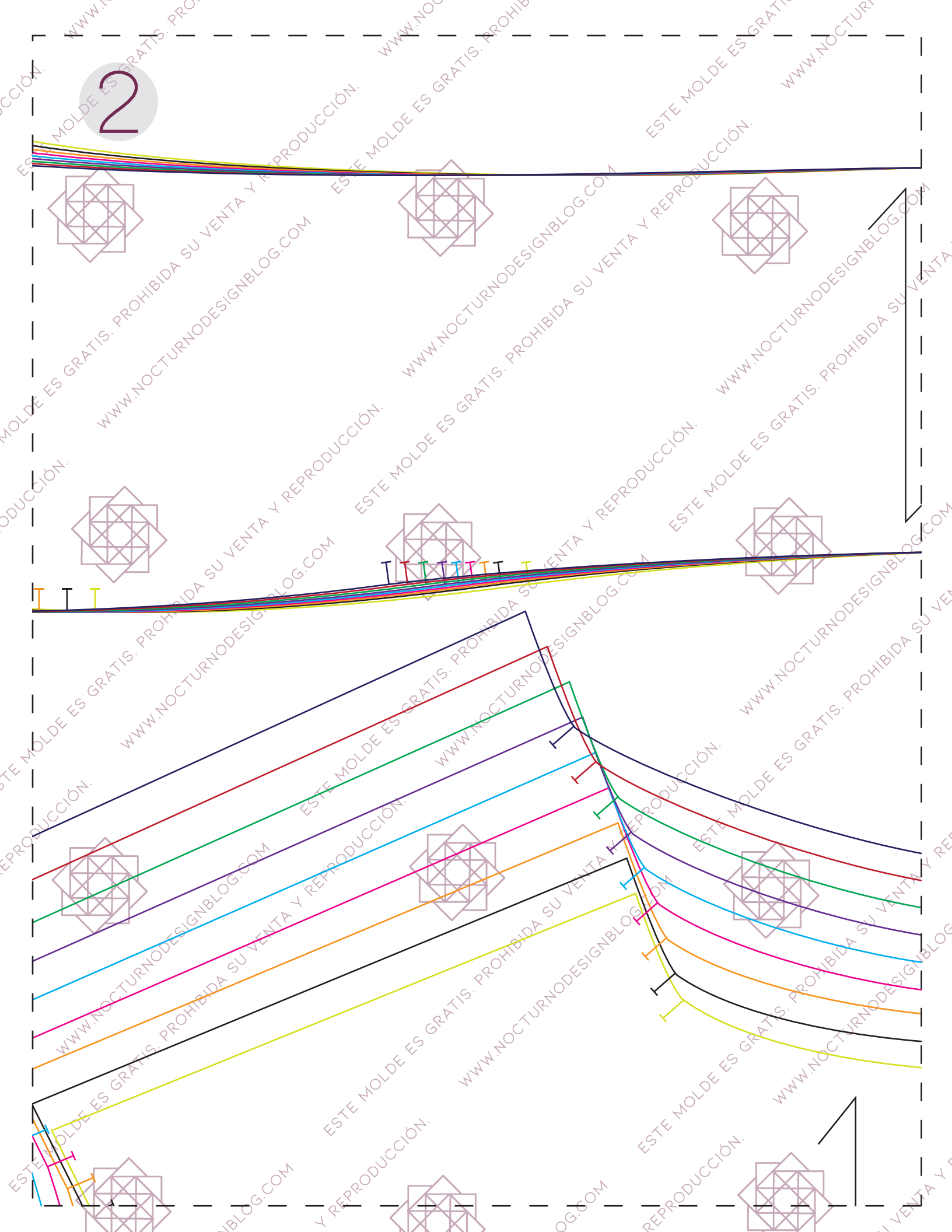
Puedes ver más indicaciones de cómo imprimir y armar los moldes en el siguiente link:

<https://www.youtube.com/watch?v=jkp7BbnbBZ8>





2



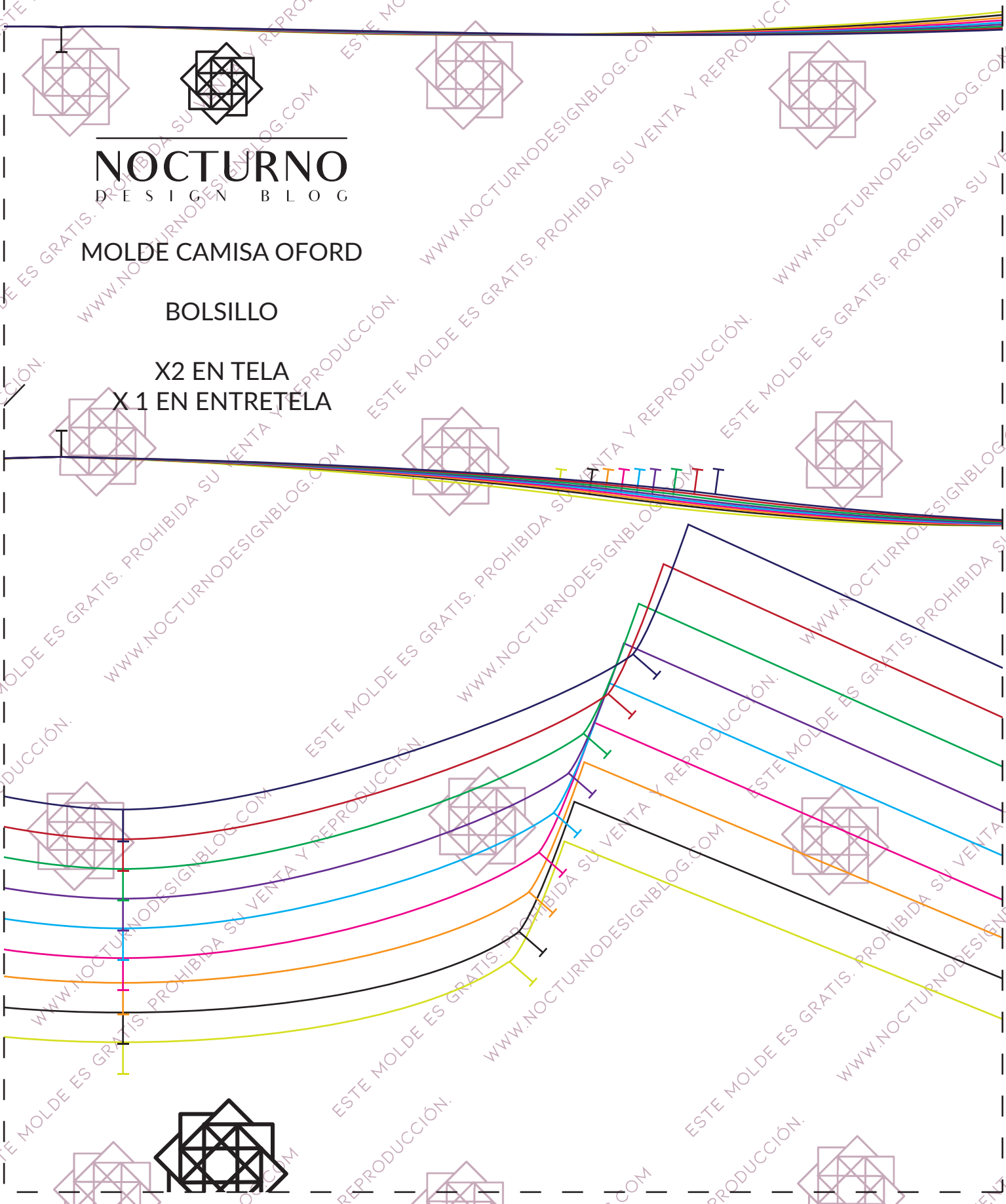
3

**NOCTURNO**  
DESIGN BLOG

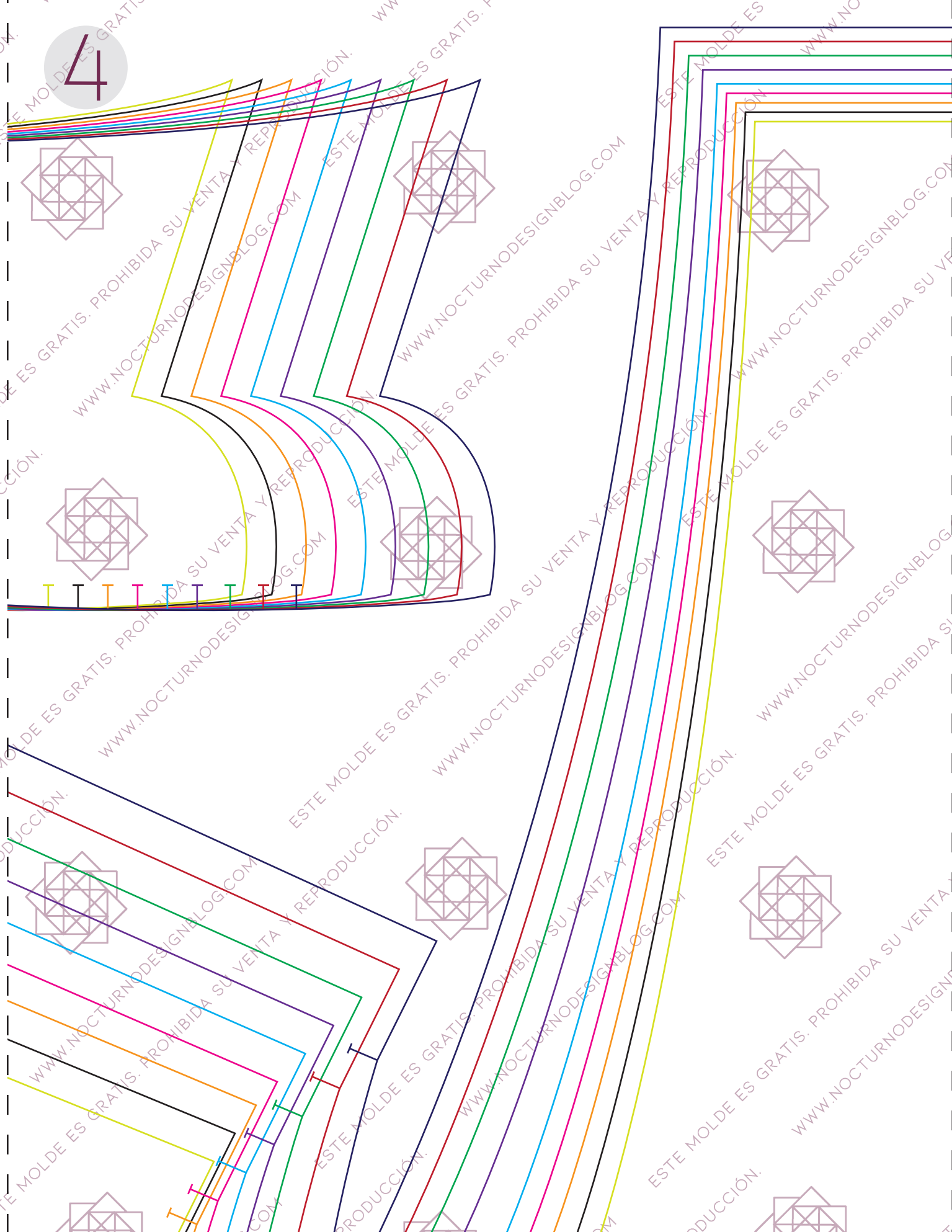
**MOLDE CAMISA OFORD**

**BOLSILLO**

**X2 EN TELA**  
**X1 EN ENTRETELA**



4



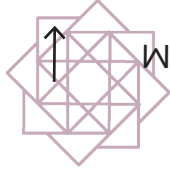
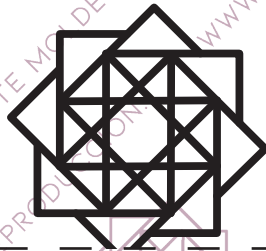
# MOLDE CAMISA FORD

## MANGA

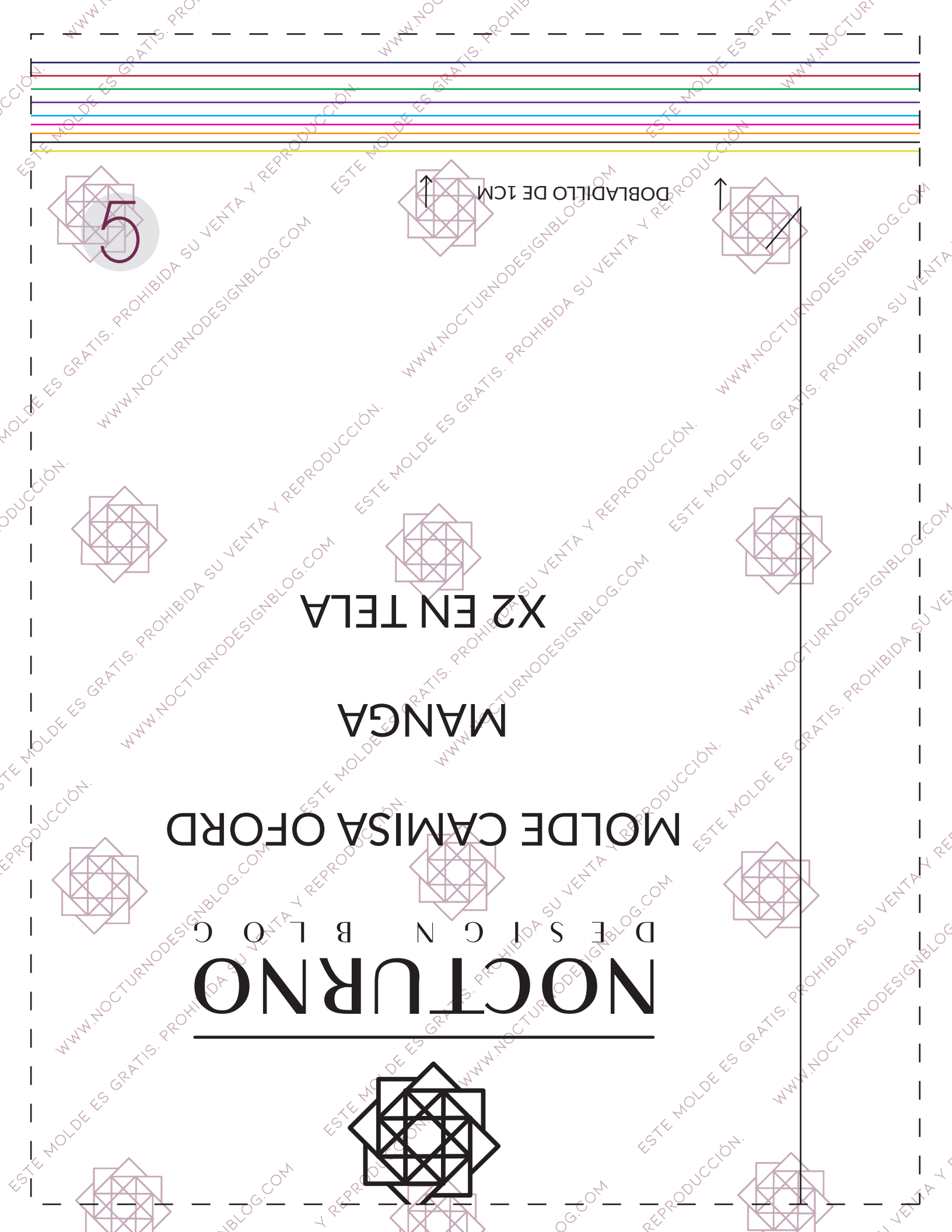
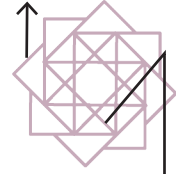
### X2 EN TELA

DESIGN  
BLOG

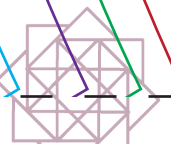
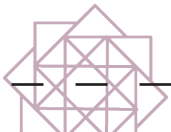
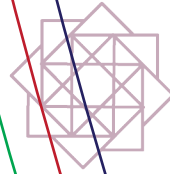
# NOCTURNO



DOBLADILLO DE 1CM

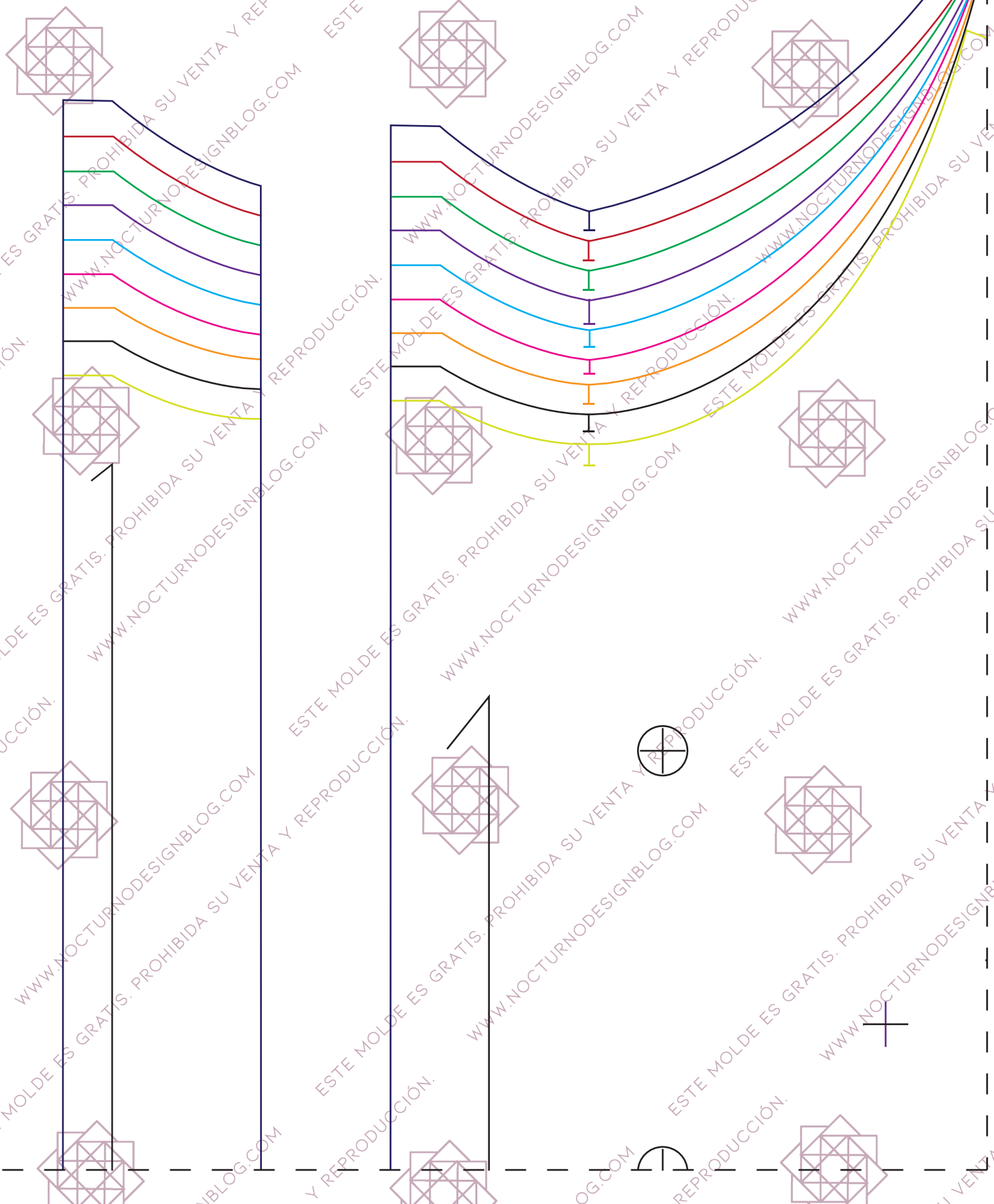


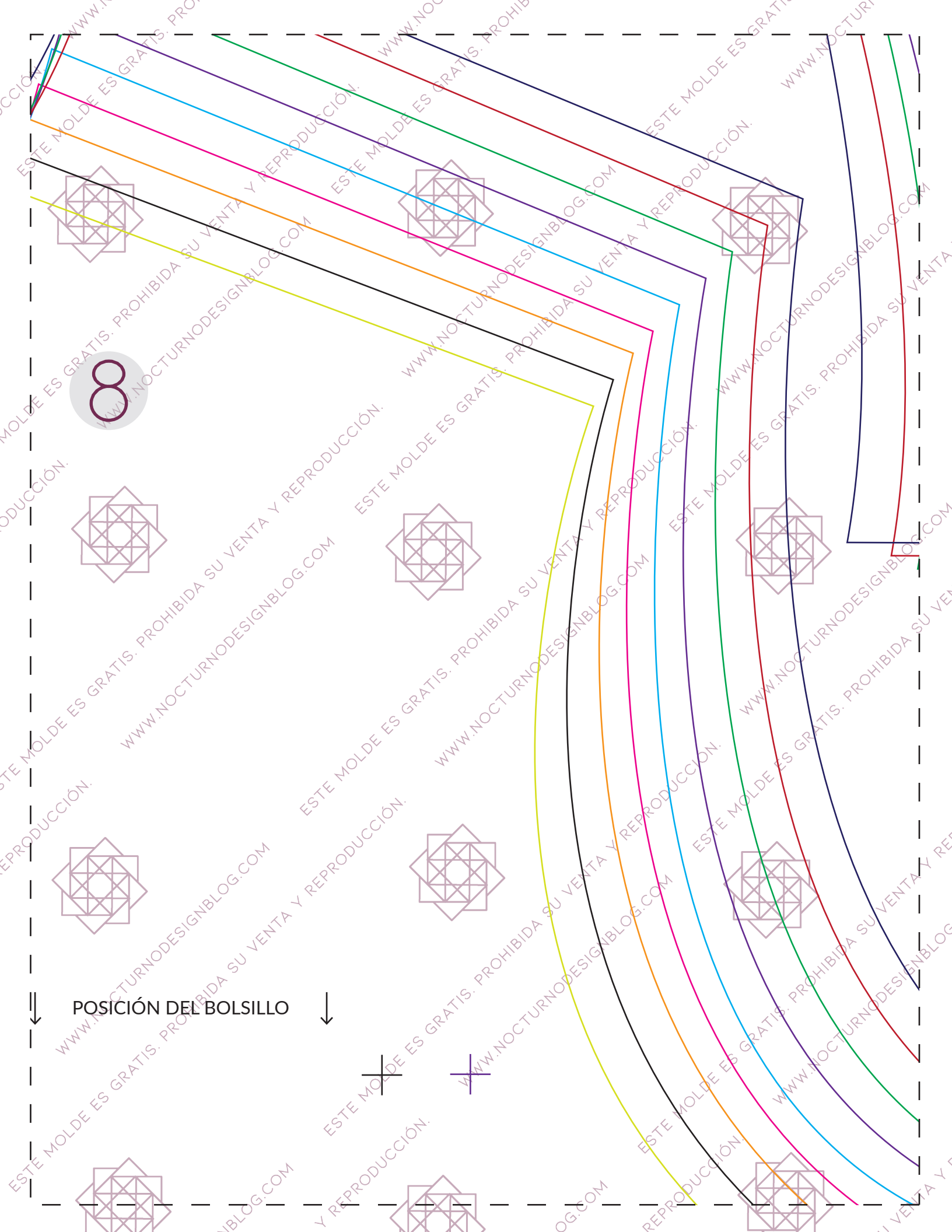




ESTE MOLDE ES GRATIS. PROHIBIDA SU VENTA Y REPRODUCCIÓN. WWW.NOCTURNODESIGNBLOG.COM

7



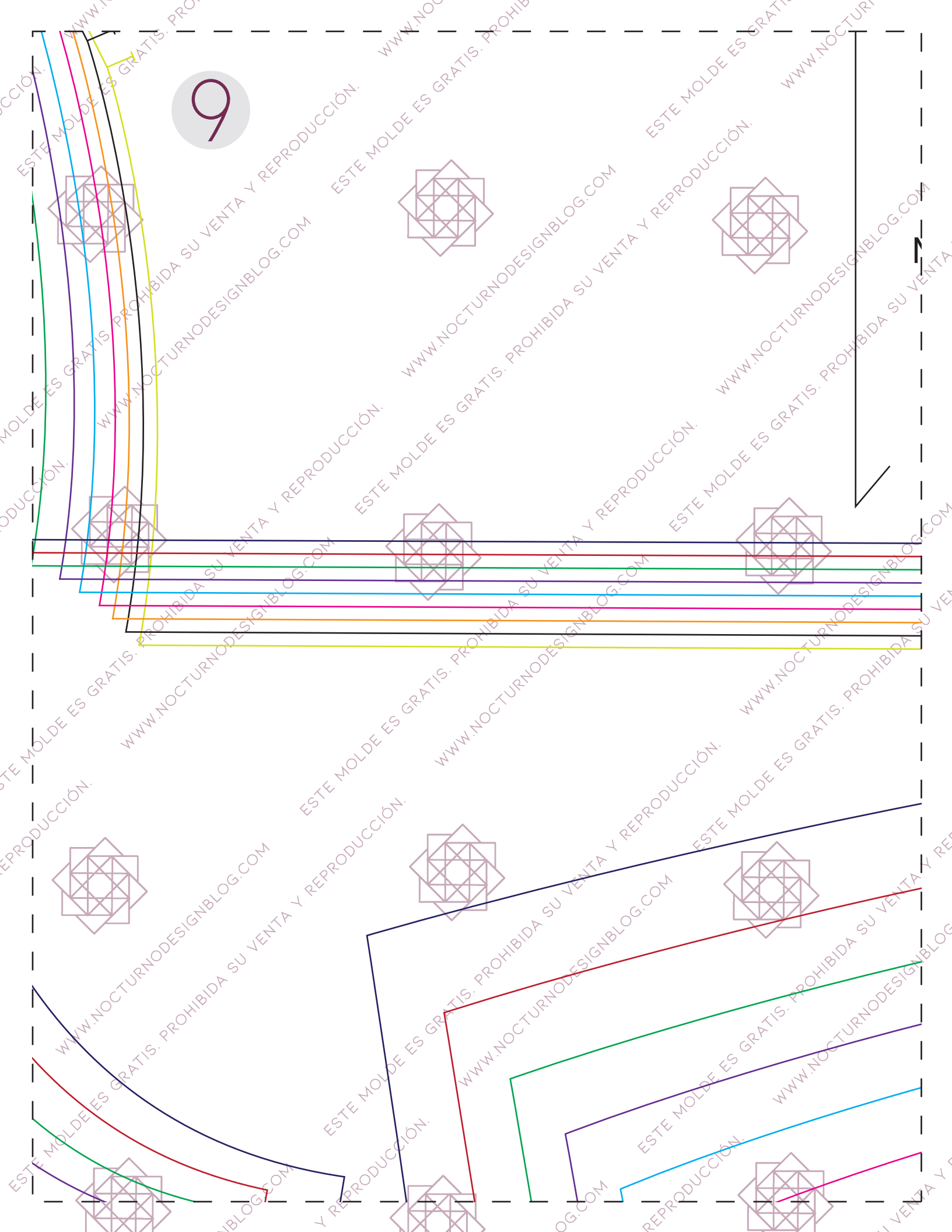


8

POSICIÓN DEL BOLSILLO



9







# NOCTURNO

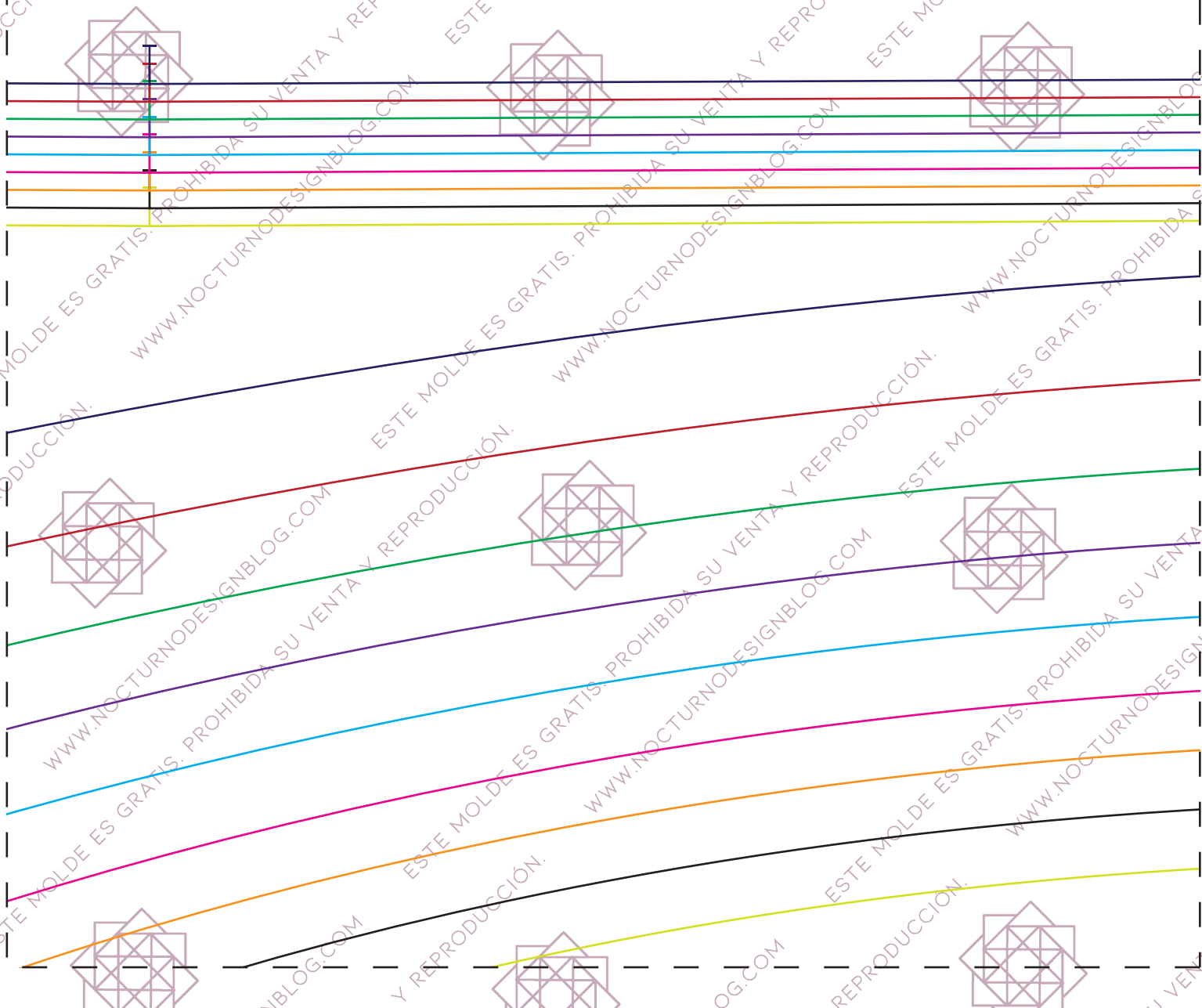
DESIGN BLOG

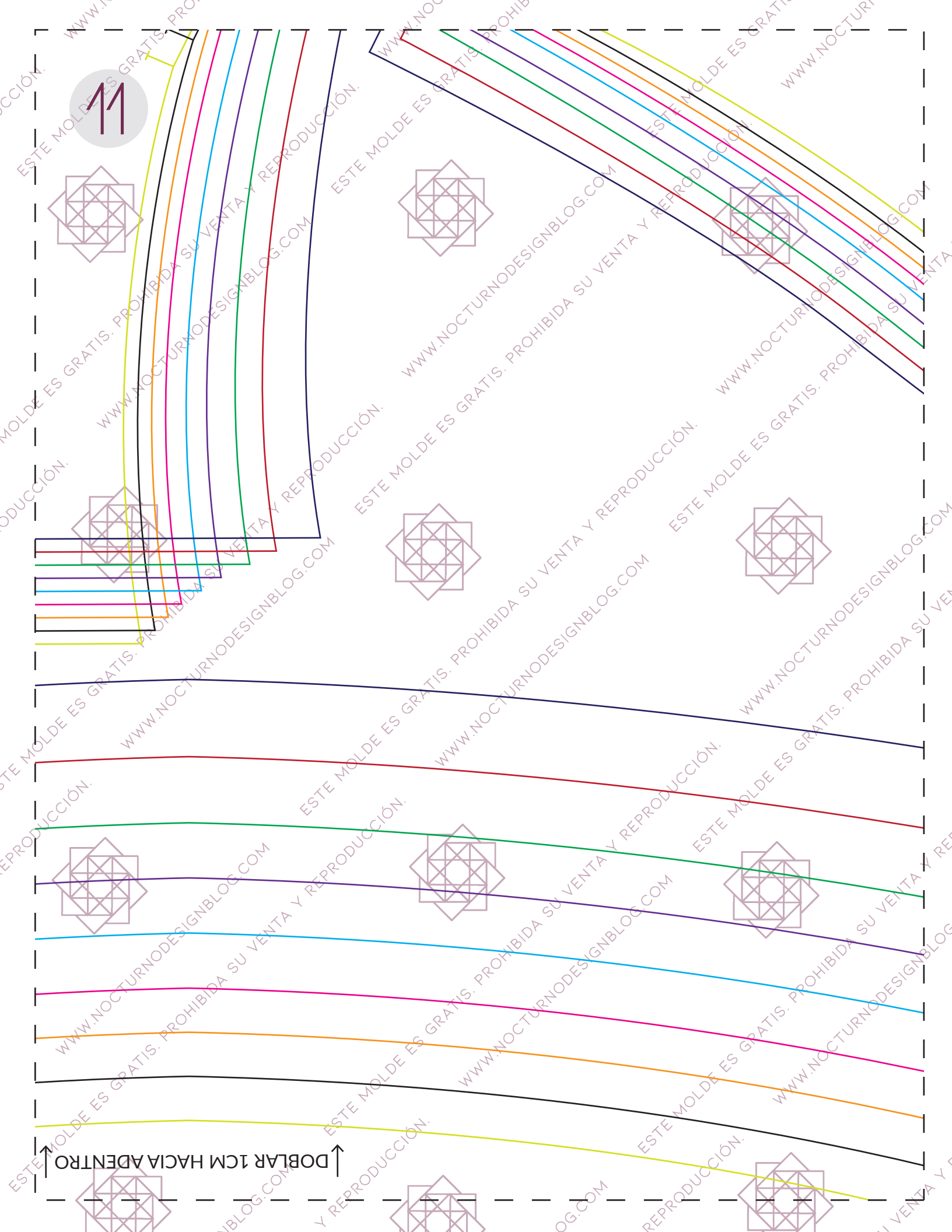
10

## MOLDE CAMISA OFORD

### ALMILLA

### X2 EN TELA

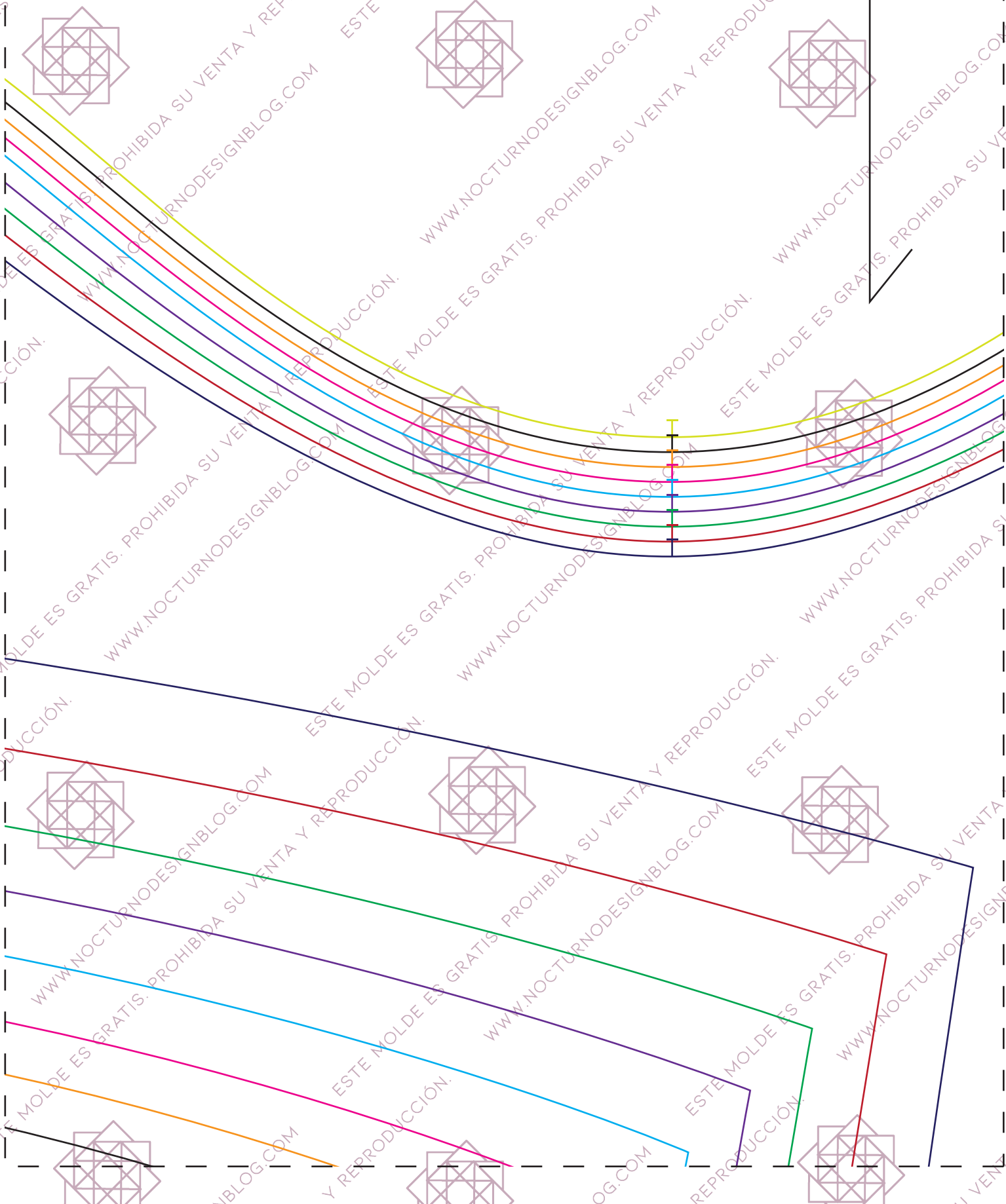




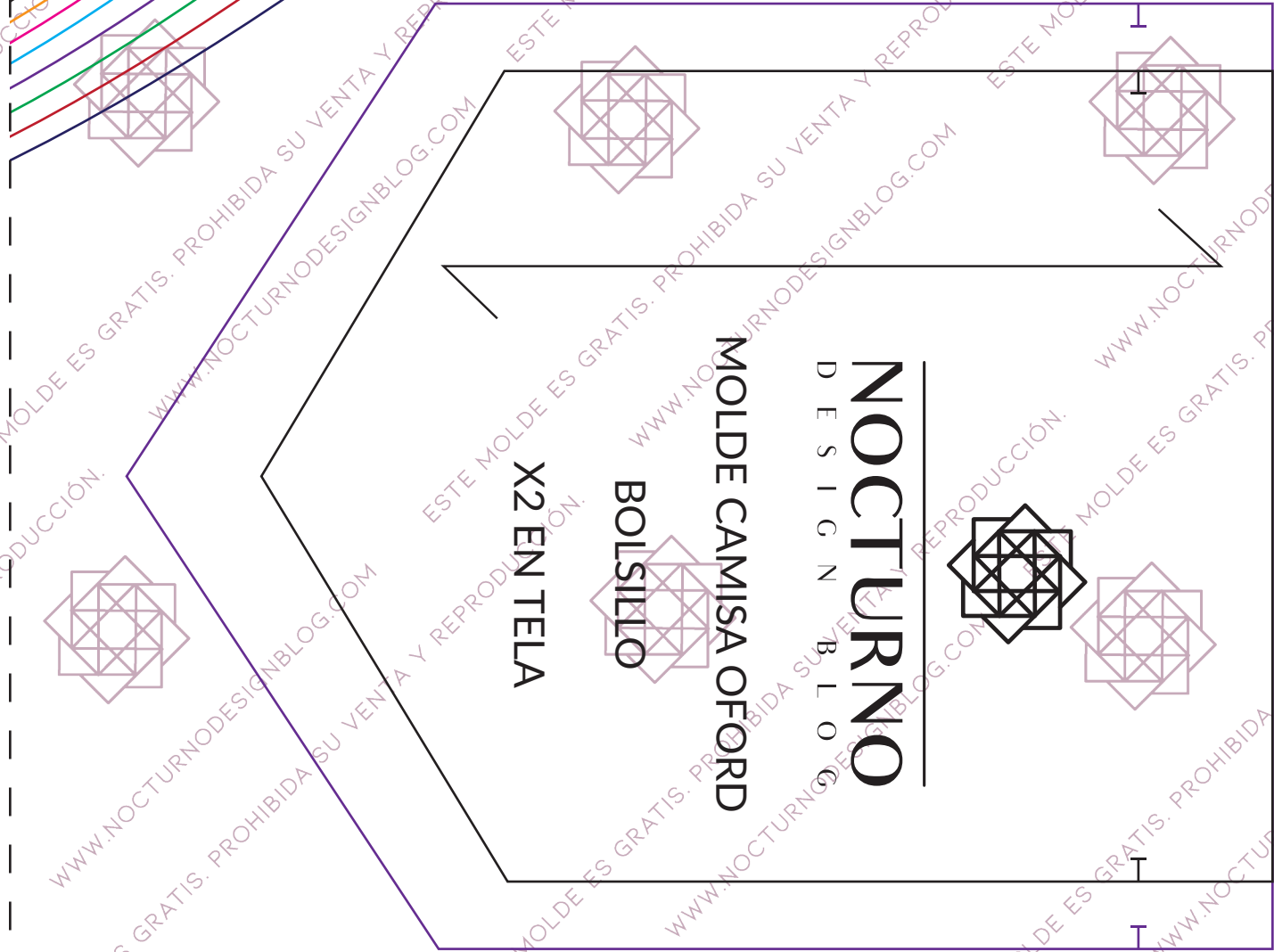
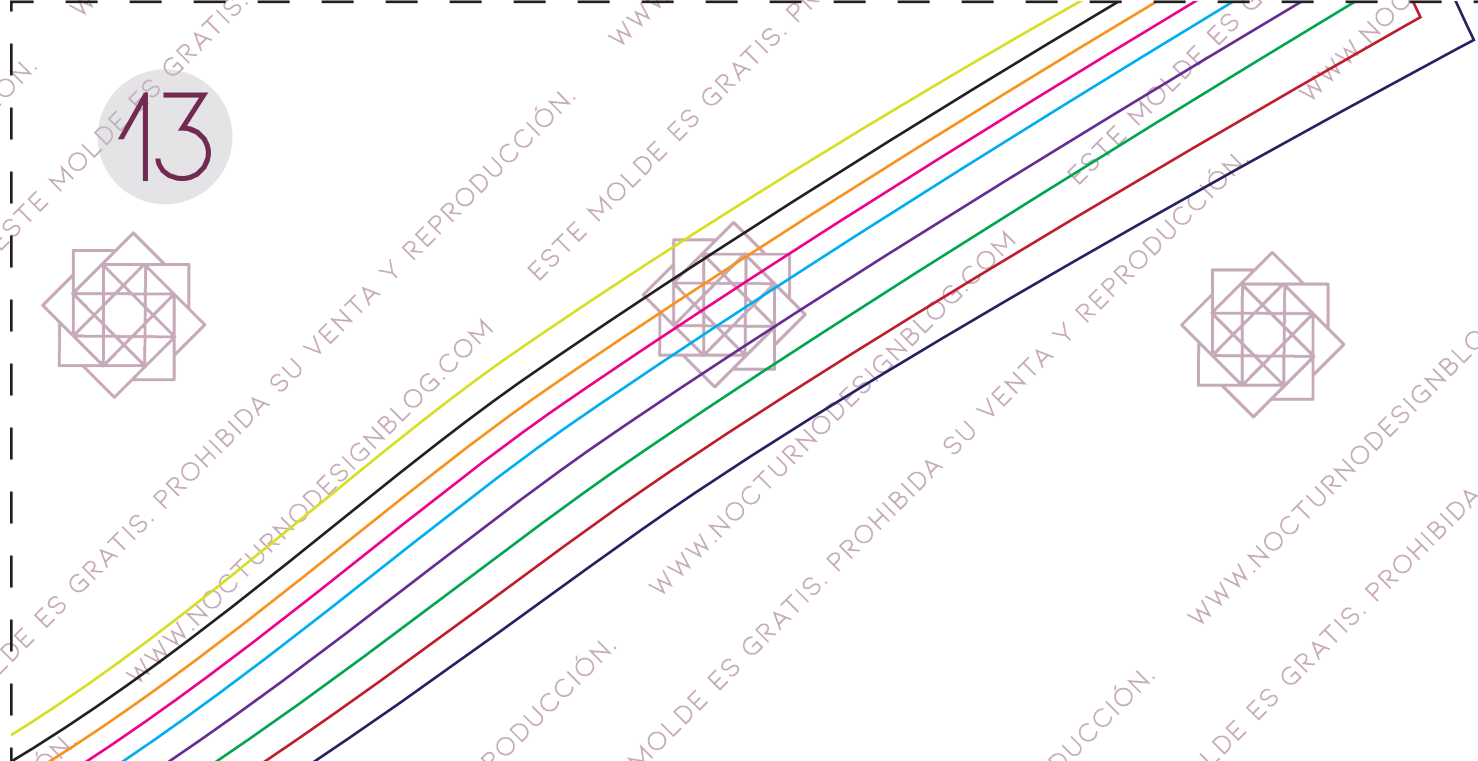
11

↑ DOBLAR 1CM HACIA ADENTRO

12



13



X2 EN TELA

BOLSILLO

MOLDE CAMISA OFORD

NOCTURNO  
DESIGN  
BLOG





MOLDE CAMISA O'FORD  
ENTRETELA PERILLA  
X 2 EN ENTRETELA

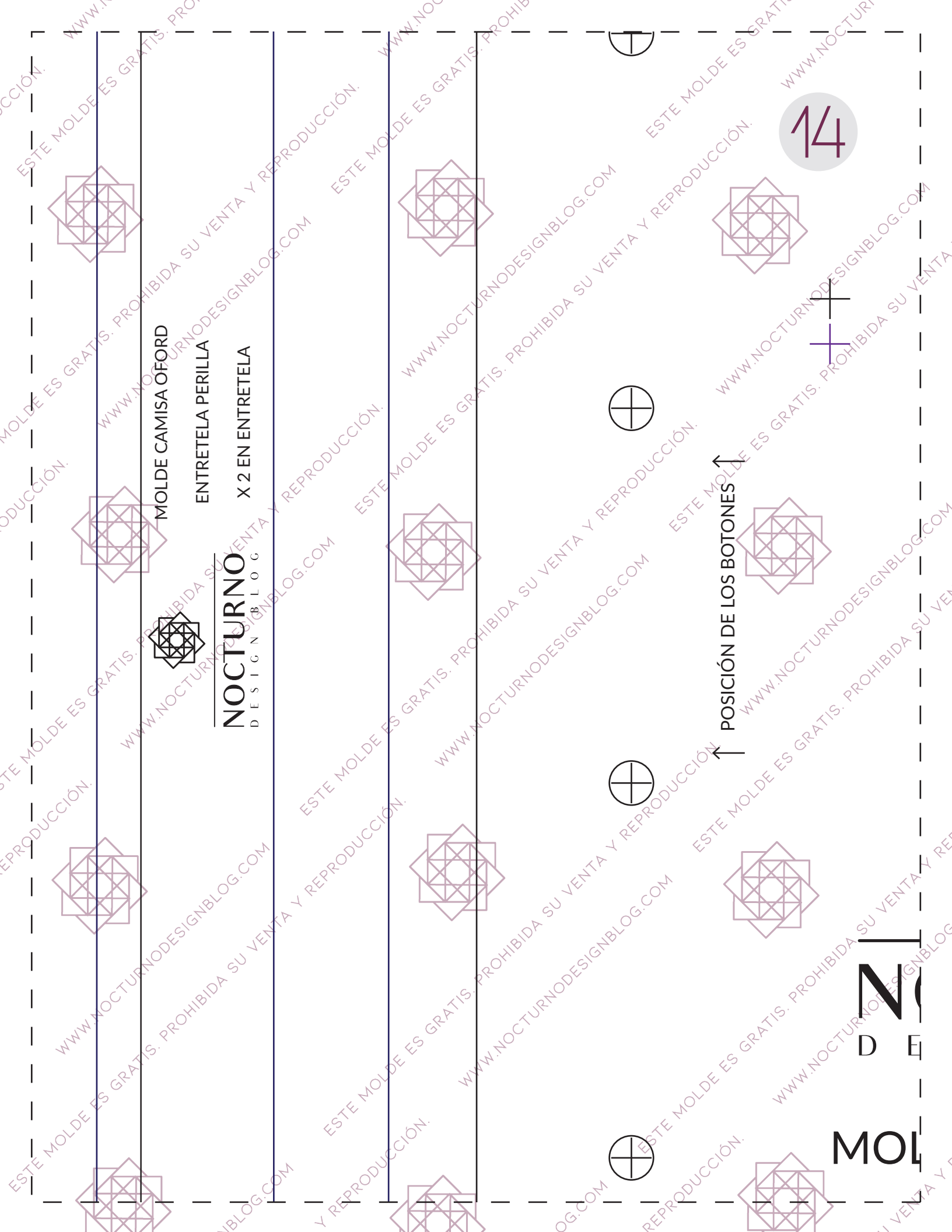


**NOCTURNO**  
DESIGN BLOG

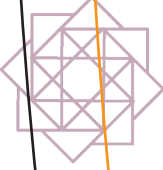
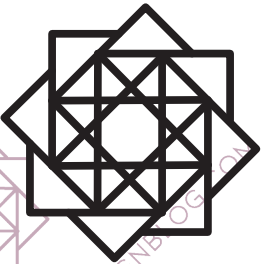
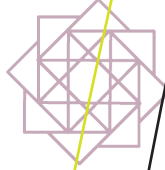
POSICIÓN DE LOS BOTONES ↑

14

**MOLDE**  
DE

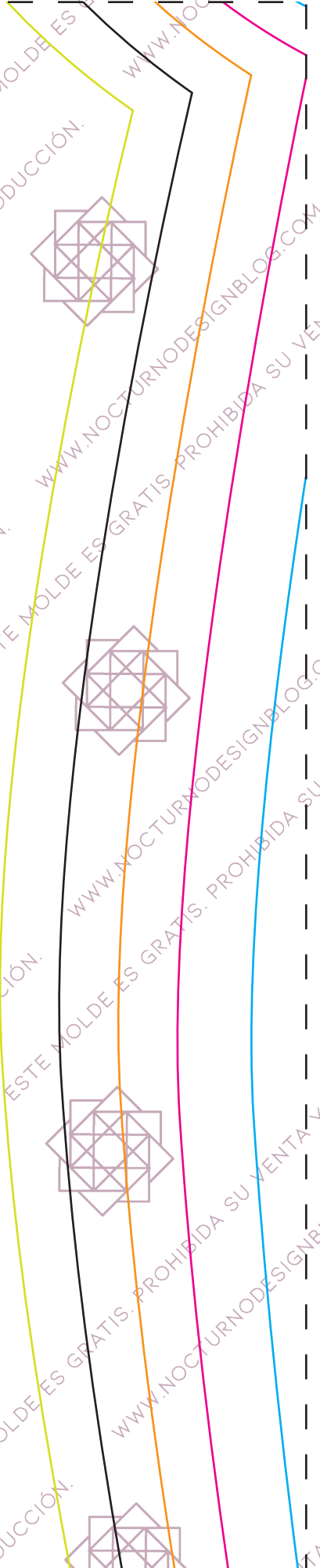
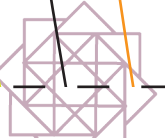
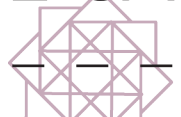


15

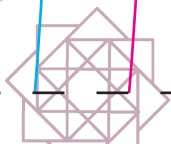
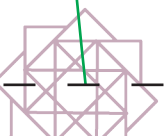
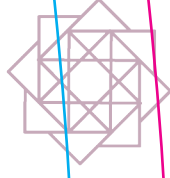
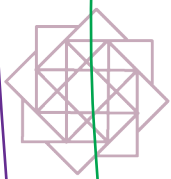
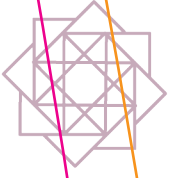
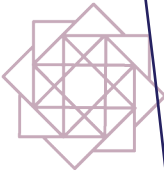
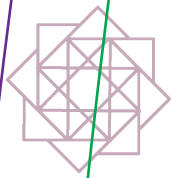
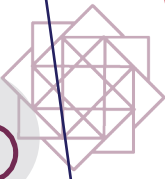
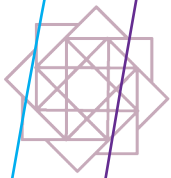


**OCTURNO**  
SIGN BLOG

**MOLDE CAMISA OFORD**

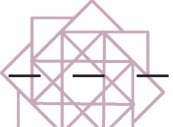


16



ESTE MOLDE ES GRATIS. PROHIBIDA SU VENTA Y REPRODUCCIÓN. WWW.NOCTURNODESIGNBLOG.COM

**CURNO**  
IGNBLOG  
**E CAMISA OFORD**  
**ESPALDA**  
**X1 EN TELA**



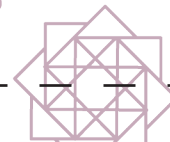


18

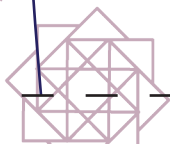
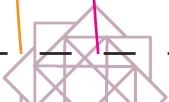
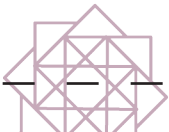
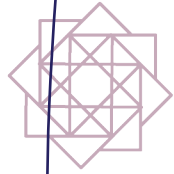
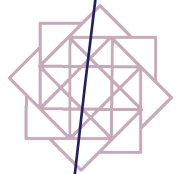
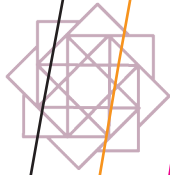
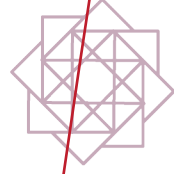
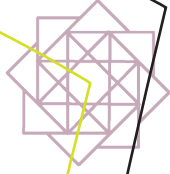


MOLDE

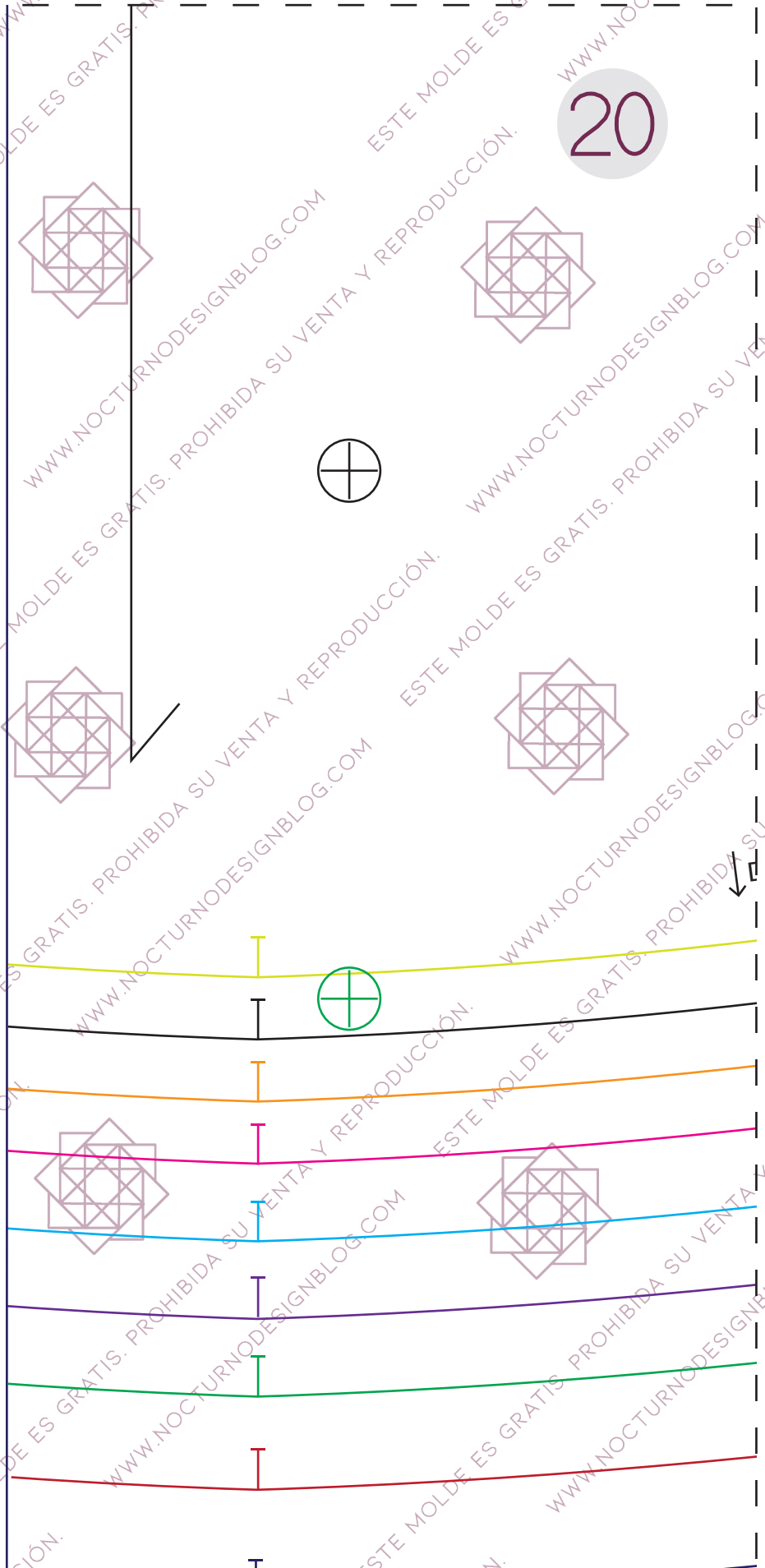
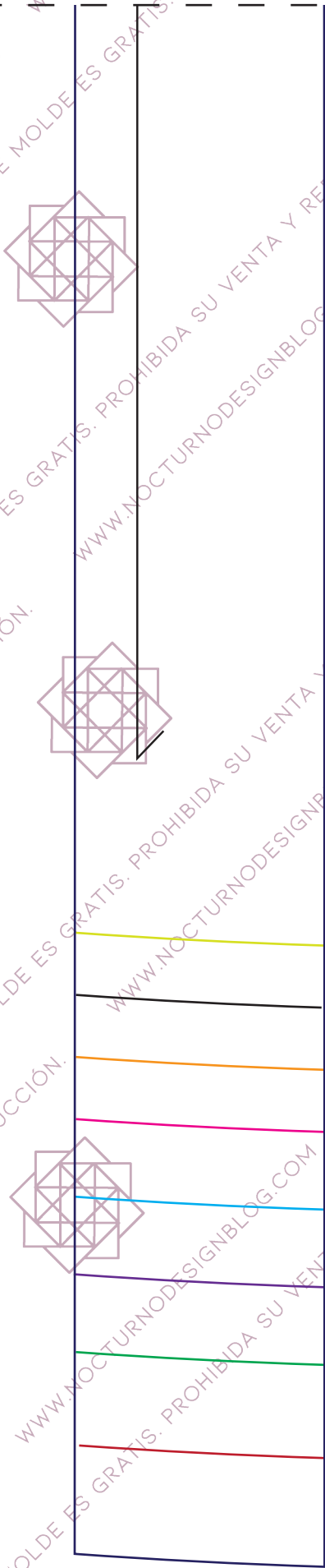
DESIGN



19



ESTE MOLDE ES GRATIS. PROHIBIDA SU VENTA Y REPRODUCCION. WWW.NOCTURNODESIGNBLOG.COM

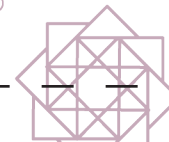
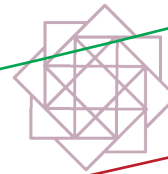
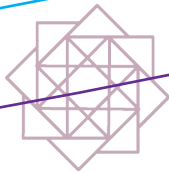
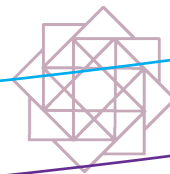
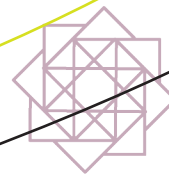


# FRENTE

21

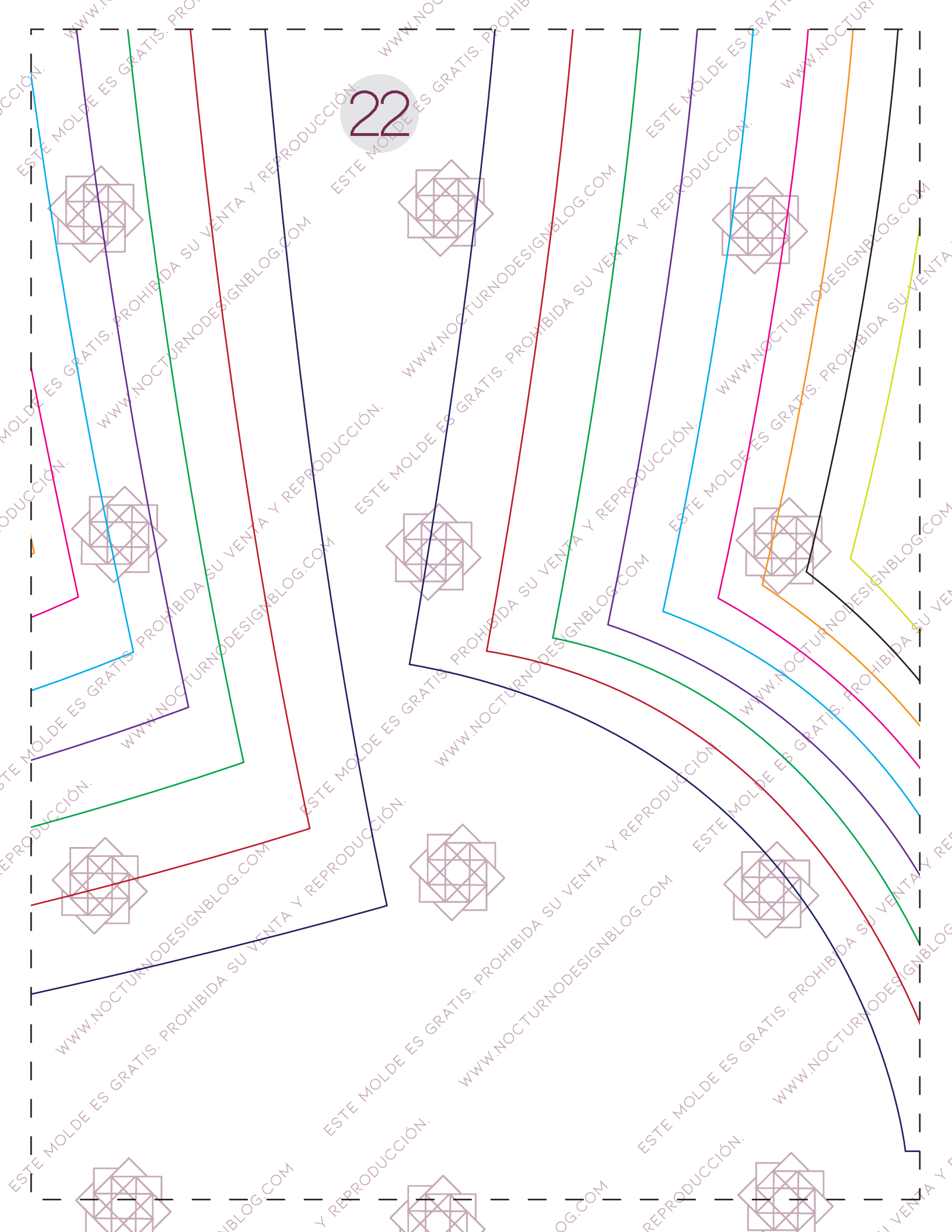
## X2 EN TELA

DOBLAR 1CM HACIA ADENTRO ↓

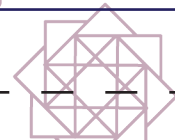
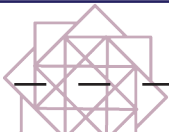
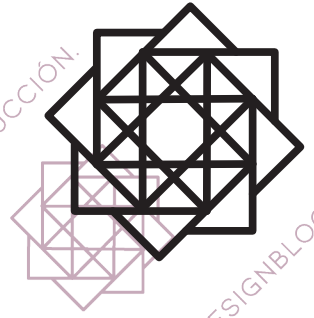


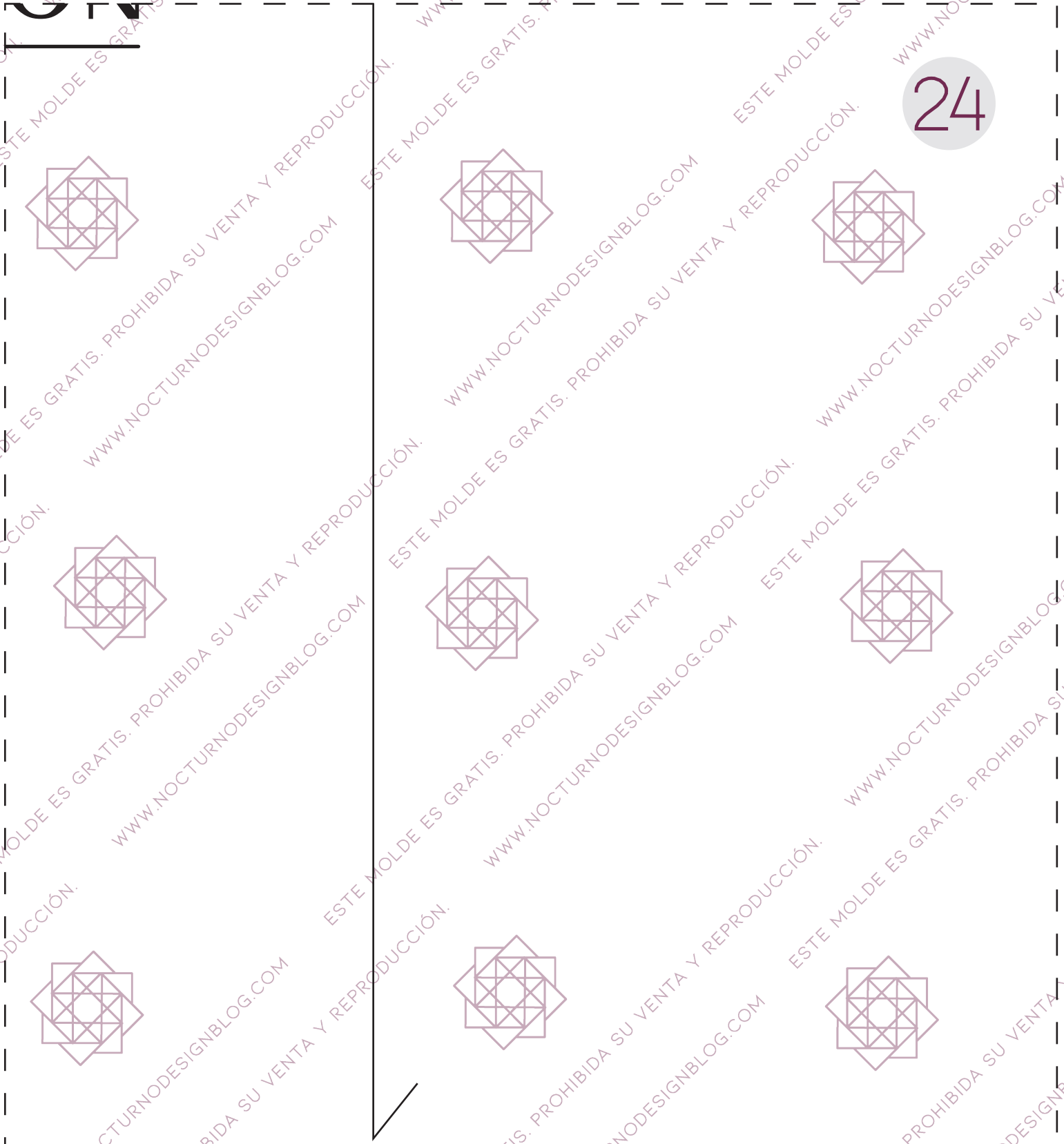
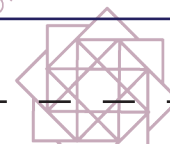
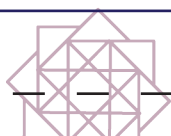


22



23





25

