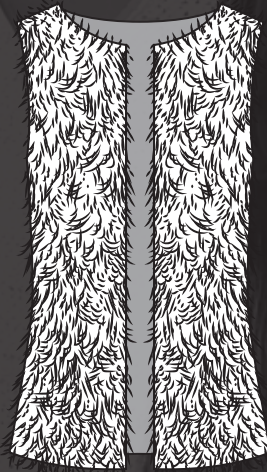




NOCTURNO

D E S I G N B L O G

ÚNICAMENTE PARA USO PERSONAL
CHALECO PELUDO CON FORRO



ESTE MOLDE NO ES PARA USO COMERCIAL.
SI DESEAS UTILIZAR ESTE MOLDE PARA TU MARCA,
PUEDES COMPRAR UNA LICENCIA EN LA TIENDA ONLINE.
APLICAN TÉRMINOS Y CONDICIONES.



NOCTURNO
DESIGN BLOG

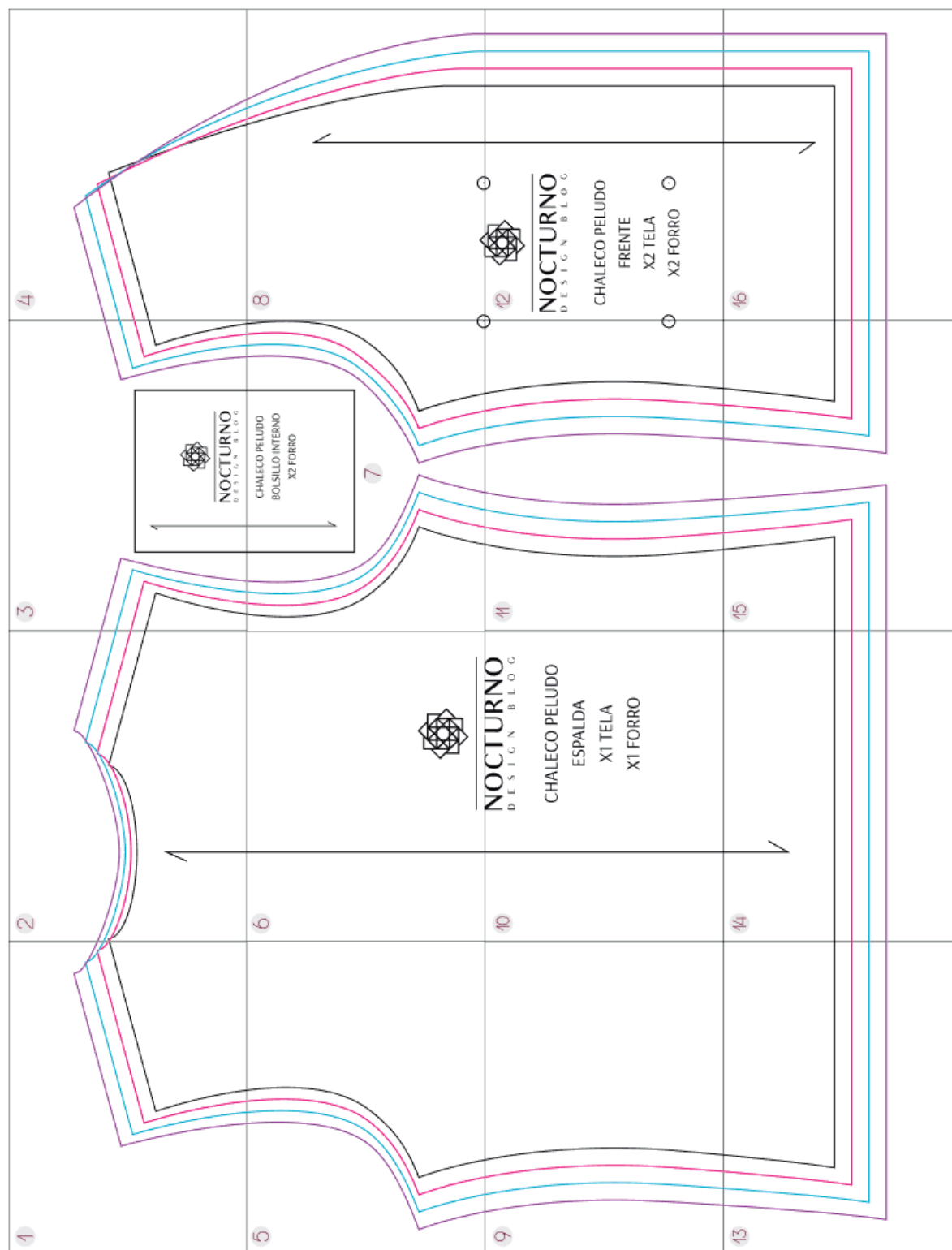
CHALECO PELUDO CON FORRO

Este molde tiene 1cm de margen de costura en todas las piezas.

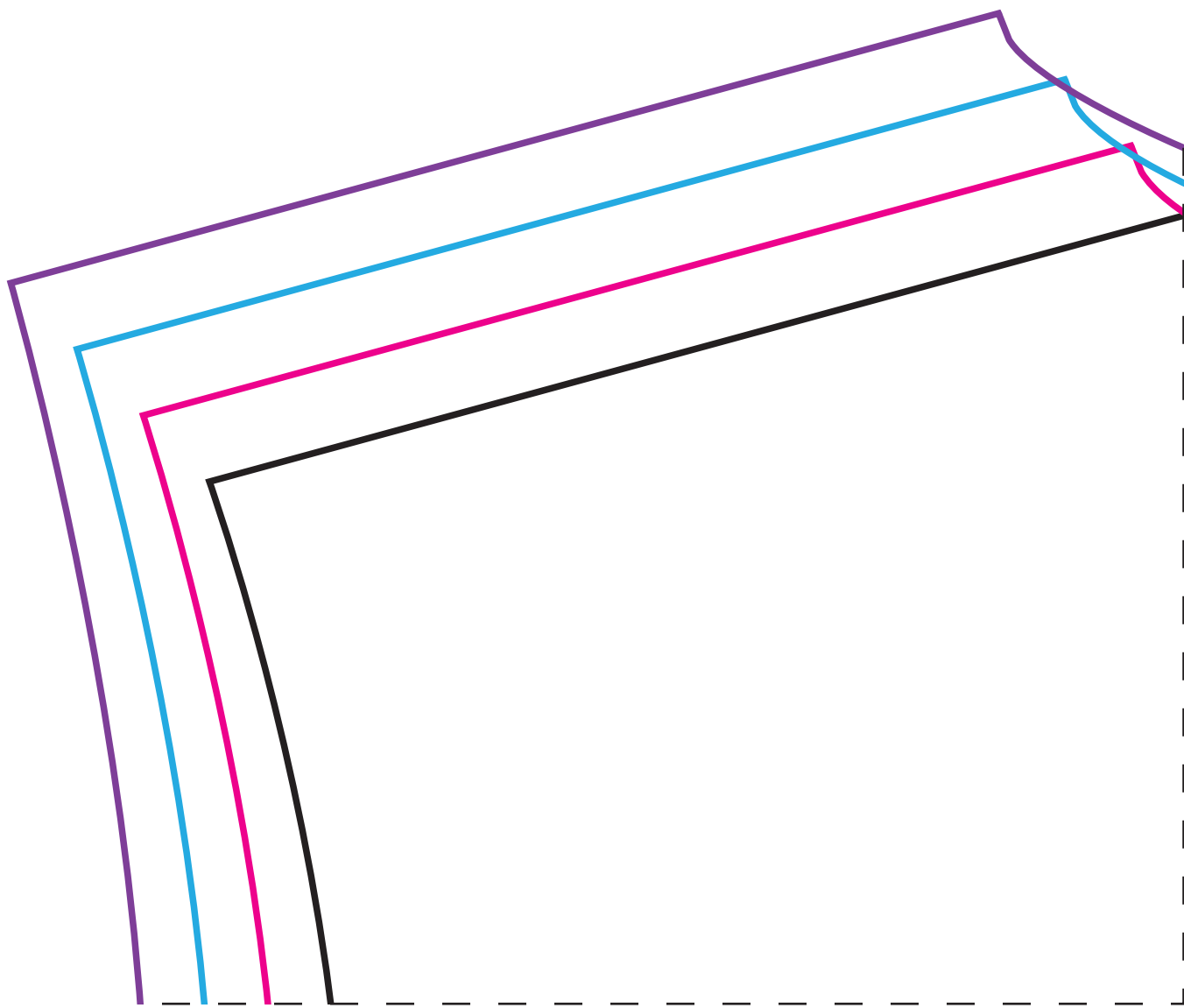
Cómo armar el molde:

1. Imprime las hojas en tamaño carta.
2. Recorta por la línea punteada.
3. Pega las hojas según el diagrama.

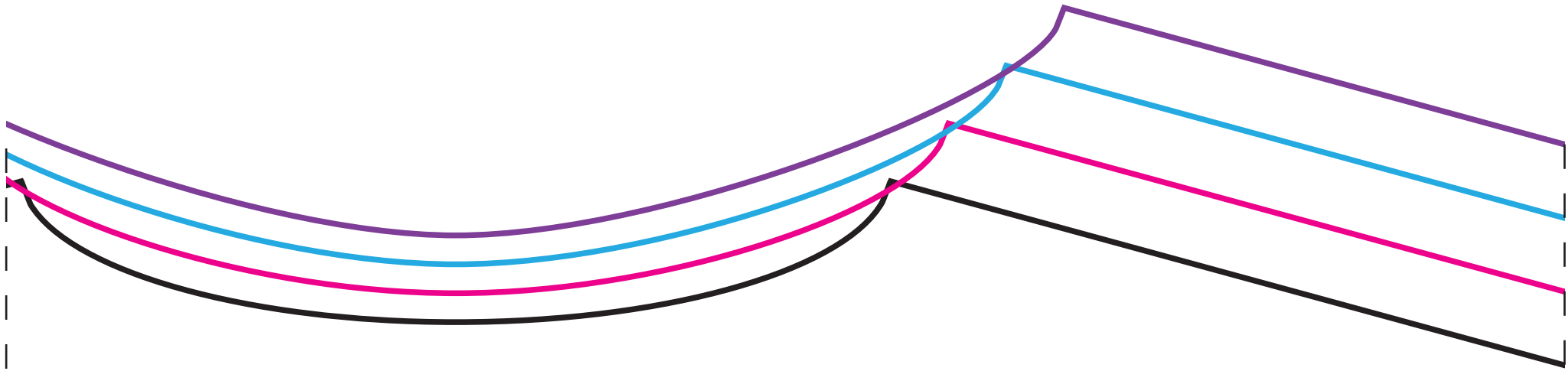
- TALLA S
- TALLA M
- TALLA L
- TALLA XL



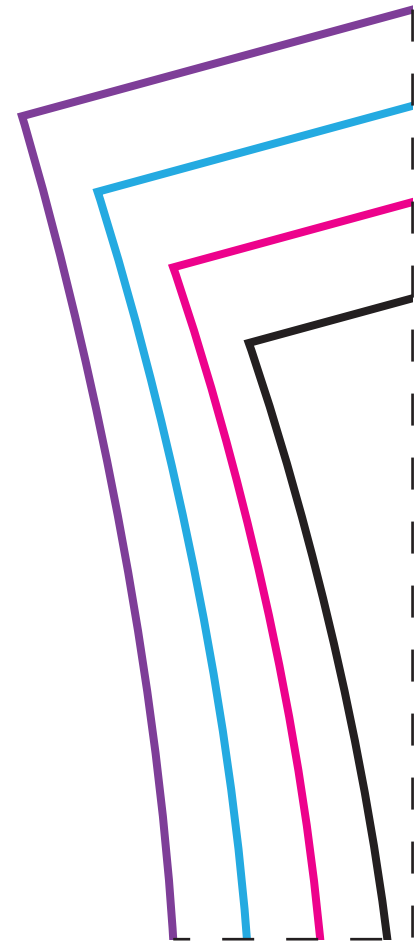
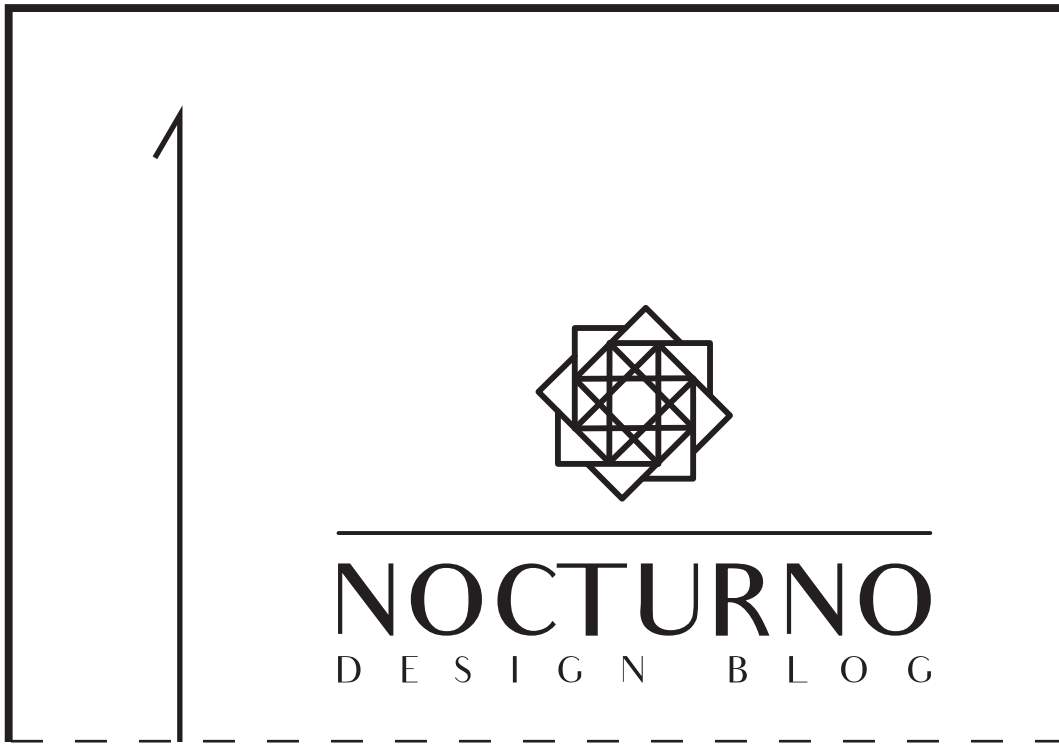
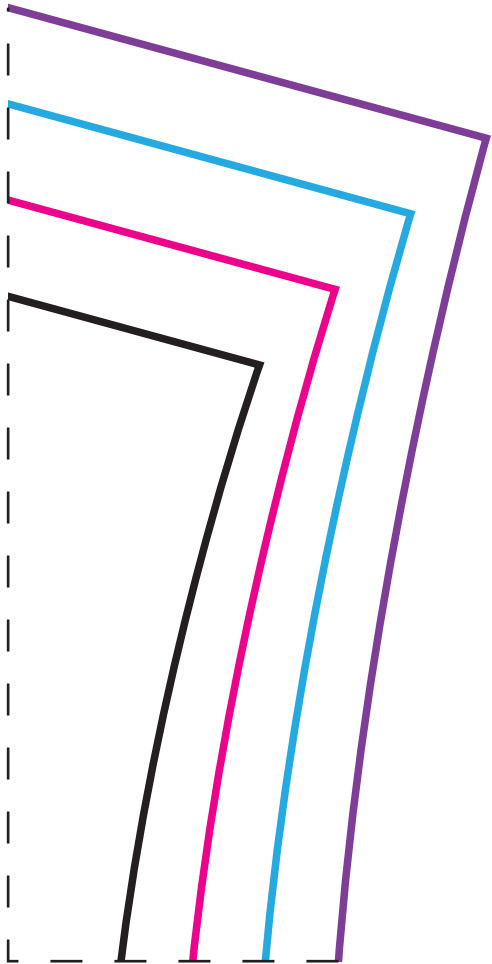
1



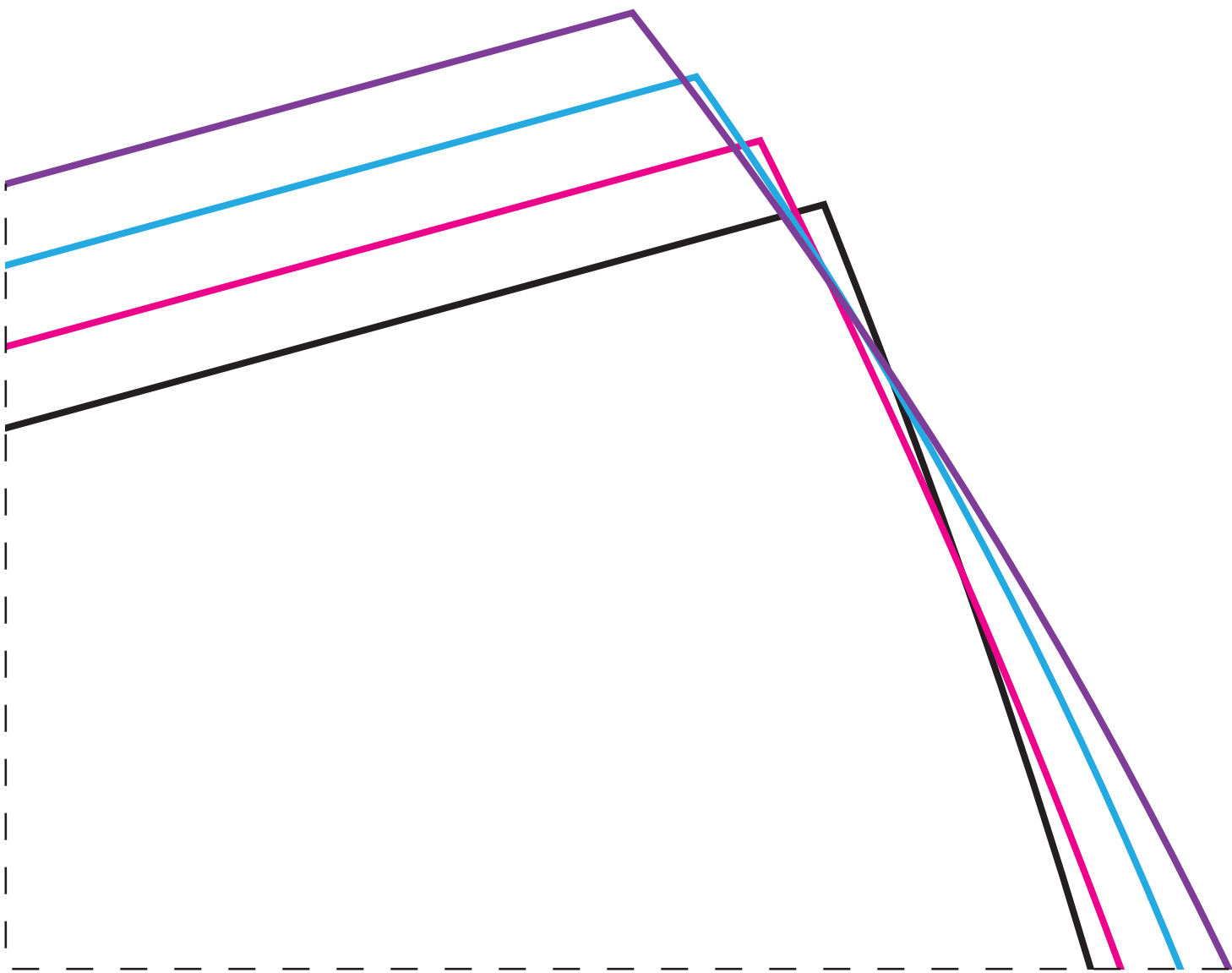
2



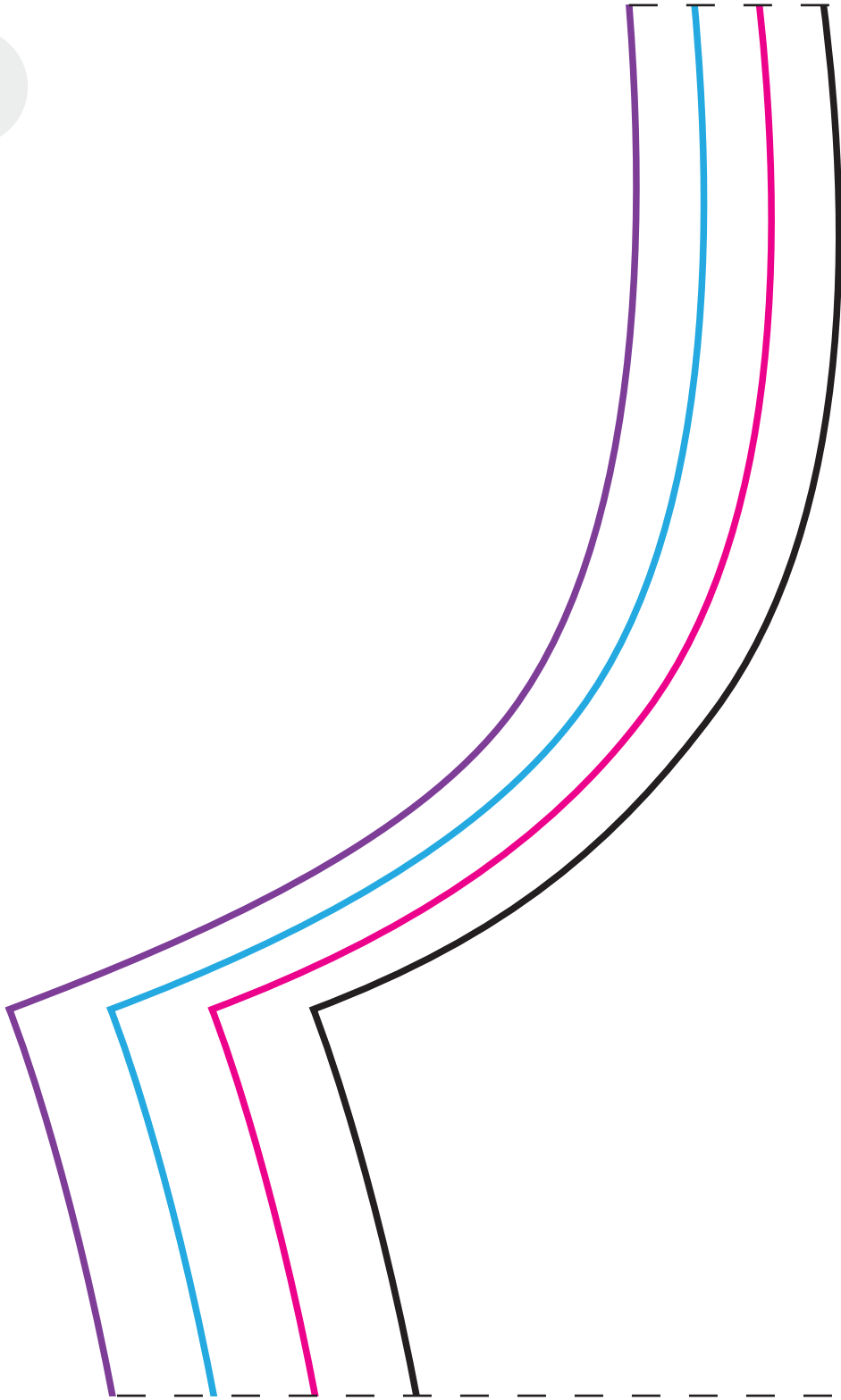
3



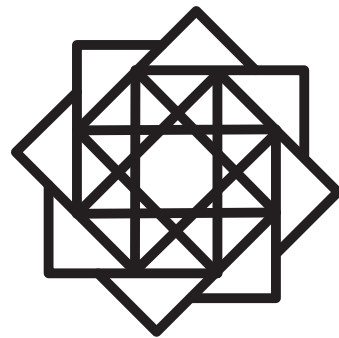
4



5



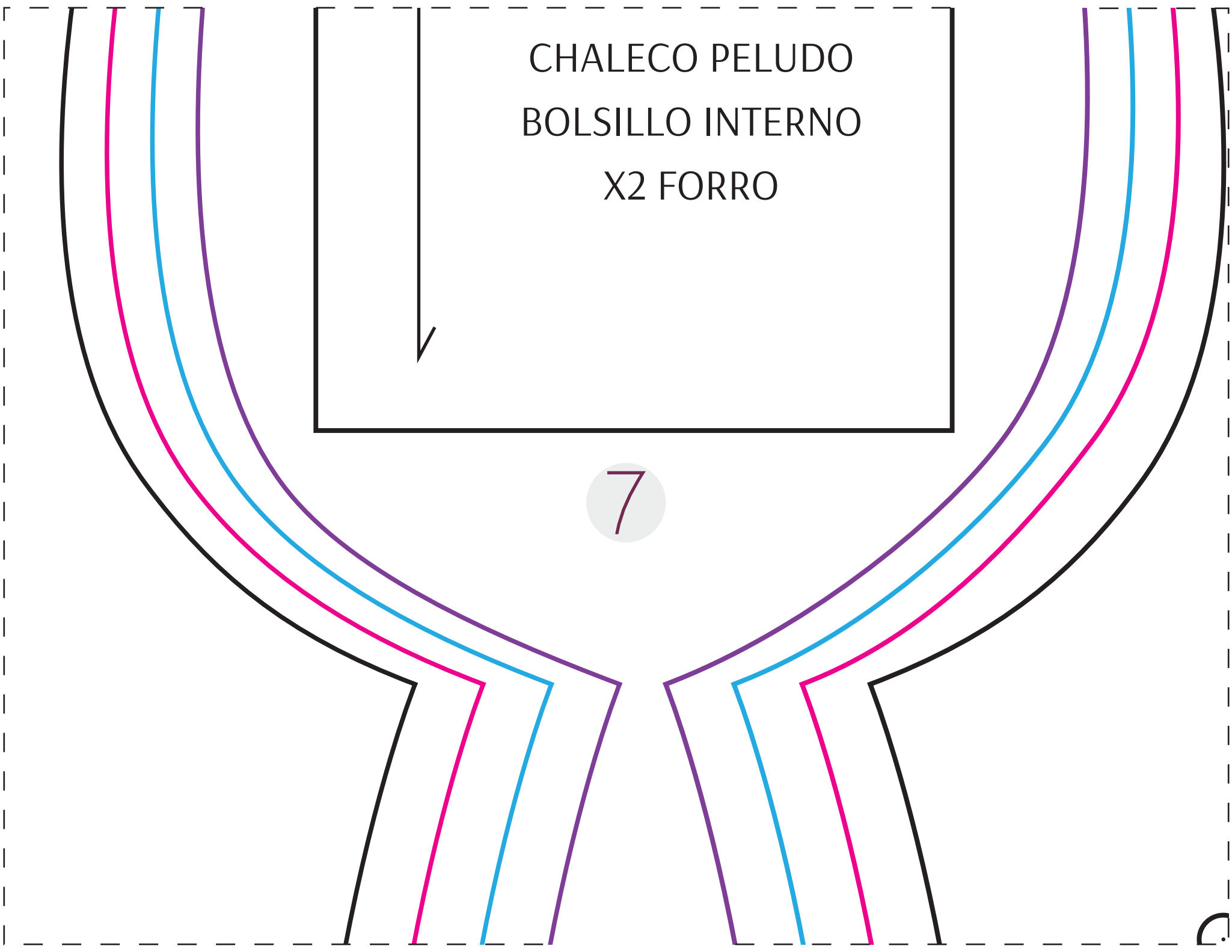
6



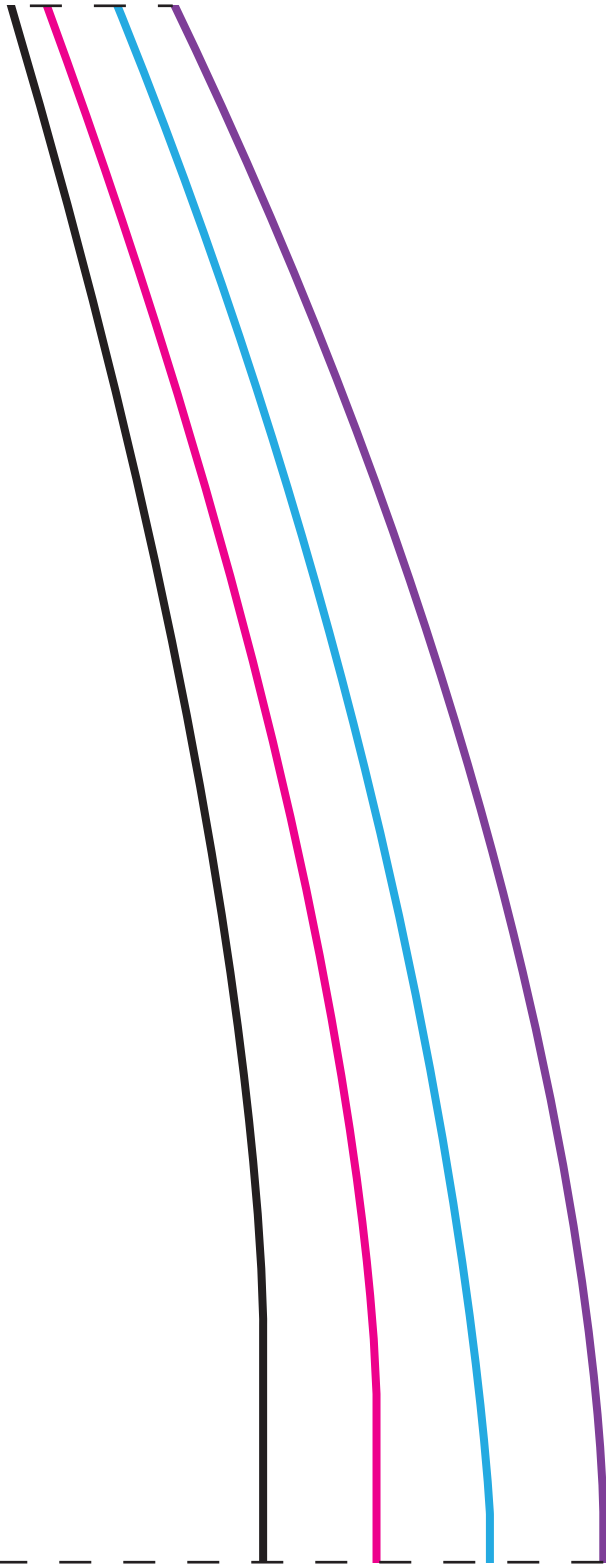
CHALECO PELUDO
BOLSILLO INTERNO
X2 FORRO



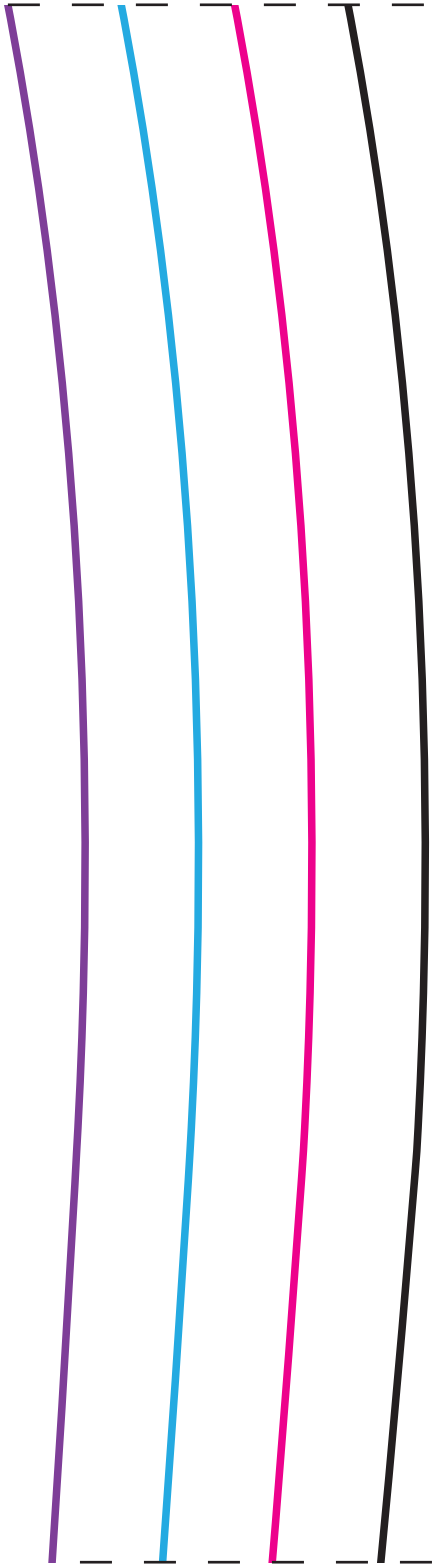
7



8



9



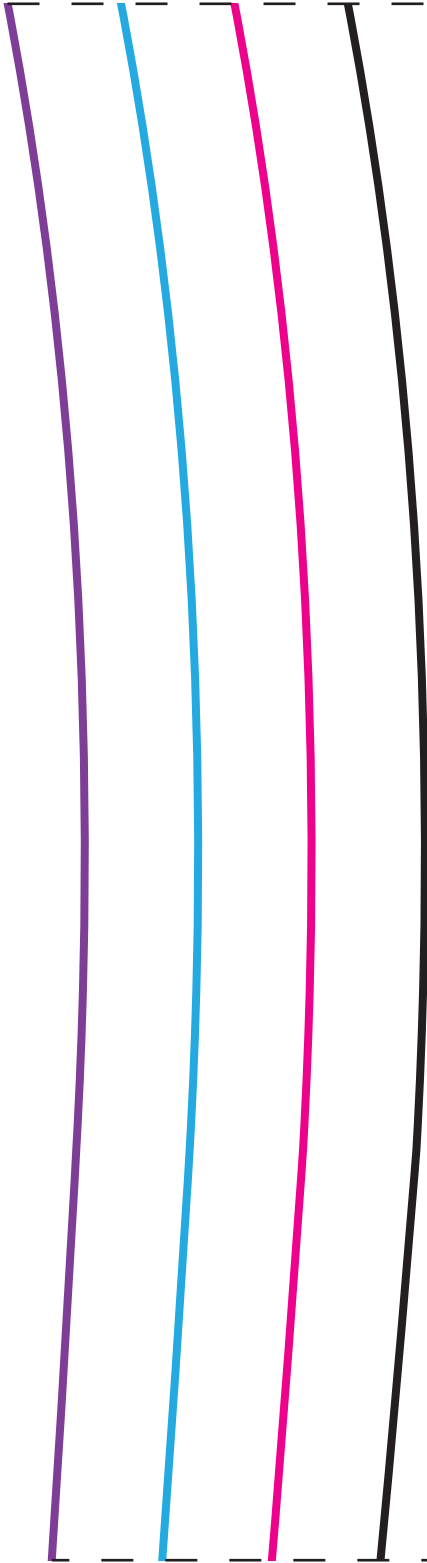
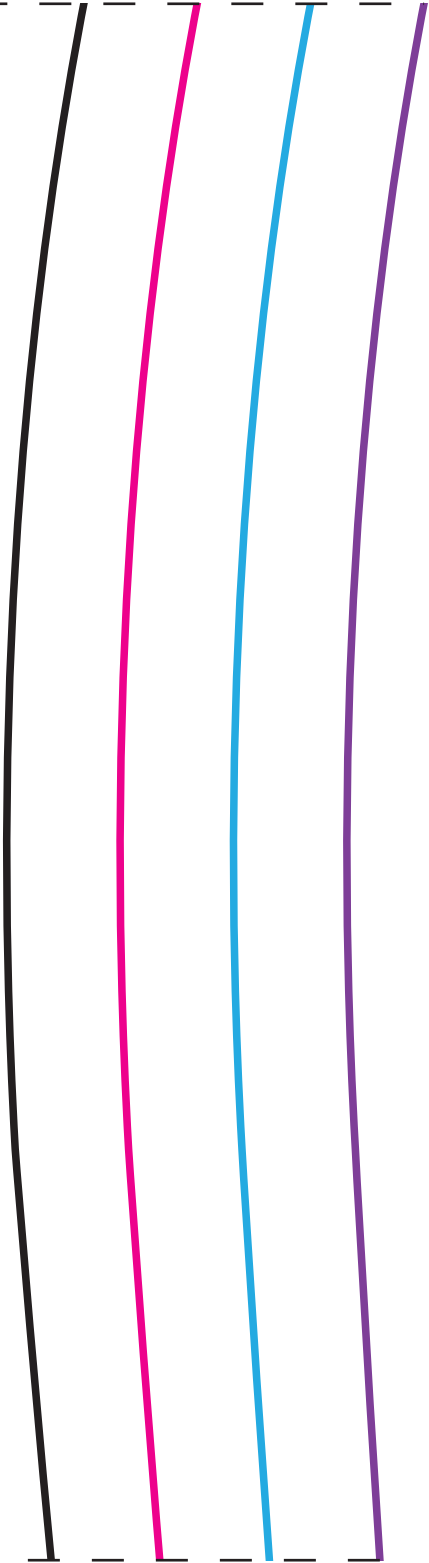
CHALECO PELUDO

ESPALDA

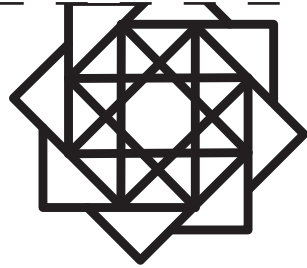
X1 TELA

X1 FORRO

11



12



NOCTURNO

D E S I G N B L O G

CHALECO PELUDO

FRENTE

X2 TELA

X2 FORRO



13

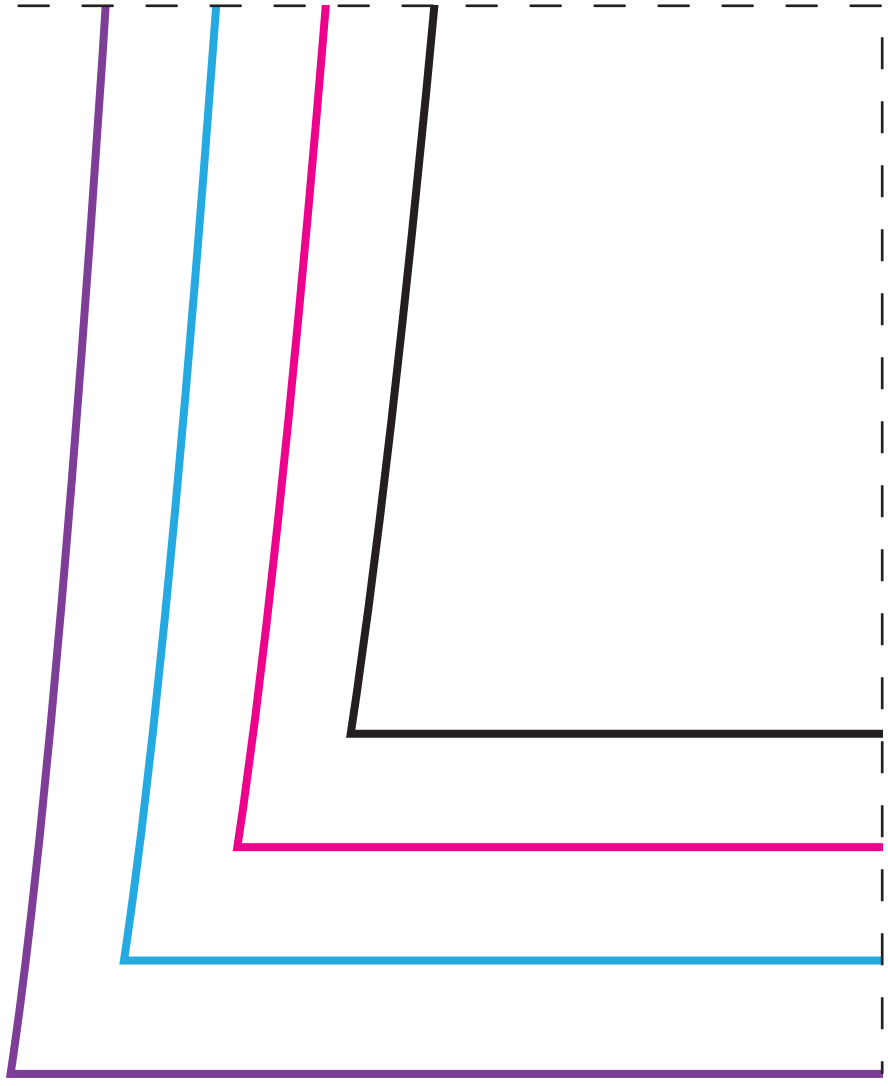
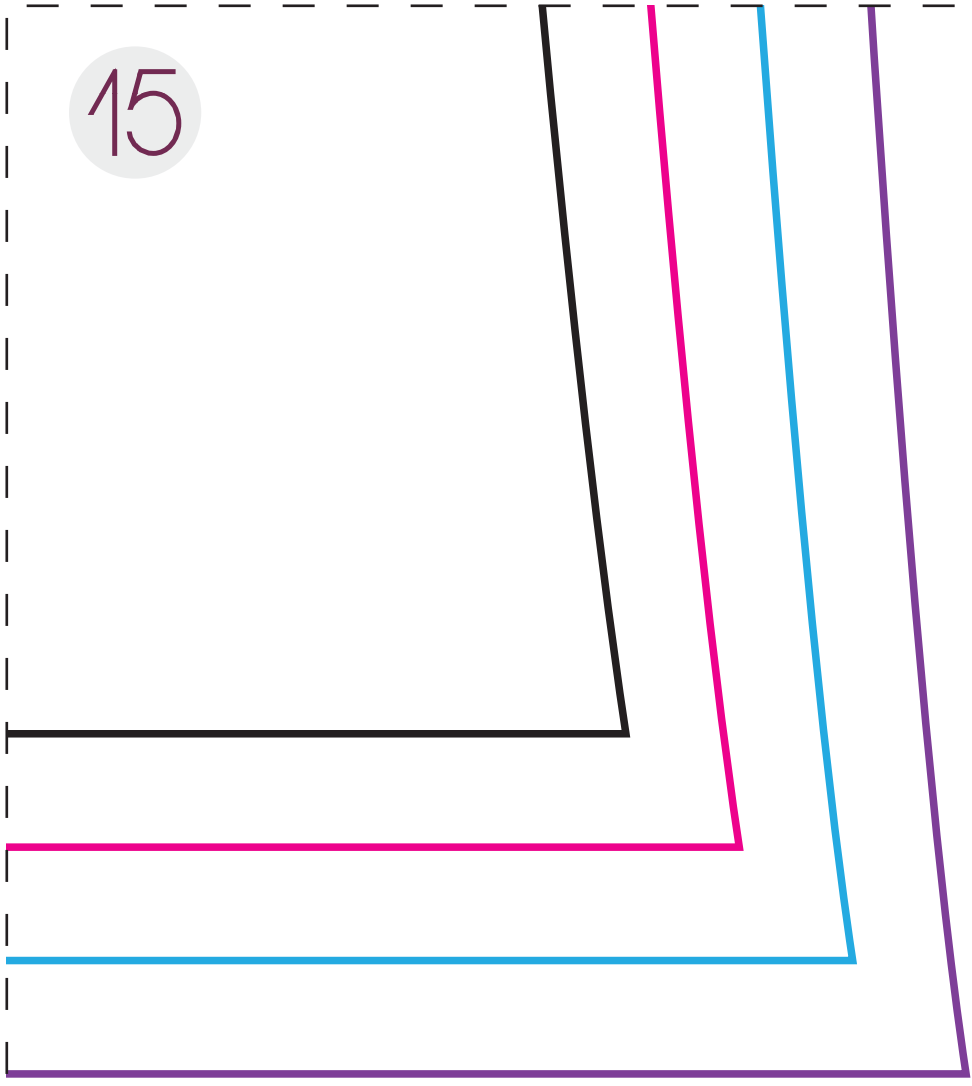


14



A set of four horizontal lines spanning the width of the page, used for writing. From top to bottom, the lines are: a solid black line, a solid magenta line, a solid blue line, and a solid purple line. The top dashed line is positioned above the black line, and the bottom dashed line is positioned below the purple line.

15



16

