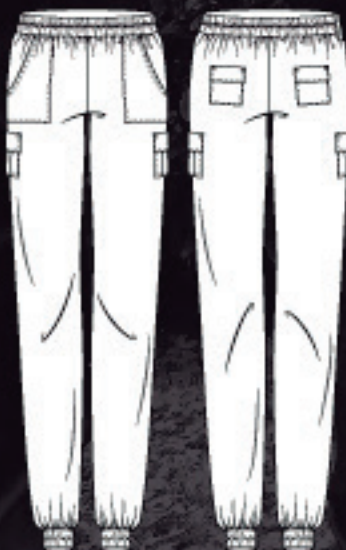




NOCTURNO

DESIGN BLOG

ÚNICAMENTE PARA USO PERSONAL
PANTALÓN CARGO



ESTE MOLDE NO ES PARA USO COMERCIAL.
SI DESEAS UTILIZAR ESTE MOLDE PARA TU MARCA,
PUEDES COMPRAR UNA LICENCIA EN LA TIENDA ONLINE.
APLICAN TÉRMINOS Y CONDICIONES.

ESTE MOLDE ES PROPIEDAD DE NOCTURNO DESIGN BLOG
Y ESTÁ PROHIBIDA SU VENTA O REPRODUCCIÓN



NOCTURNO
DESIGN BLOG

MOLDE PANTALÓN CARGO

IMPORTANTE: El margen decostura de este molde es de 1cm y todas las piezas ya lo traen incluido

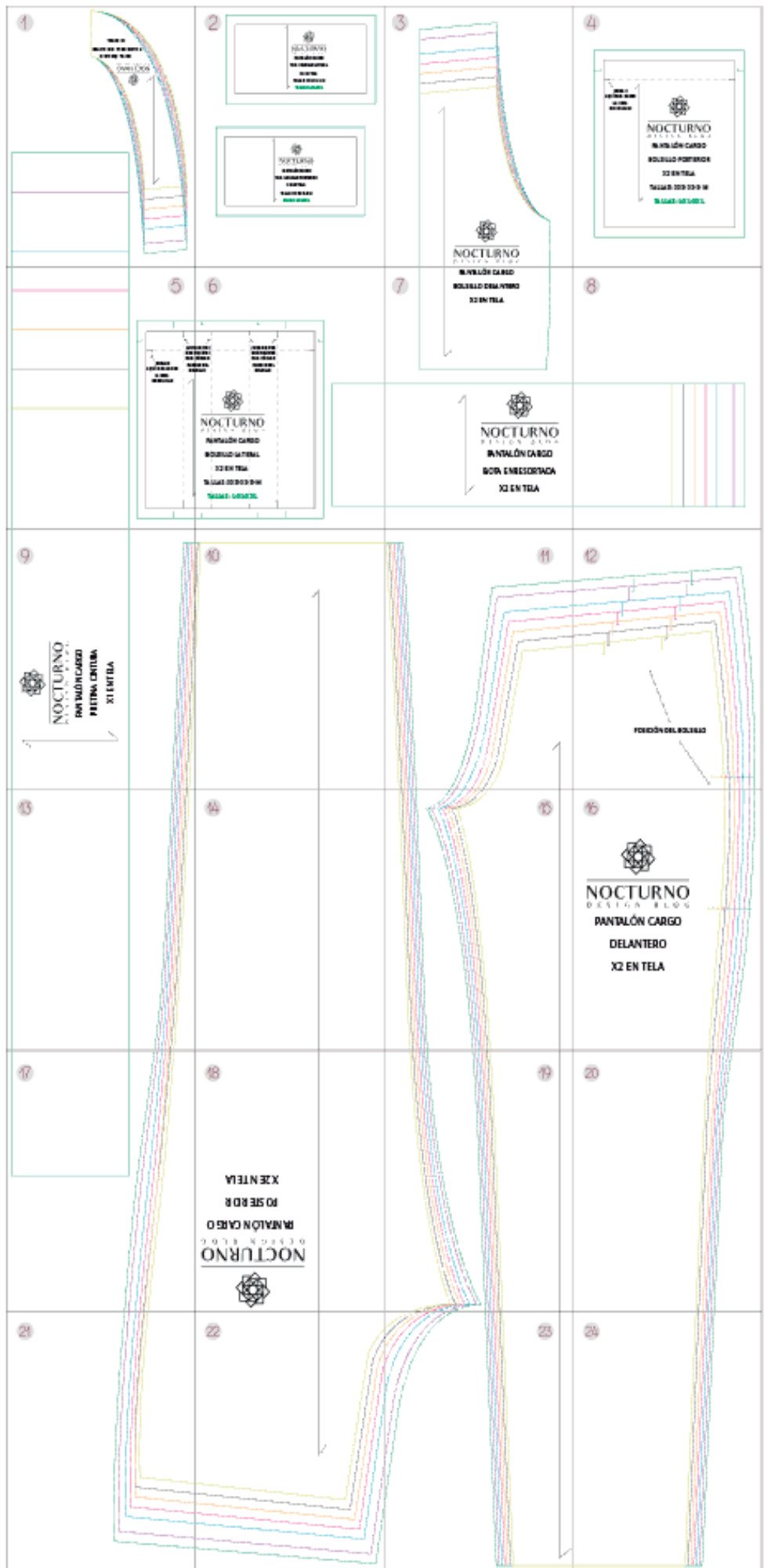
Cómo armar el molde:

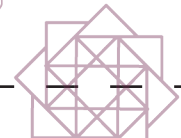
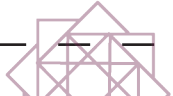
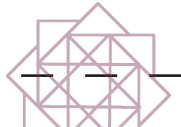
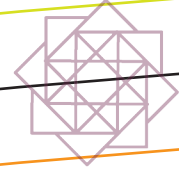
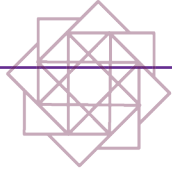
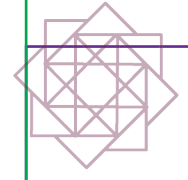
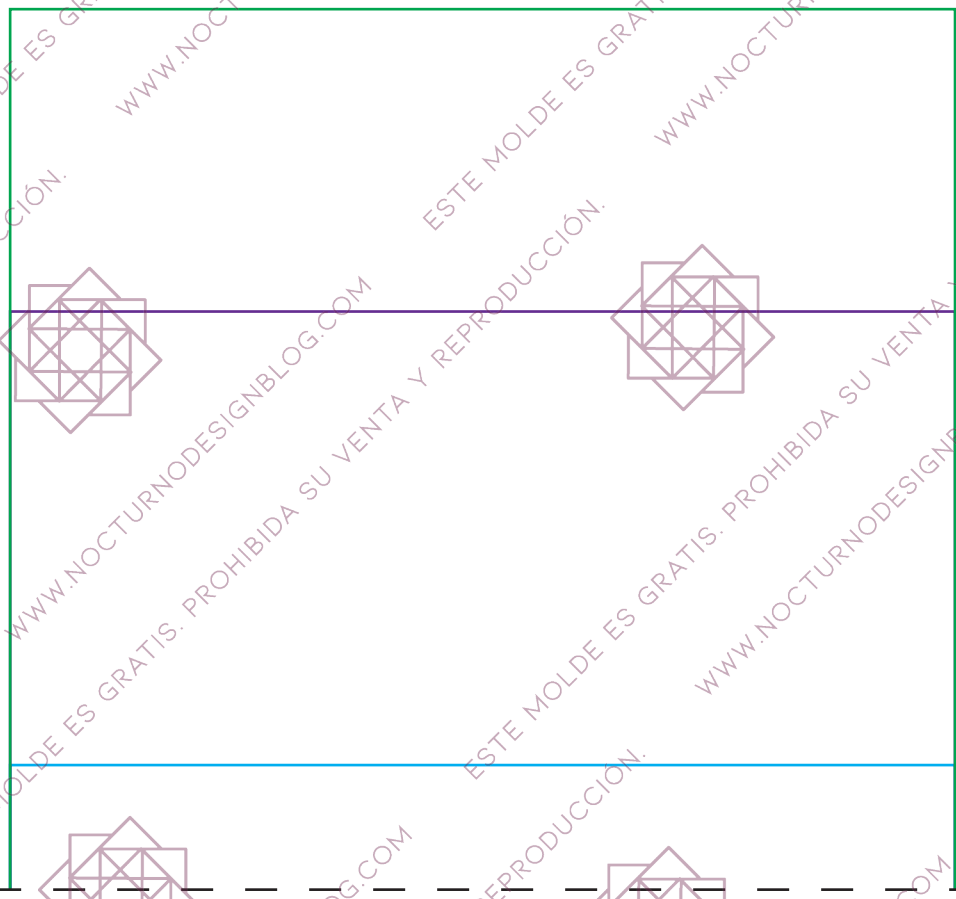
1. Imprime las hojas en **tamaño carta**.
2. Recorta por la línea punteada.
3. Pega las hojas según el diagrama.
4. Utiliza la guía de color para recortar la talla que quieras.

- TALLA XXS
- TALLA XS
- TALLA S
- TALLA M
- TALLA L
- TALLA XL
- TALLA XXL

Tabla de tallas

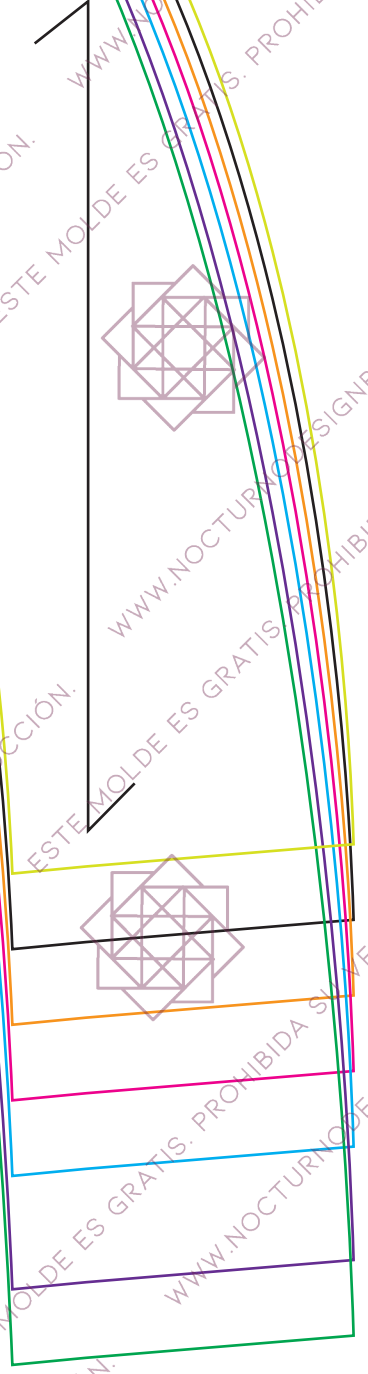
Tallas	Cintura	Cadera	Elastico cintura	Elastico bota
XXS	62 - 65cm	86 - 89cm	62cm	16cm
XS	66 - 69cm	90 - 93cm	66cm	17cm
S	70 - 73cm	94 - 97cm	70cm	18cm
M	74 - 77cm	98 - 101cm	74cm	19cm
L	78 - 81cm	102 - 105cm	78cm	20cm
XL	82 - 87cm	106 - 111cm	84cm	22cm
XXL	88 - 91cm	112 - 115cm	88cm	23cm



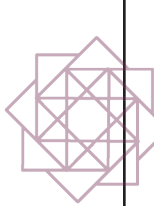


PANTALÓN CARGO
FALSO BOLSILLO DELANTERO
X2 EN TELA

NOCTURNO
DESIGN BLOG



2



NOCTURNO
DESIGN BLOG

PANTALÓN CARGO

TAPA BOLSILLO LATERAL

X4 EN TELA

TALLAS: XXS-XS-S-M

TALLAS: L-XL-XXL



NOCTURNO
DESIGN BLOG

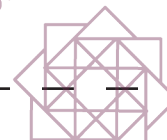
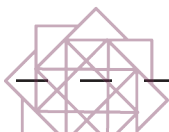
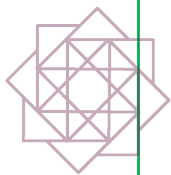
PANTALÓN CARGO

TAPA BOLSILLO POSTERIOR

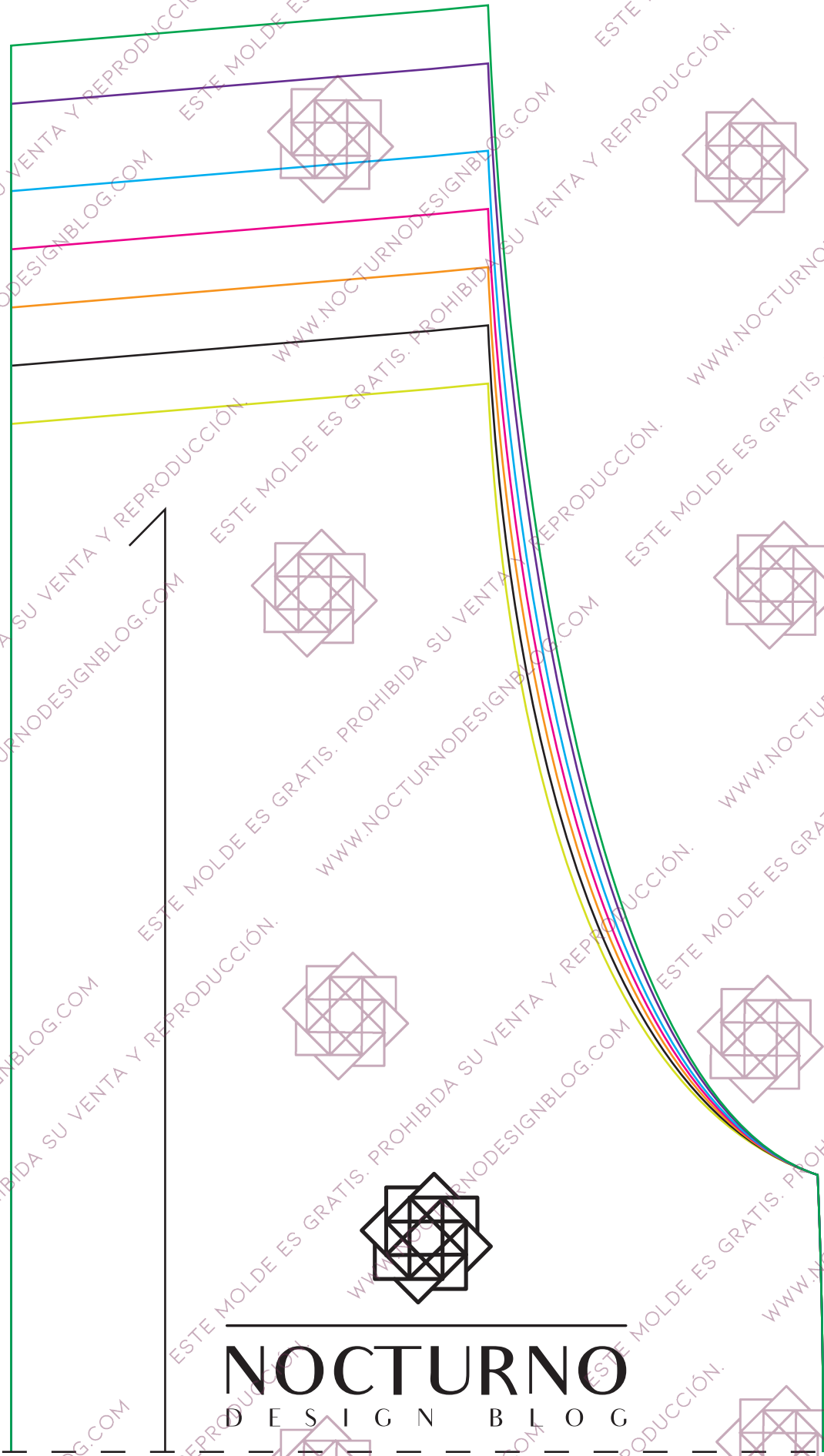
X4 EN TELA

TALLAS: XXS-XS-S-M

TALLAS: L-XL-XXL



3



NOCTURNO
DESIGN BLOG

4

DOBLAR
AQUÍ PARA HACER
LA BOCA
DE BOLSILLO

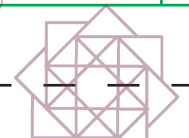
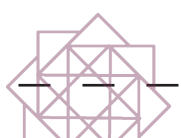
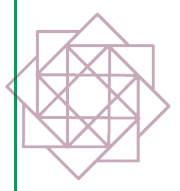
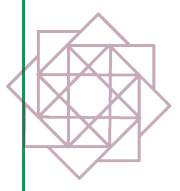

NOCTURNO
DESIGN BLOG

PANTALÓN CARGO
BOLSILLO POSTERIOR
X2 EN TELA

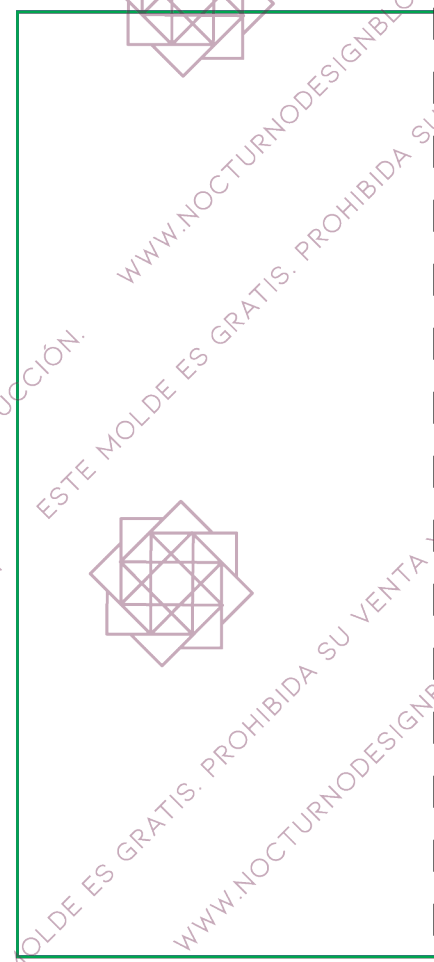
TALLAS: XXS-XS-S-M

TALLAS: L-XL-XXL

5



6



PANTALÓN CARGO

BOLSILLO DELANTERO

X2 EN TELA

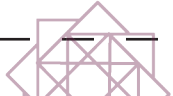
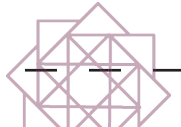
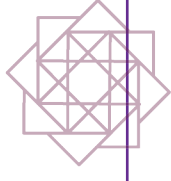
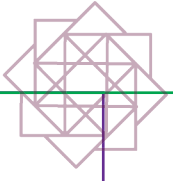
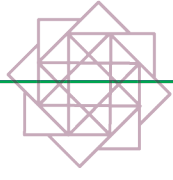
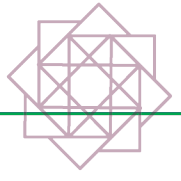
7

NOCTURNO
DESIGN BLOG

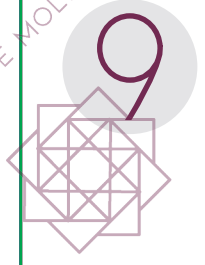
PANTALÓN CARGO

BOTA ENRESORTADA

X2 EN TELA



ESTE MOLDE ES GRATIS. PROHIBIDA SU VENTA Y REPRODUCCIÓN. WWW.NOCTURNODESIGNBLOG.COM



NOCTURNO

DESIGN BLOG

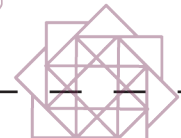
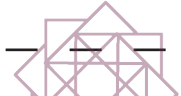
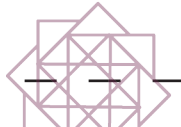
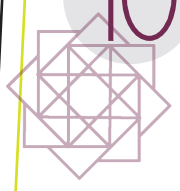
PANTALÓN CARGO

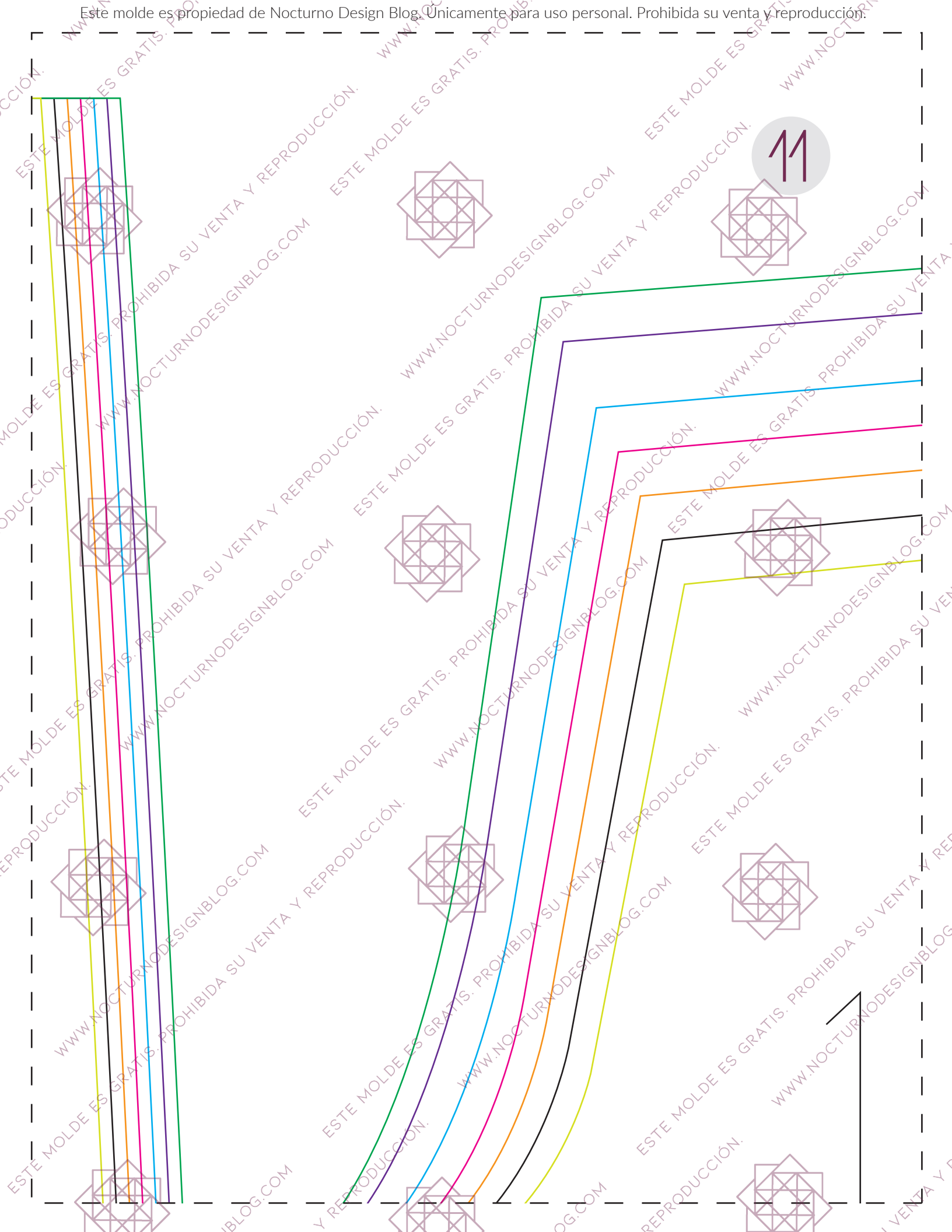
PRETINA CINTURA

X1 EN TELA



10

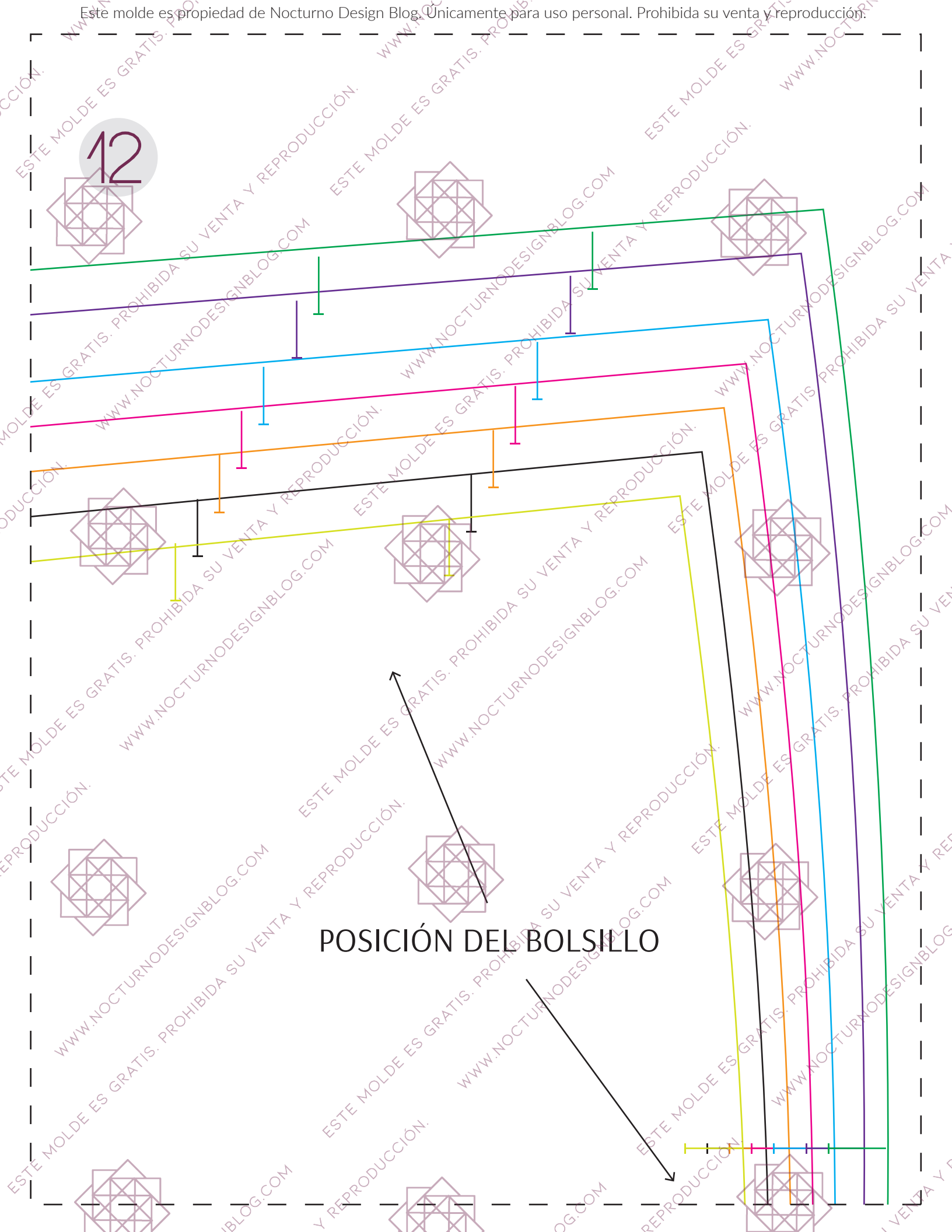




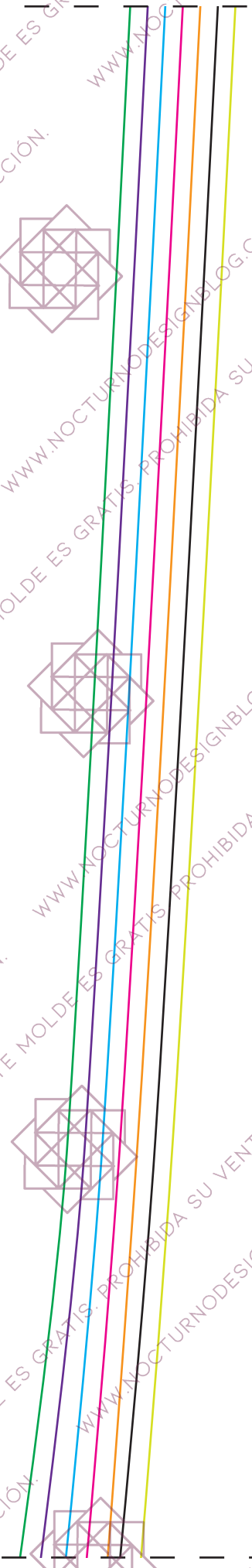
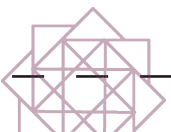
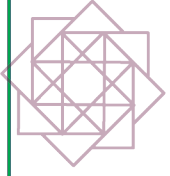
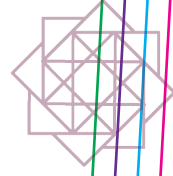
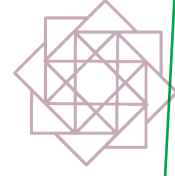
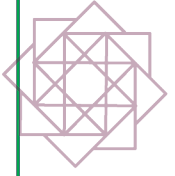
ESTE MOLDE ES GRATIS. PROHIBIDA SU VENTA Y REPRODUCCIÓN. WWW.NOCTURNODESIGNBLOG.COM

12

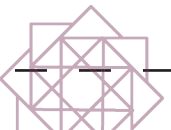
POSICIÓN DEL BOLSILLO

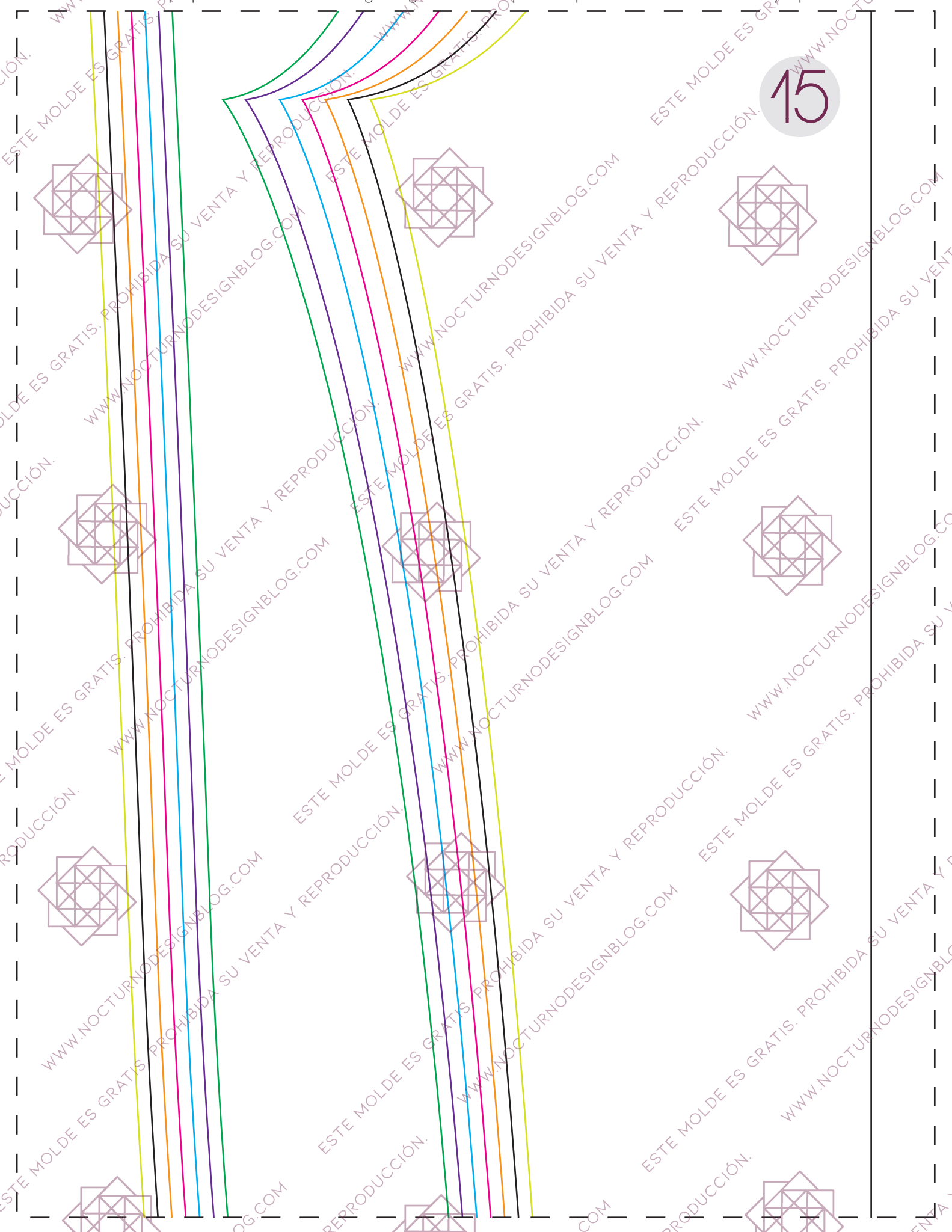
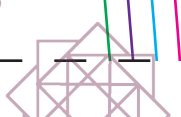
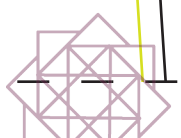
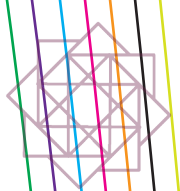
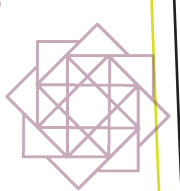
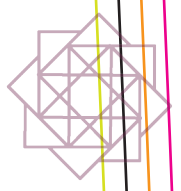
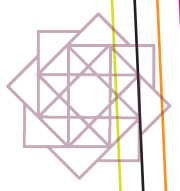


13



14





16



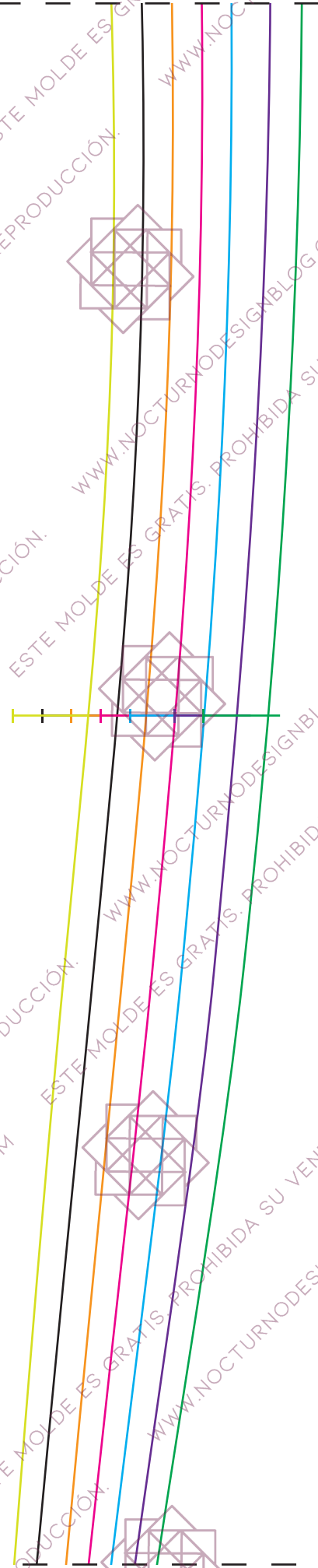
NOCTURNO

D E S I G N B L O G

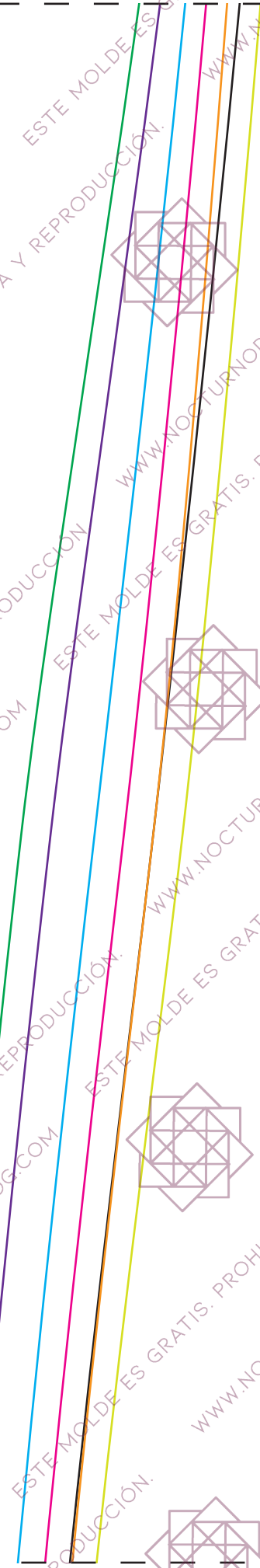
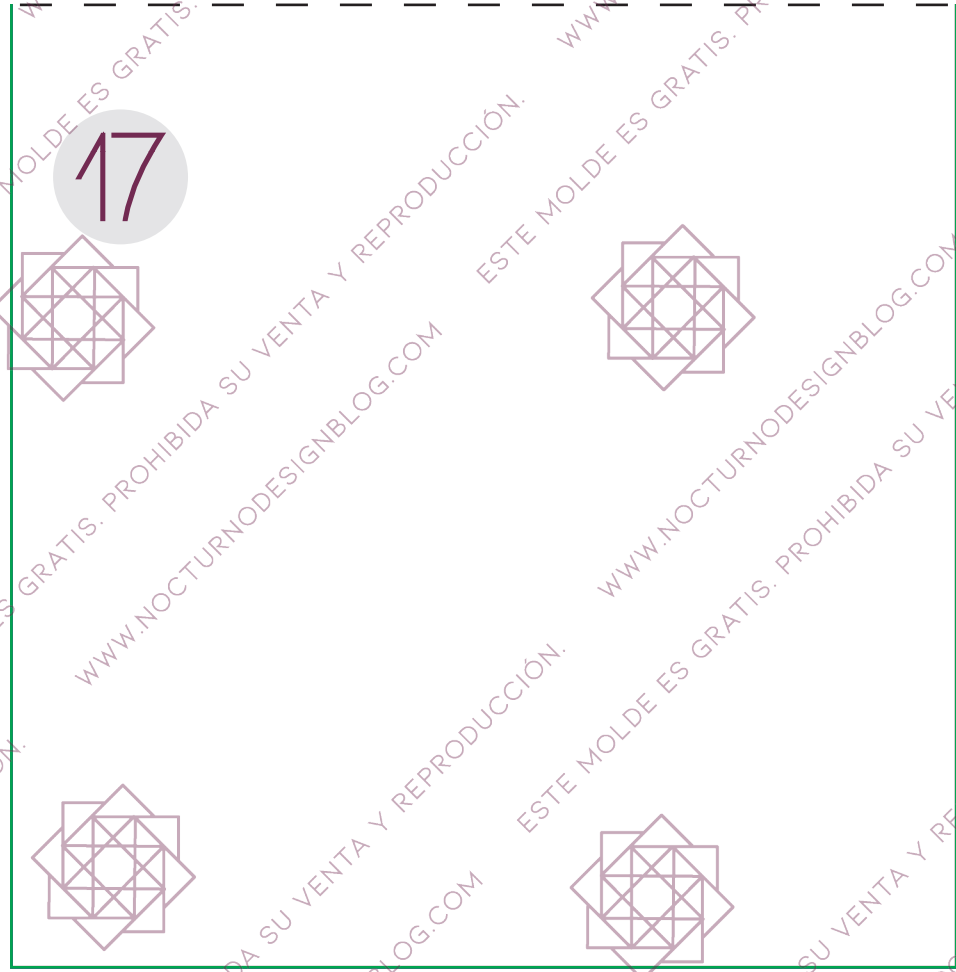
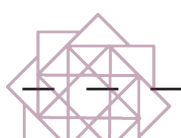
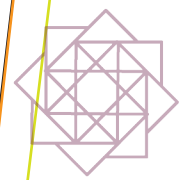
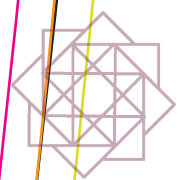
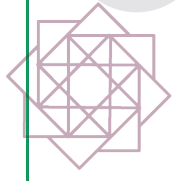
PANTALÓN CARGO

DELANTERO

X2 EN TELA



17



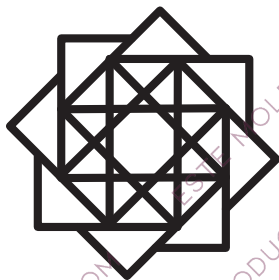
18

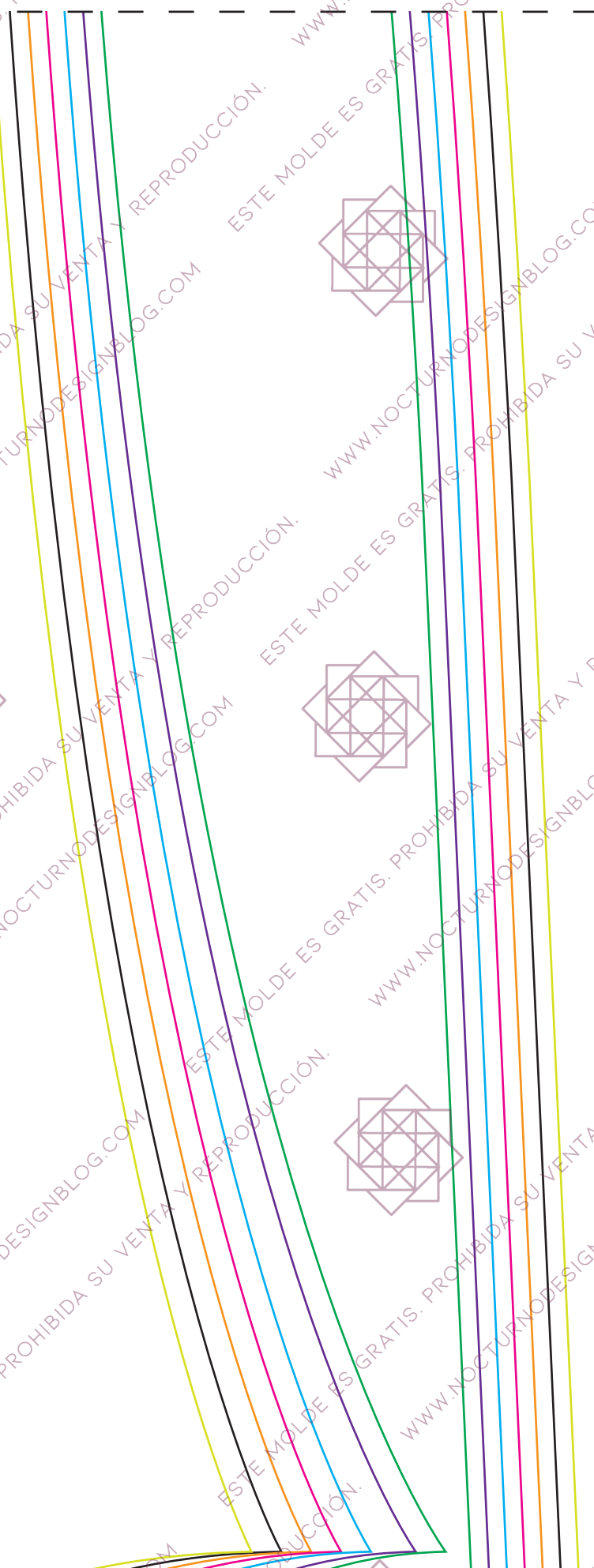
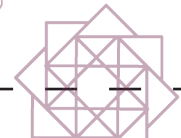
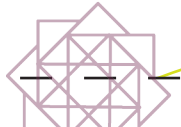
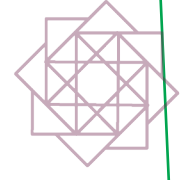
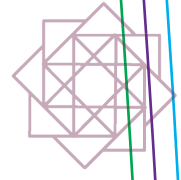


POSTERIOR X2 EN TELA

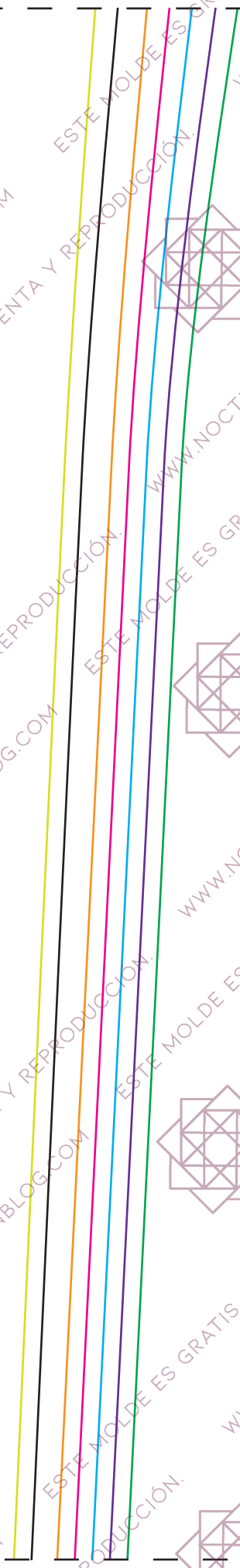
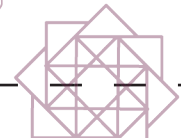
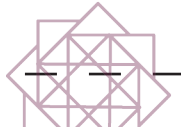
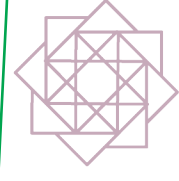
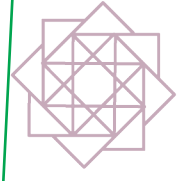
PANTALÓN CARGO

DESIGN
NOCTURNO

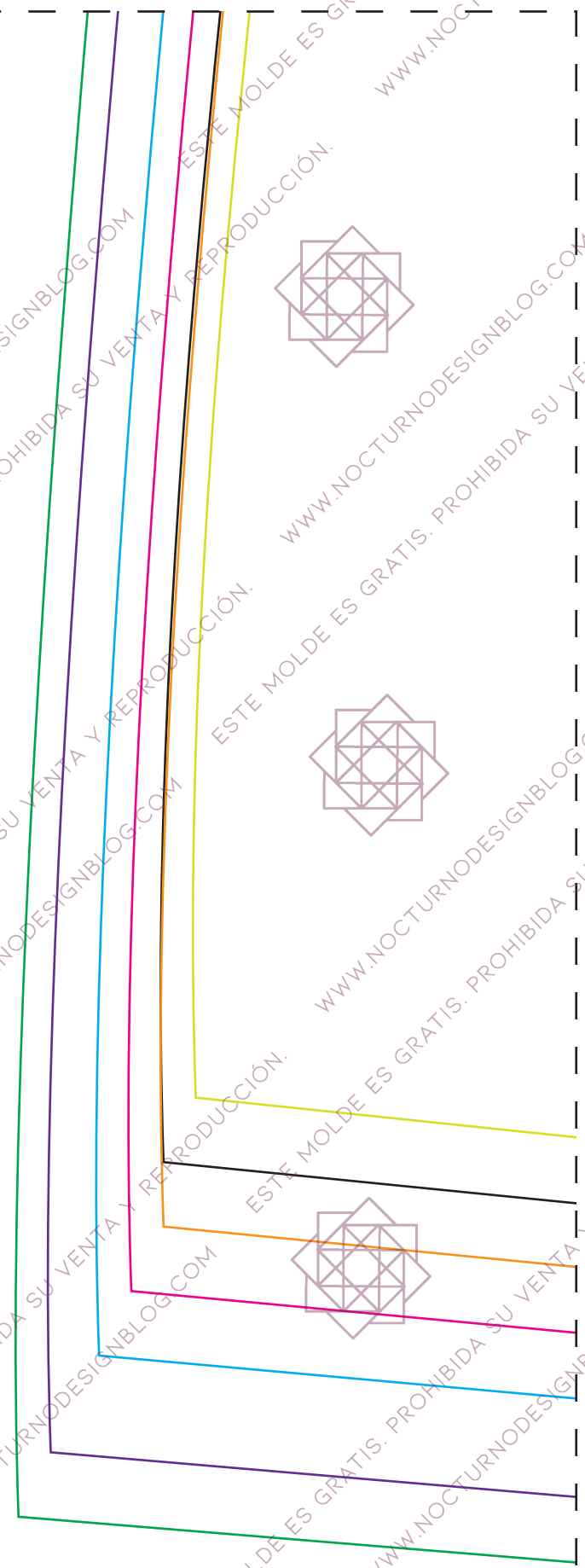
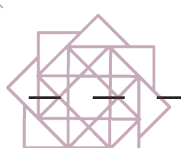
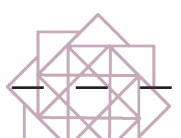




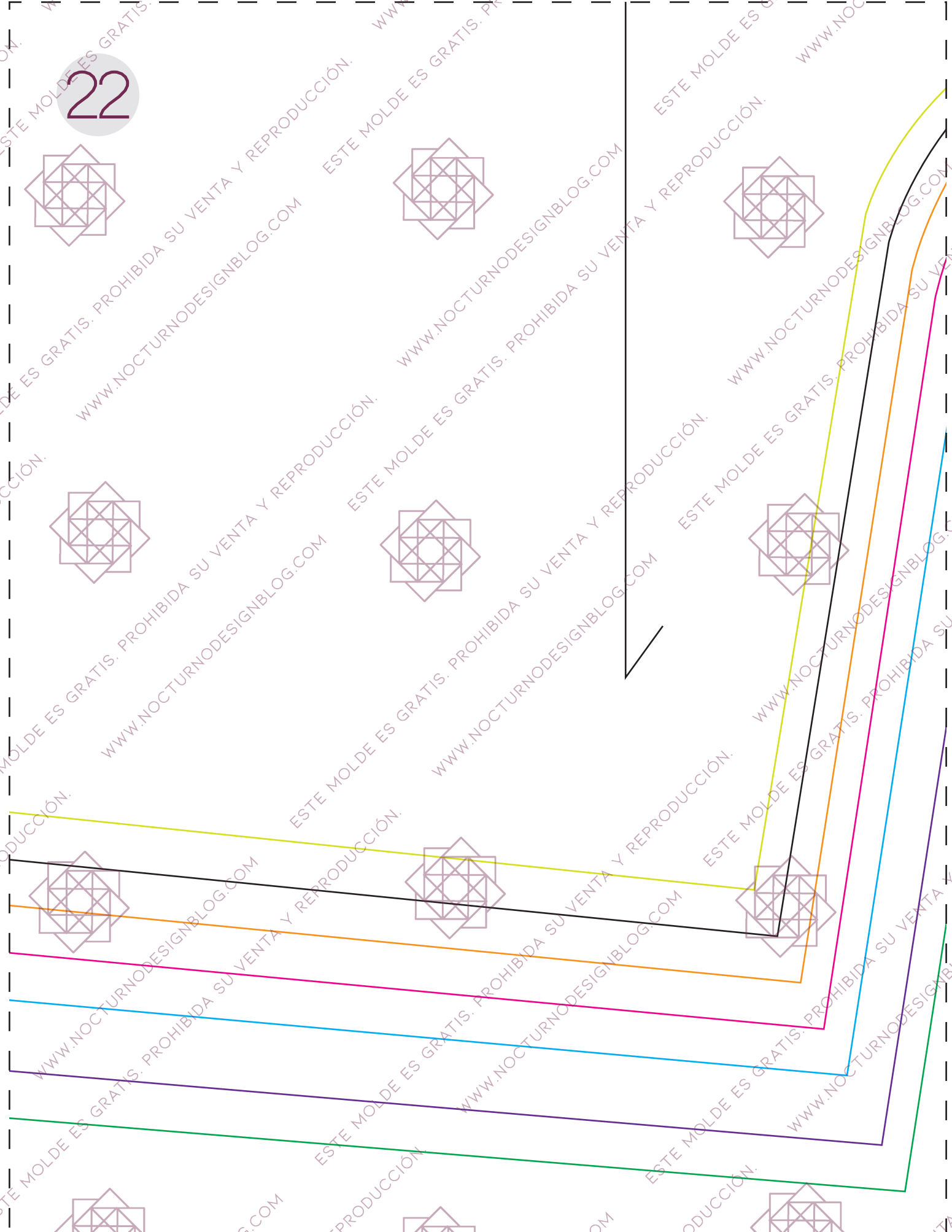
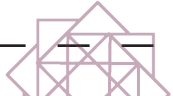
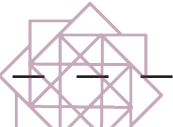
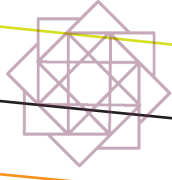
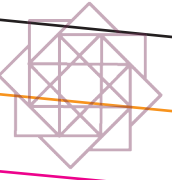
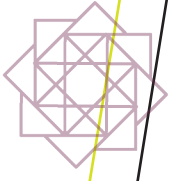
20

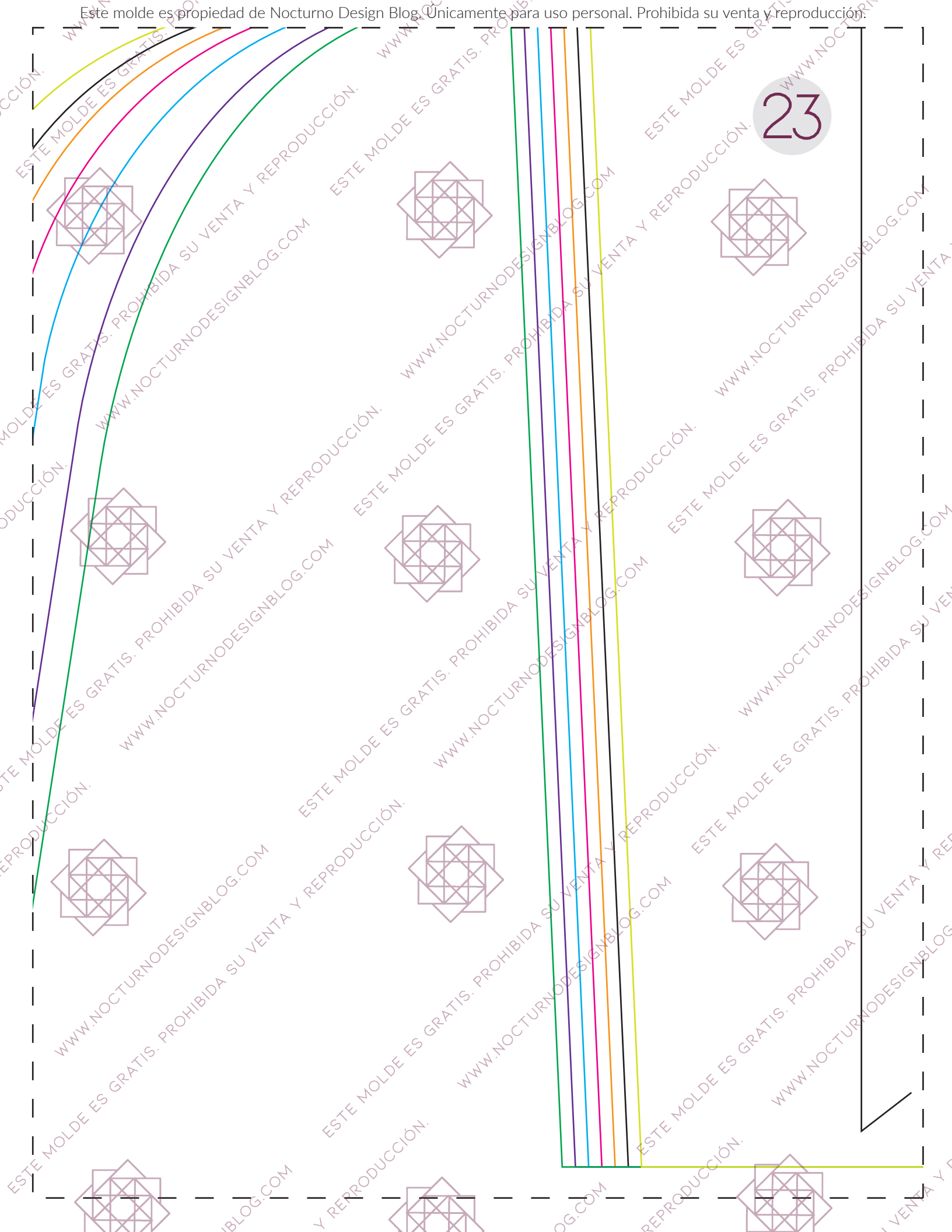


21



22





24

