



---

# NOCTURNO

DESIGN BLOG

ÚNICAMENTE PARA USO PERSONAL  
PANTALÓN TIRO ALTO EN CORDUROY



ESTE MOLDE NO ES PARA USO COMERCIAL.  
SI DESEAS UTILIZAR ESTE MOLDE PARA TU MARCA,  
PUEDES COMPRAR UNA LICENCIA EN LA TIENDA ONLINE.  
APLICAN TÉRMINOS Y CONDICIONES.

ESTE MOLDE ES PROPIEDAD DE NOCTURNO DESIGN BLOG  
Y ESTÁ PROHIBIDA SU VENTA O REPRODUCCIÓN





**NOCTURNO**  
DESIGN BLOG

## MOLDE PANTALÓN TIRO ALTO EN CORDUROY

**IMPORTANTE:** El margen de costura de este molde es de 1cm por todos los bordes y todas las piezas ya lo incluyen.

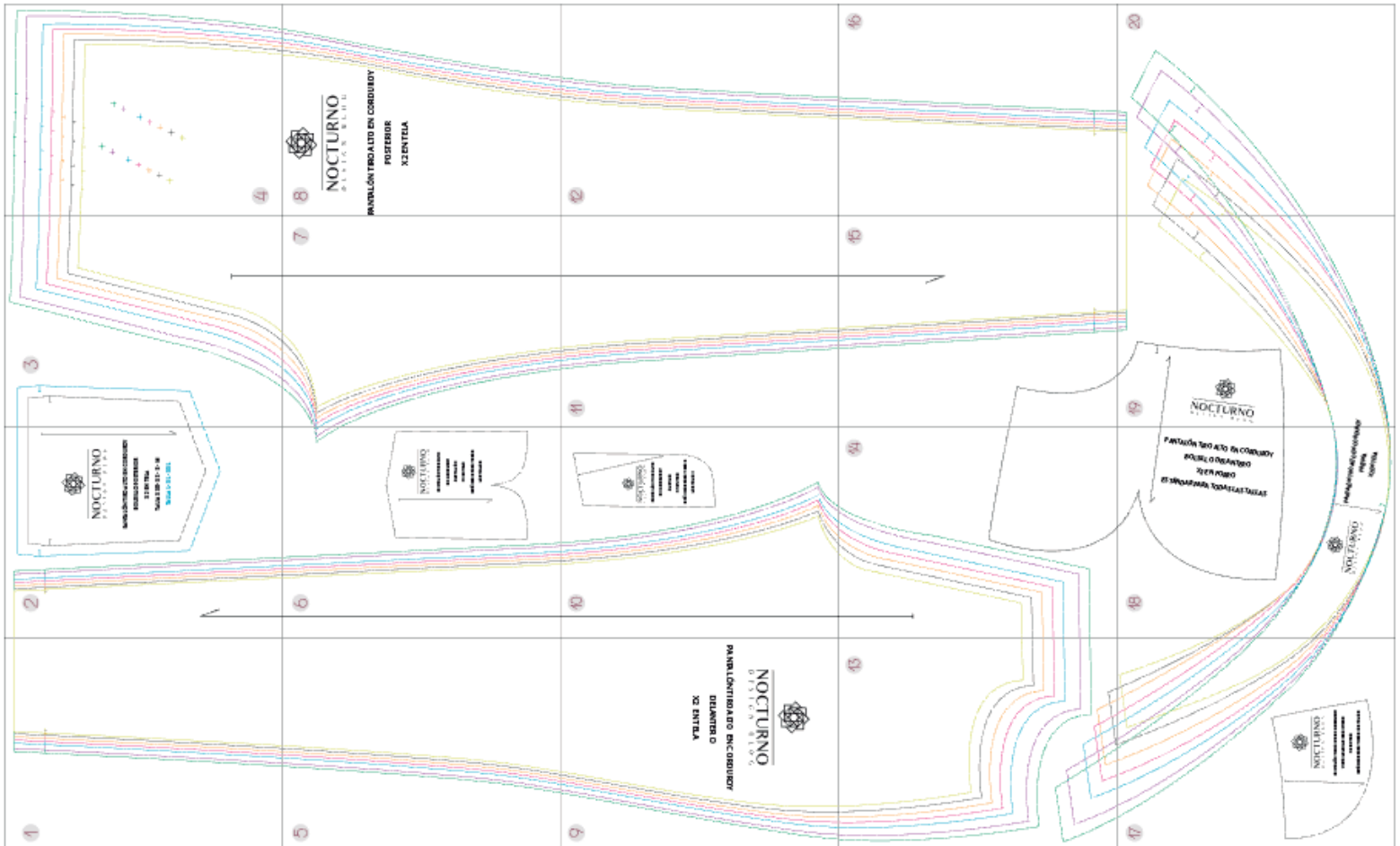
Cómo armar el molde:

1. Imprime las hojas en **tamaño carta**.
2. Recorta por la línea punteada.
3. Pega las hojas según el diagrama.
4. Utiliza la guía de color para recortar la talla que quieras.

- TALLA XXS
- TALLA XS
- TALLA S
- TALLA M
- TALLA L
- TALLA XL
- TALLA XXL

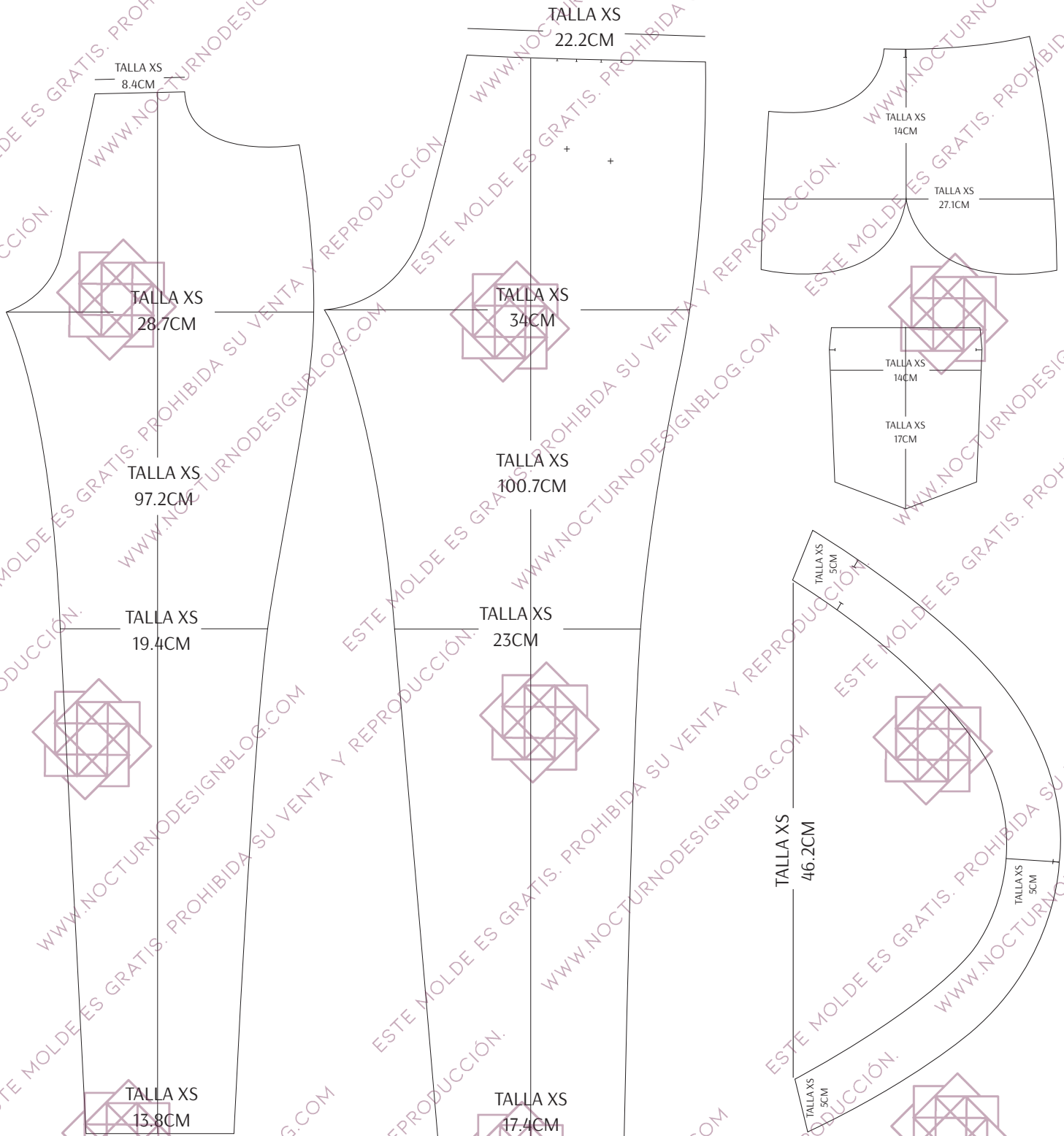
Tabla de tallas

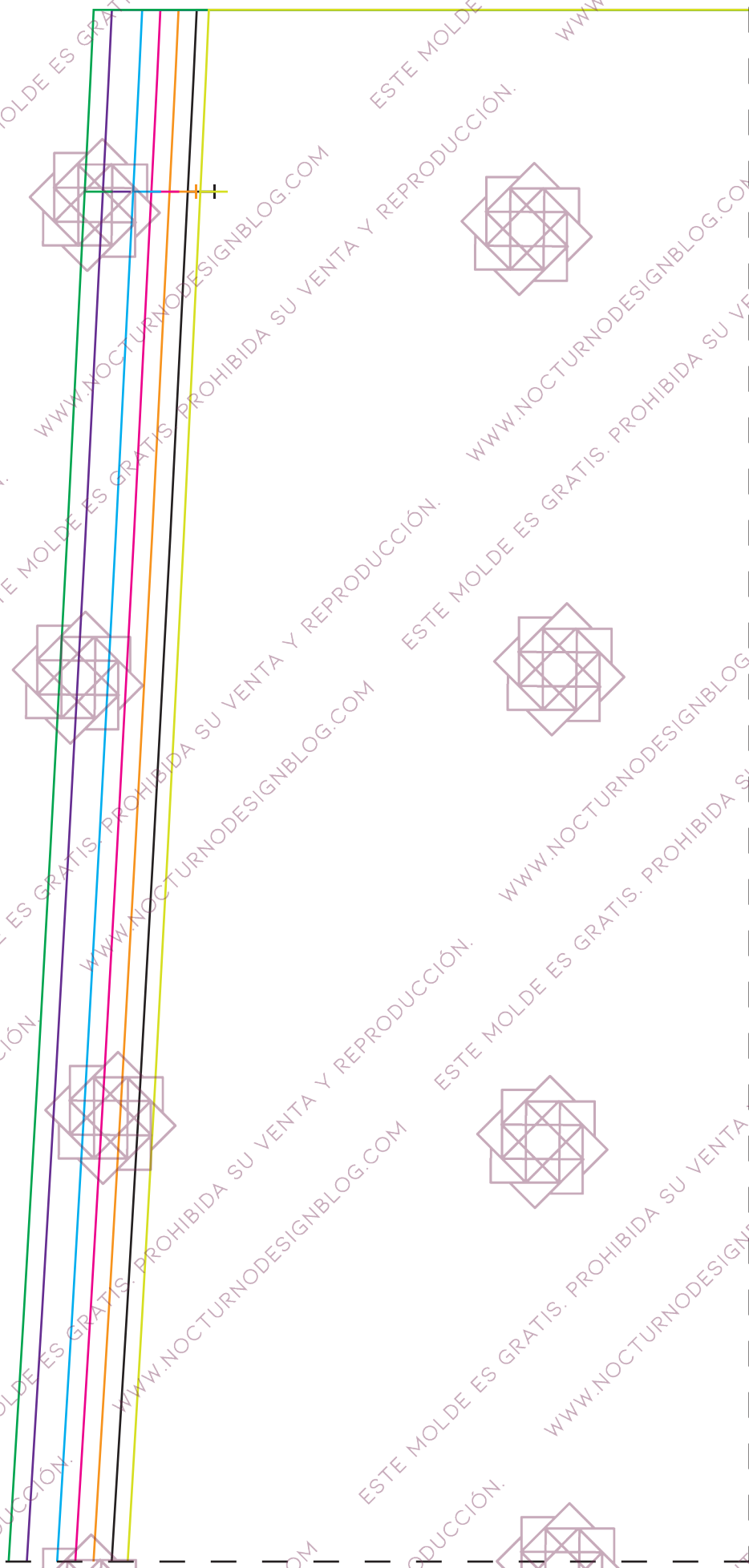
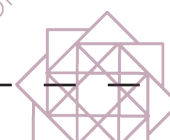
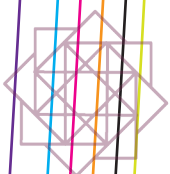
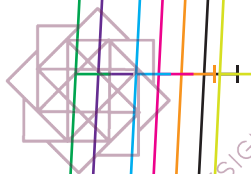
| Tallas | Cintura   | Cadera      |
|--------|-----------|-------------|
| XXS    | 62 - 65cm | 86 - 89cm   |
| XS     | 66 - 69cm | 90 - 93cm   |
| S      | 70 - 73cm | 94 - 97cm   |
| M      | 74 - 77cm | 98 - 101cm  |
| L      | 78 - 81cm | 102 - 105cm |
| XL     | 82 - 87cm | 106 - 111cm |
| XXL    | 88 - 91cm | 112 - 115cm |



# ¿CÓMO SE QUE IMPRIMÍ BIEN EL MOLDE?

Una vez que imprimas el molde, puedes verificar las medidas de éste para saber que si quedó bien impreso. Debes imprimir el molde en tamaño real, en hoja CARTA. Si las medidas coinciden, entonces quedó bien impreso. Si no, debes verificar el formato de impresión. Las medidas de la talla XS son las siguientes:





2

**NOCTURNO**  
DESIGN BLOG

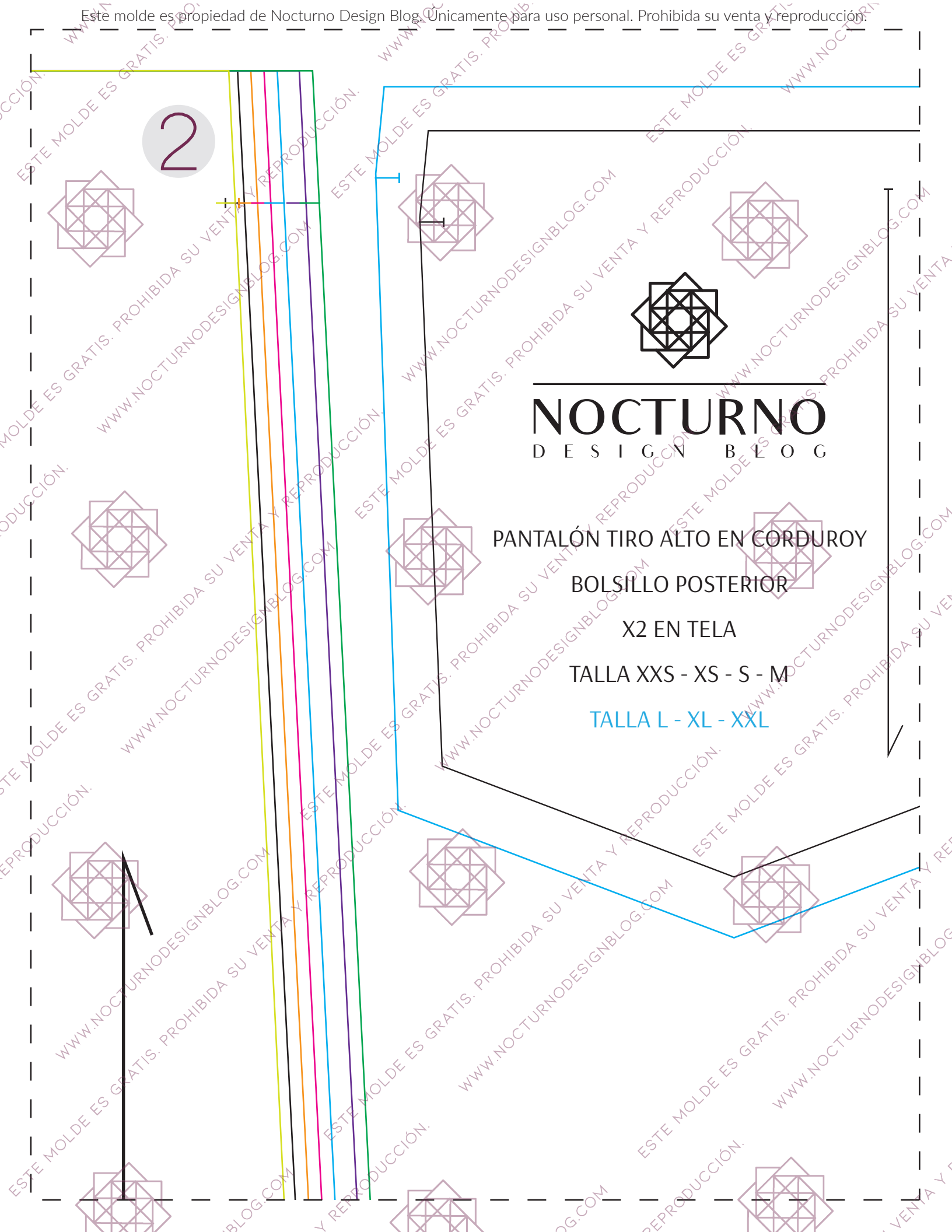
PANTALÓN TIRO ALTO EN CORDUROY

BOLSILLO POSTERIOR

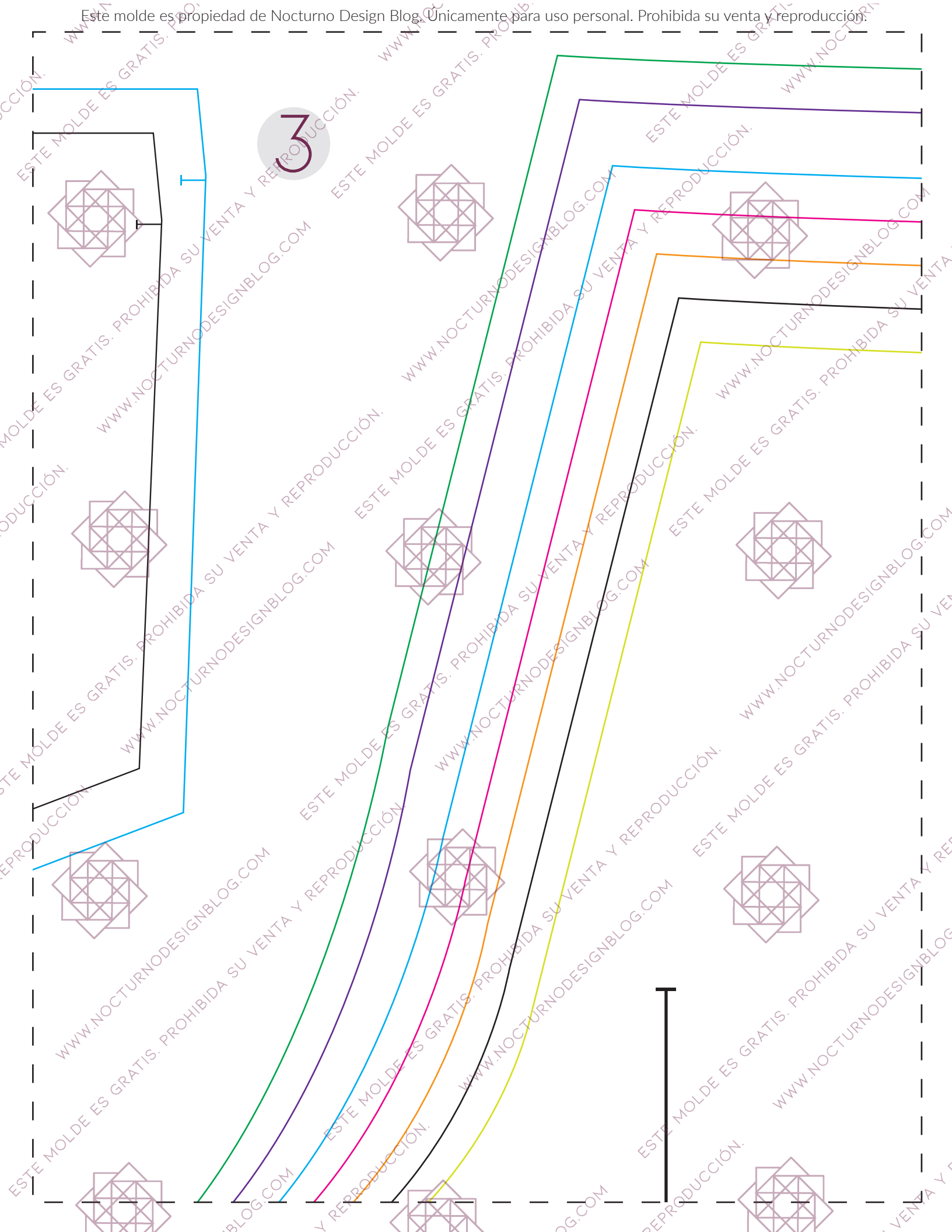
X2 EN TELA

TALLA XXS - XS - S - M

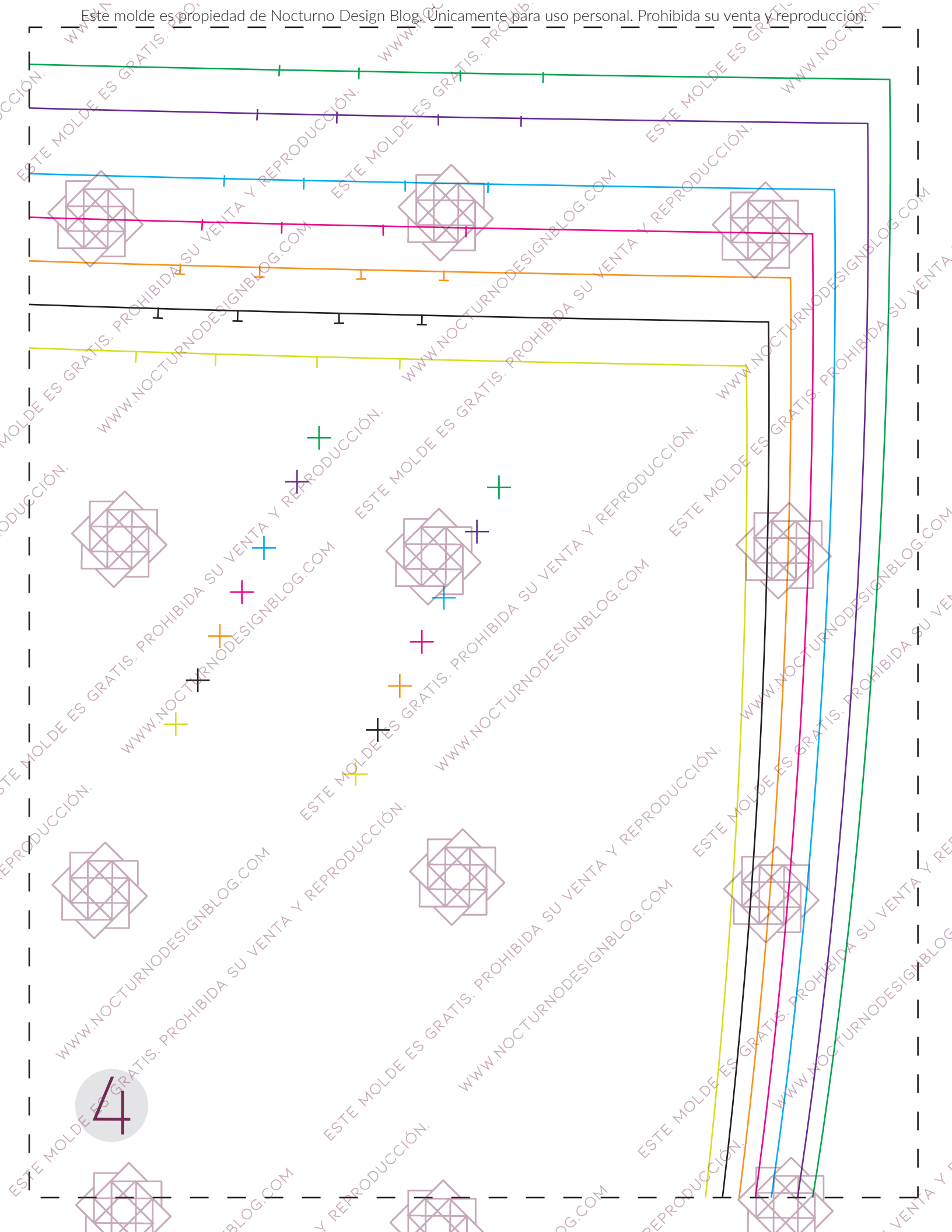
TALLA L - XL - XXL



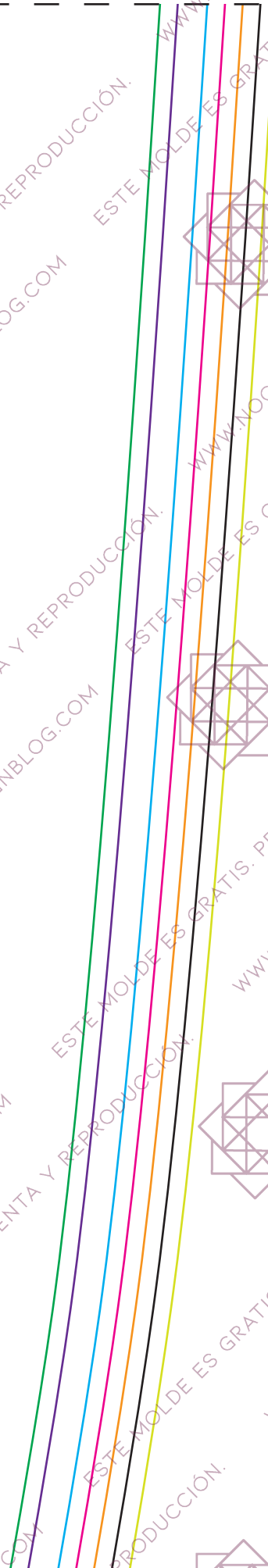
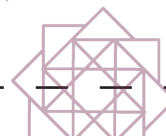
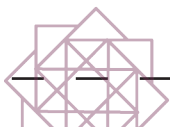
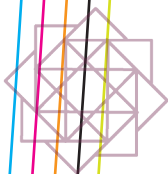
3





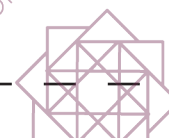
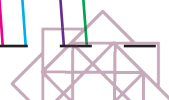
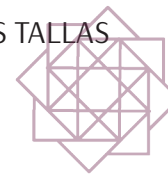
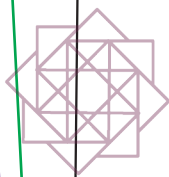
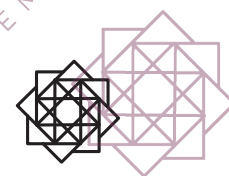
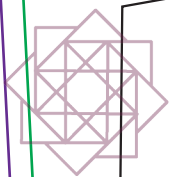
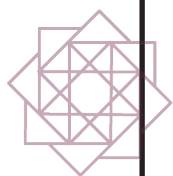


5





6



**NOCTURNO**  
DESIGN BLOG

PANTALÓN TIRO ALTO

EN CORDUROY

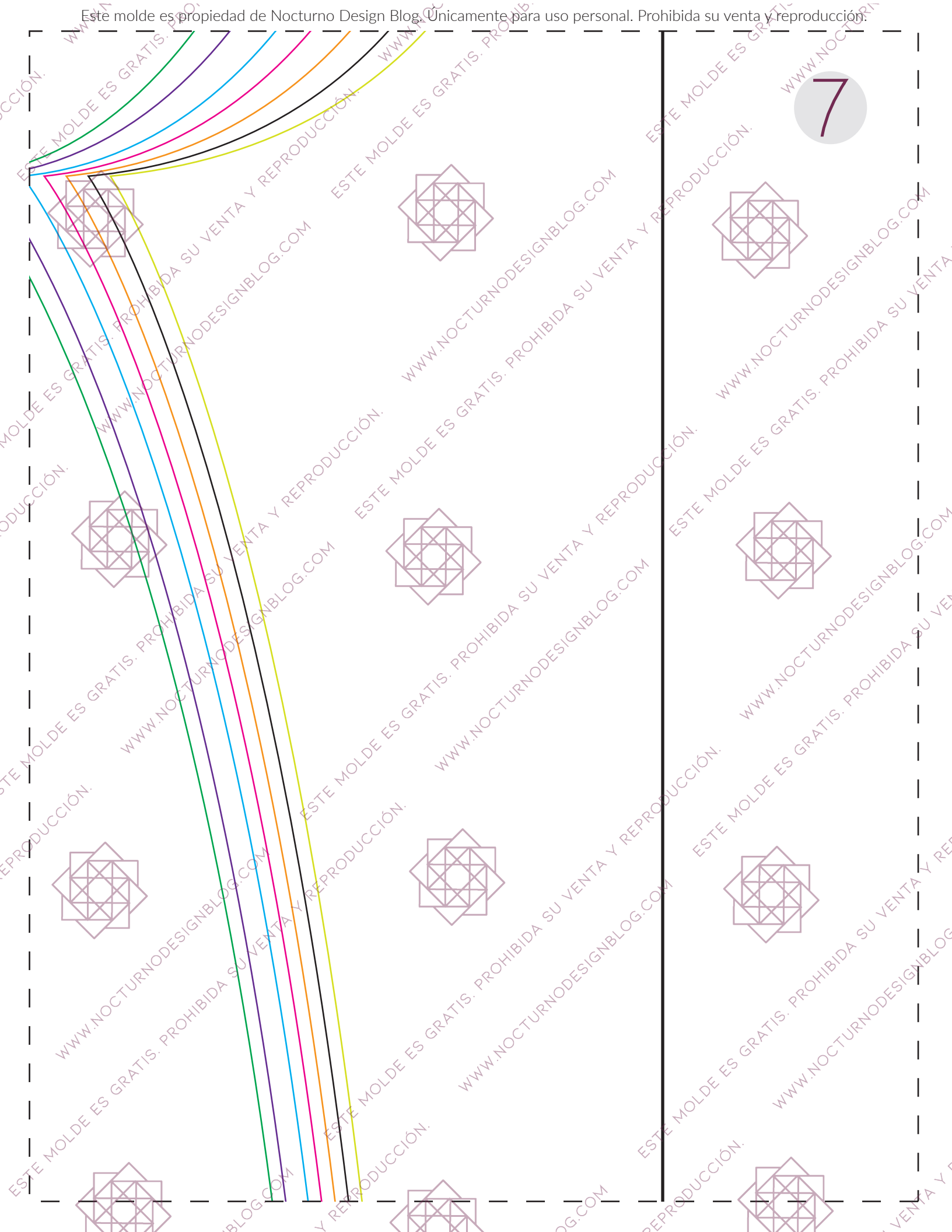
ALETILLÓN

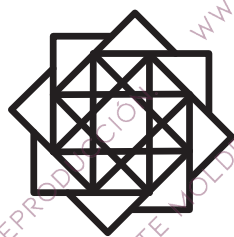
X1 EN TELA

ESTÁNDAR PARA TODAS

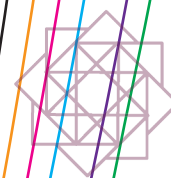
LAS TALLAS

7





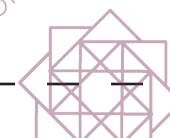
**NOCTURNO**  
DESIGN BLOG



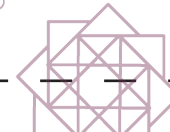
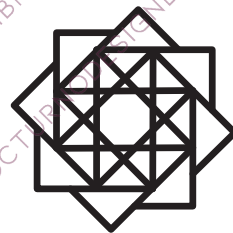
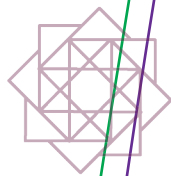
# PANTALÓN TIRO ALTO EN CORDUROY

## POSTERIOR

### X2 EN TELA







PANTALÓN TIRO ALTO EN CORDUROY  
DELANTERO  
X2 EN TELA

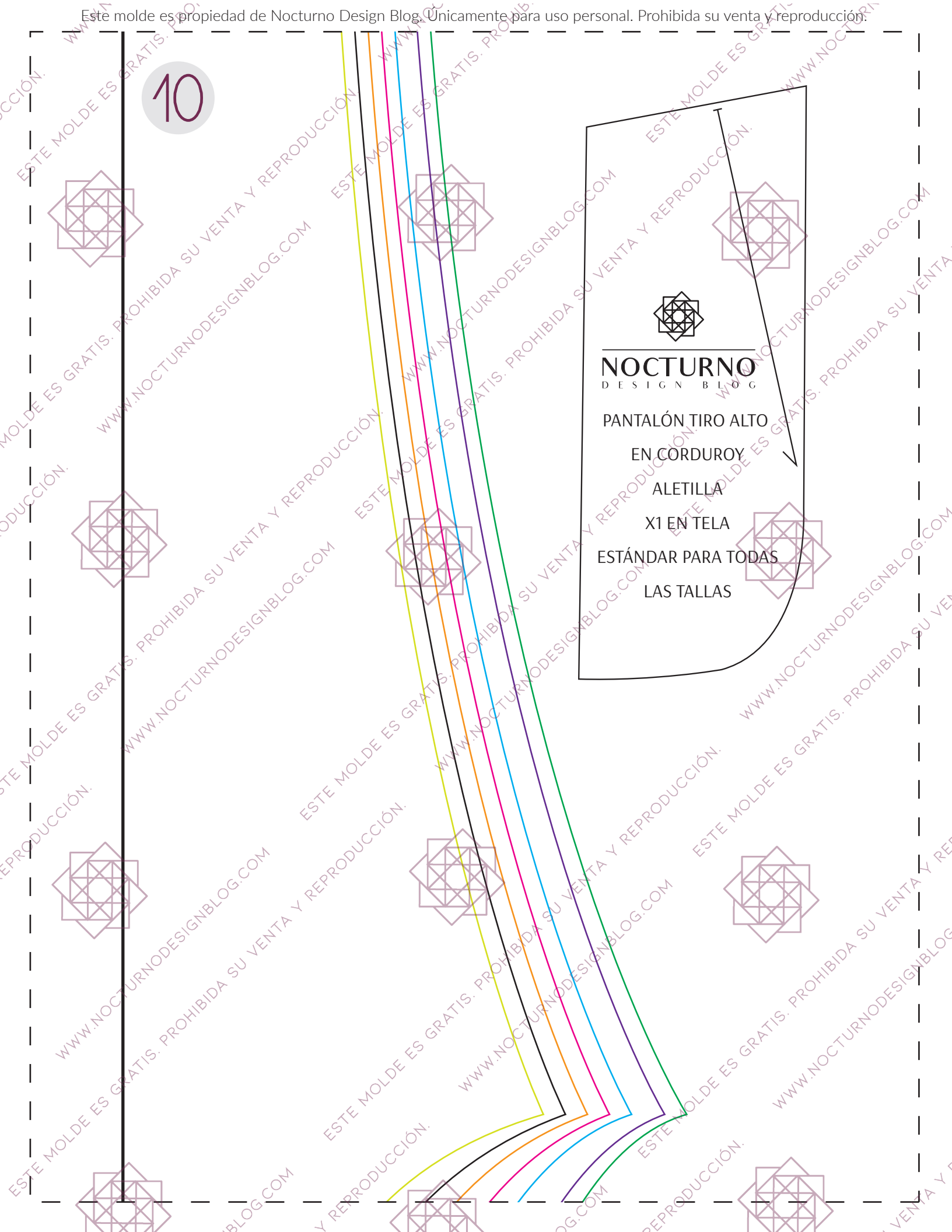
NOCTURNO  
DESIGN  
BLOG

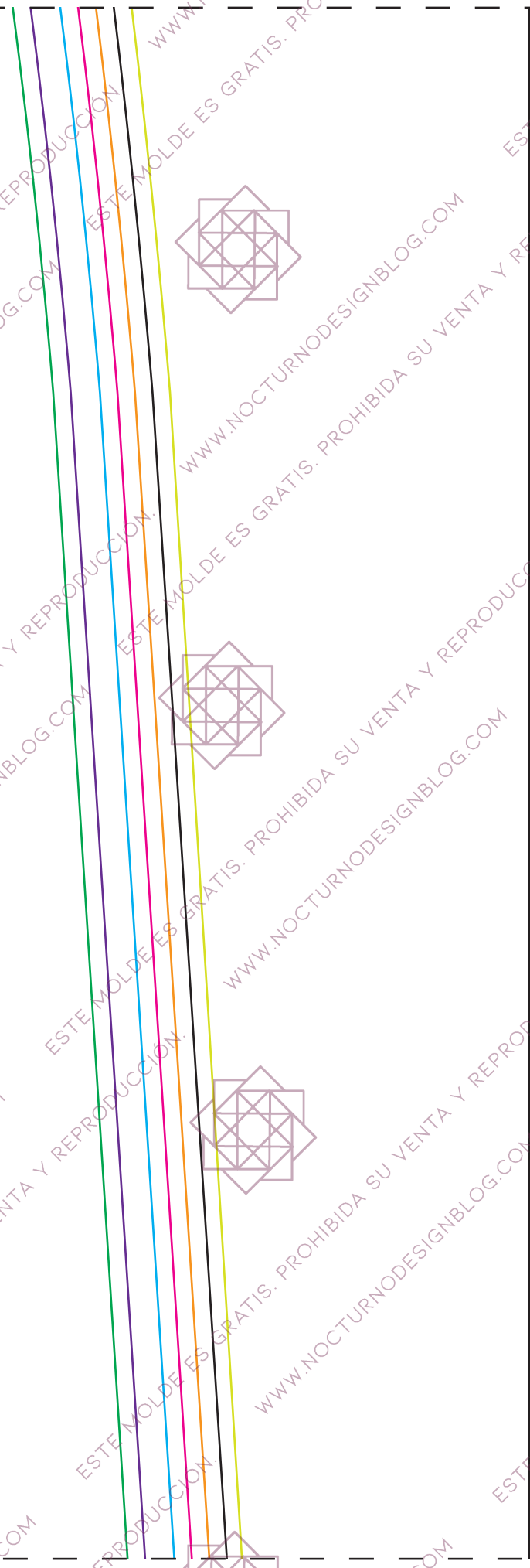
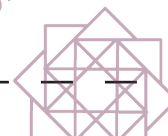
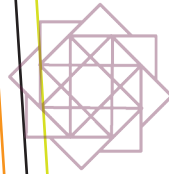
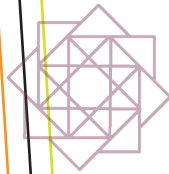
10



**NOCTURNO**  
DESIGN BLOG

PANTALÓN TIRO ALTO  
EN CORDUROY  
ALETILLA  
X1 EN TELA  
ESTÁNDAR PARA TODAS  
LAS TALLAS



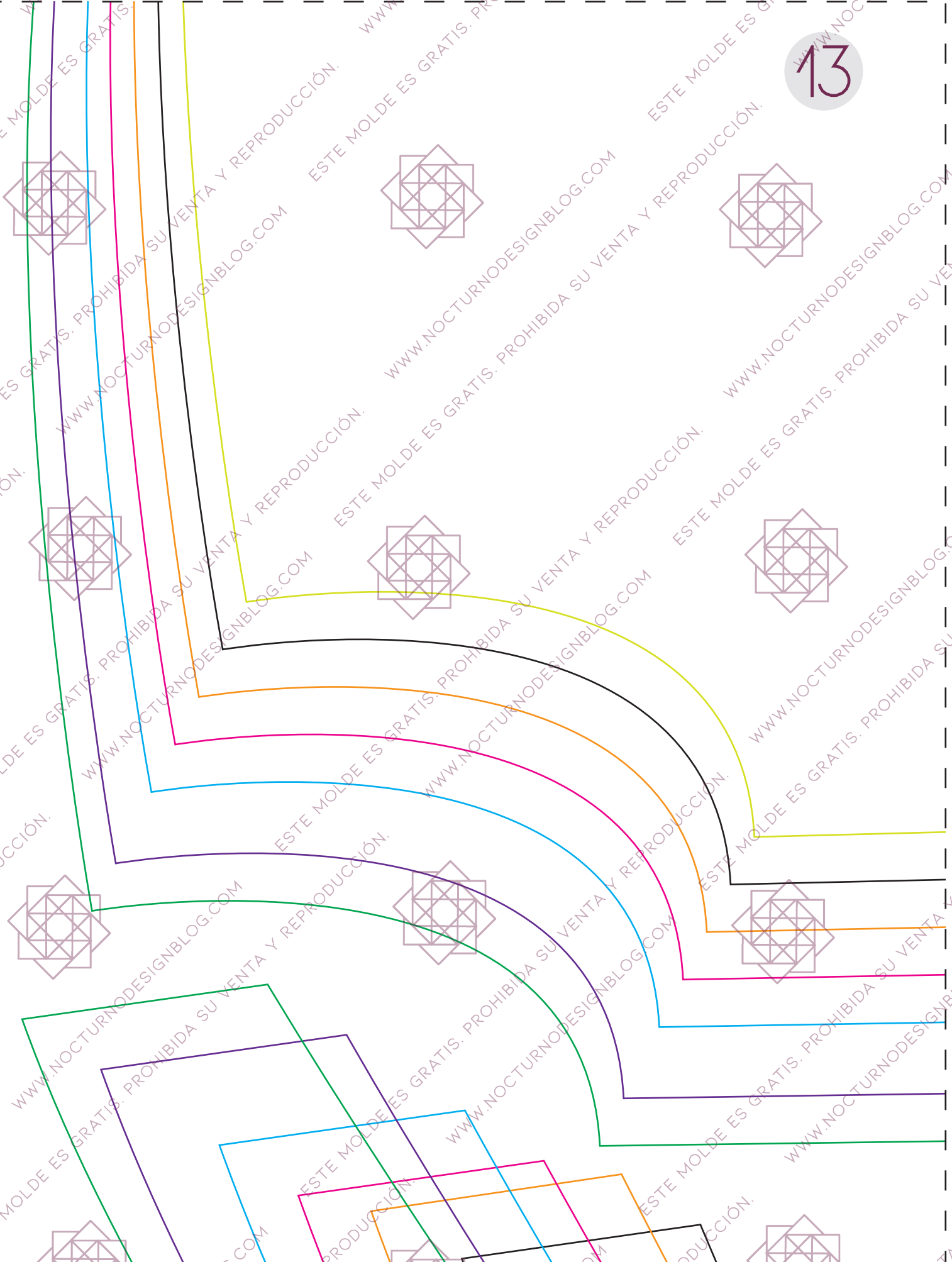
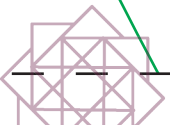
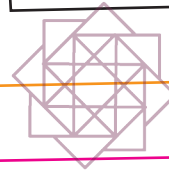
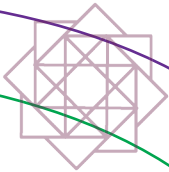
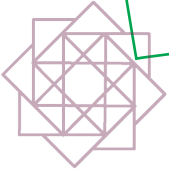
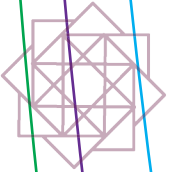
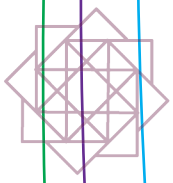


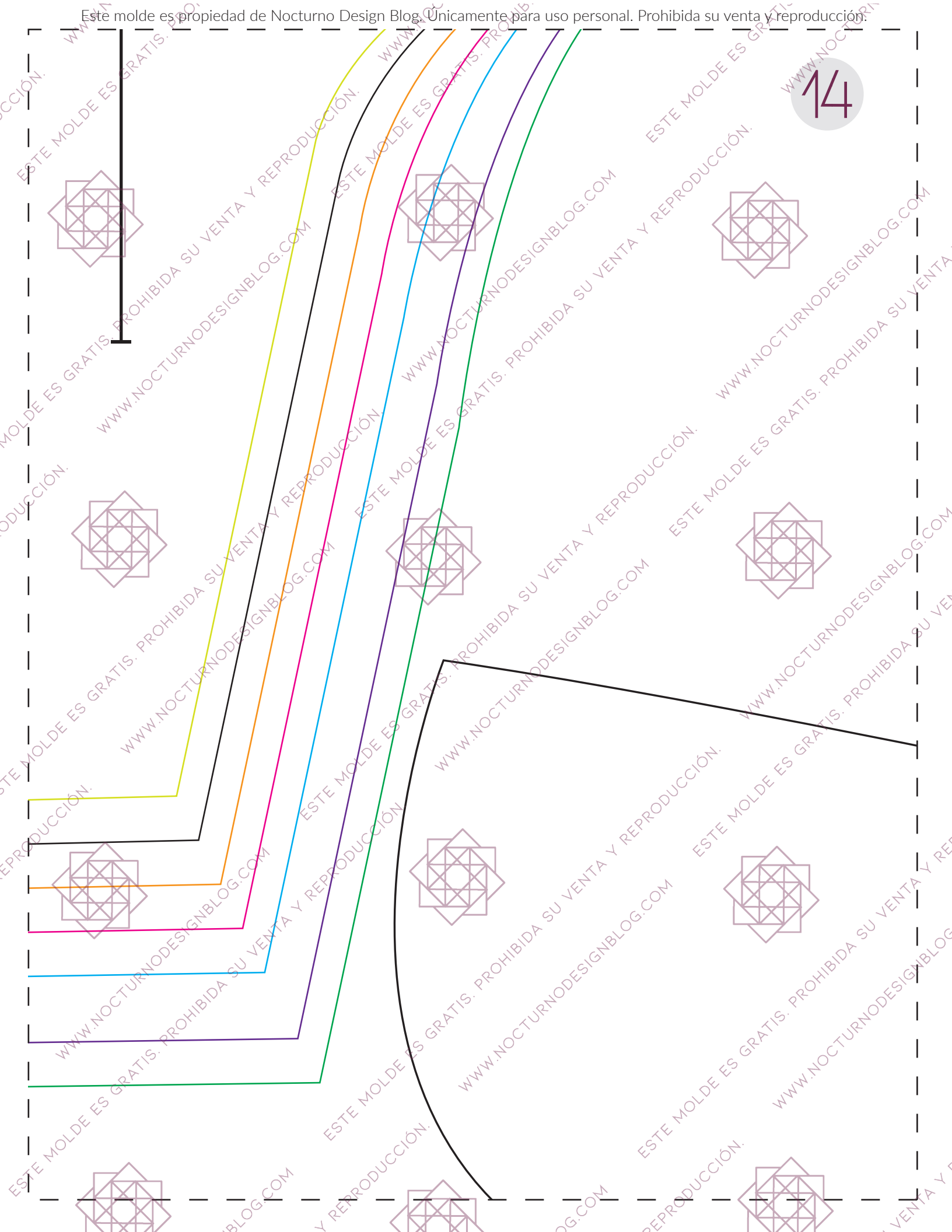
ESTE MOLDE ES GRATIS. PROHIBIDA SU VENTA Y REPRODUCCIÓN. WWW.NOCTURNODESIGNBLOG.COM



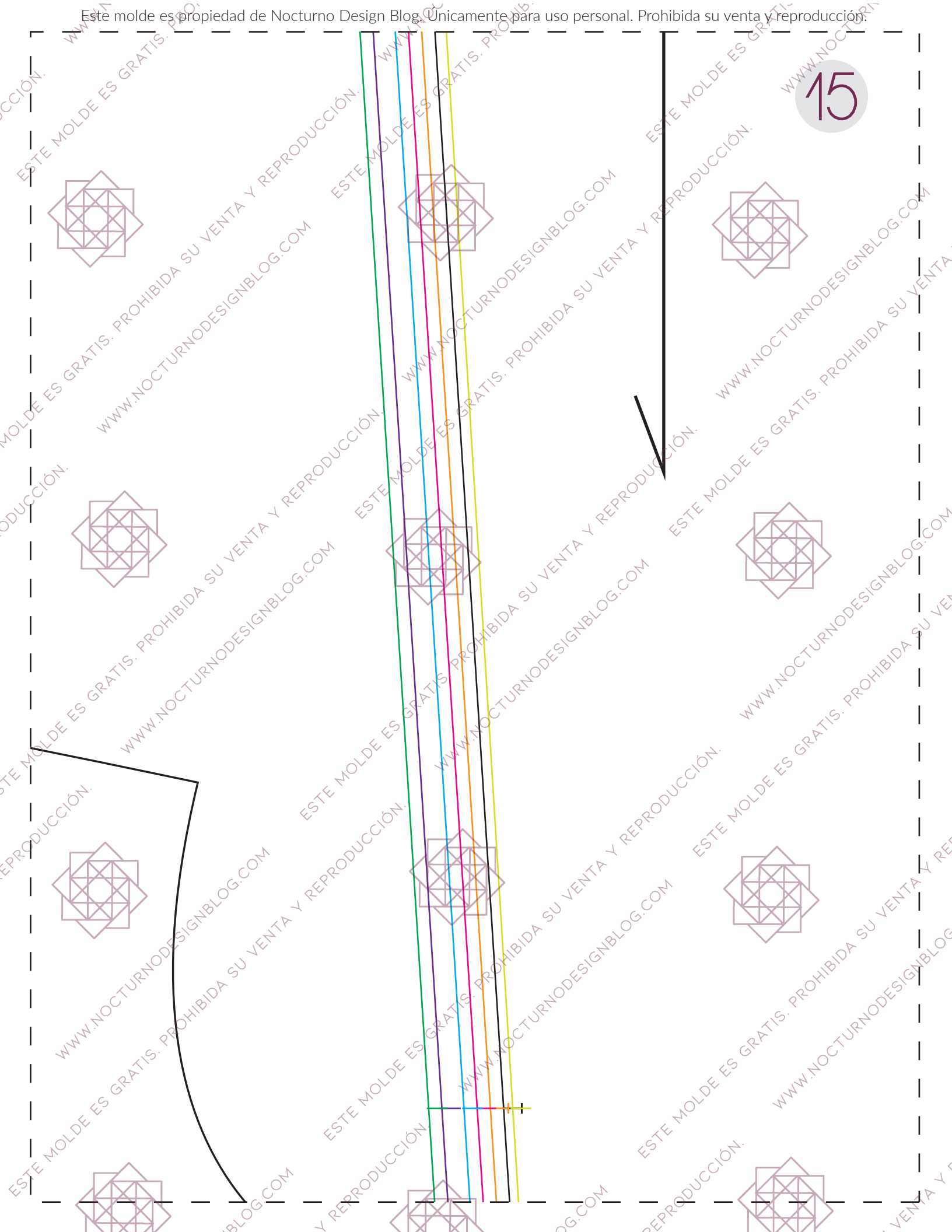
12

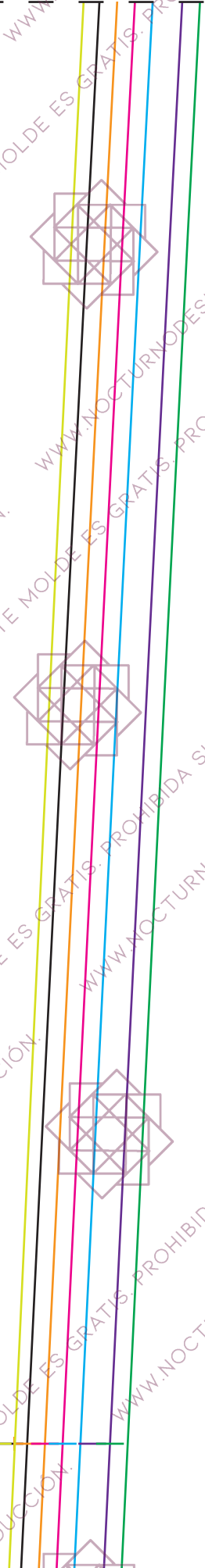
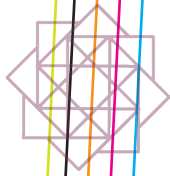
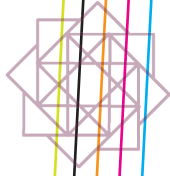




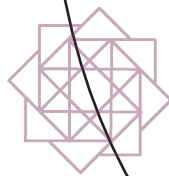








17



**NOCTURNO**  
DESIGN BLOG

PANTALÓN TIRO ALTO EN CORDURÓY  
VISTA BOLSILLO DELANTERO  
X2 EN TELA  
ESTÁNDAR PARA TODAS LAS TALLAS



18

PANTALÓN TIRO ALTO EN CORDUROY  
BOLSILLO DELANTERO  
X2 EN FORRO  
ESTÁNDAR PARA TODAS LAS TALLAS

  
**NOCTURNO**  
DESIGN BLOG

PANTALÓN TRO ALTO EN CORDUROY  
PRETINA  
X2 EN TELA





19

NOCTURNO  
DESIGN  
BLOG

